

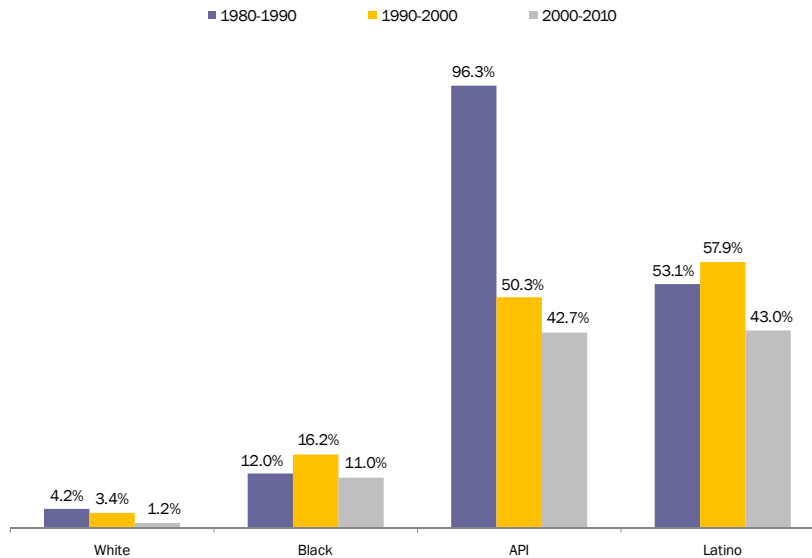


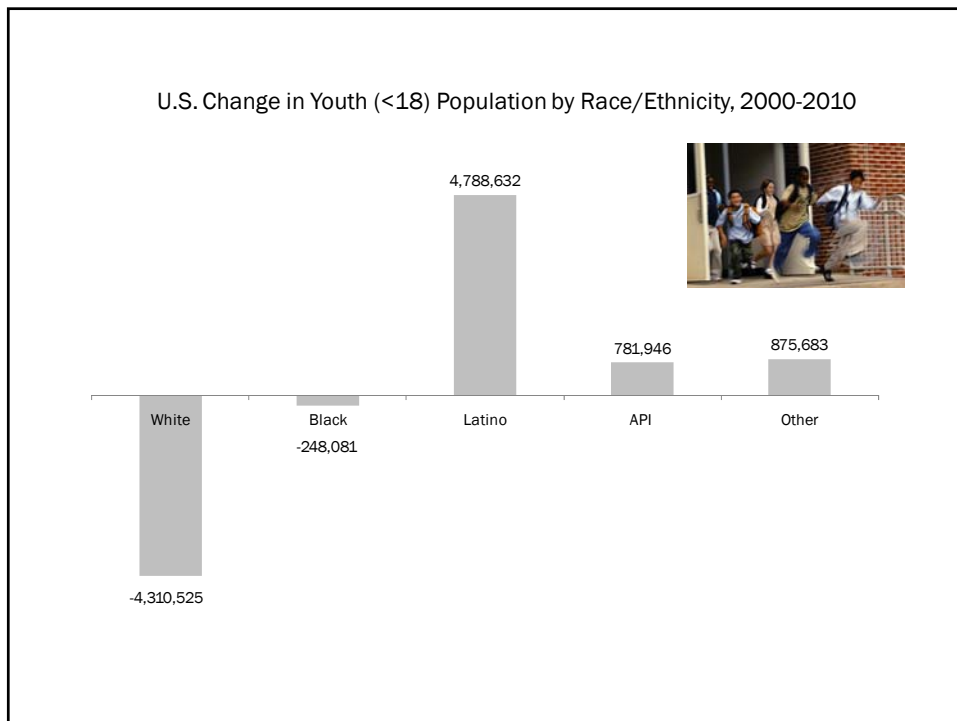
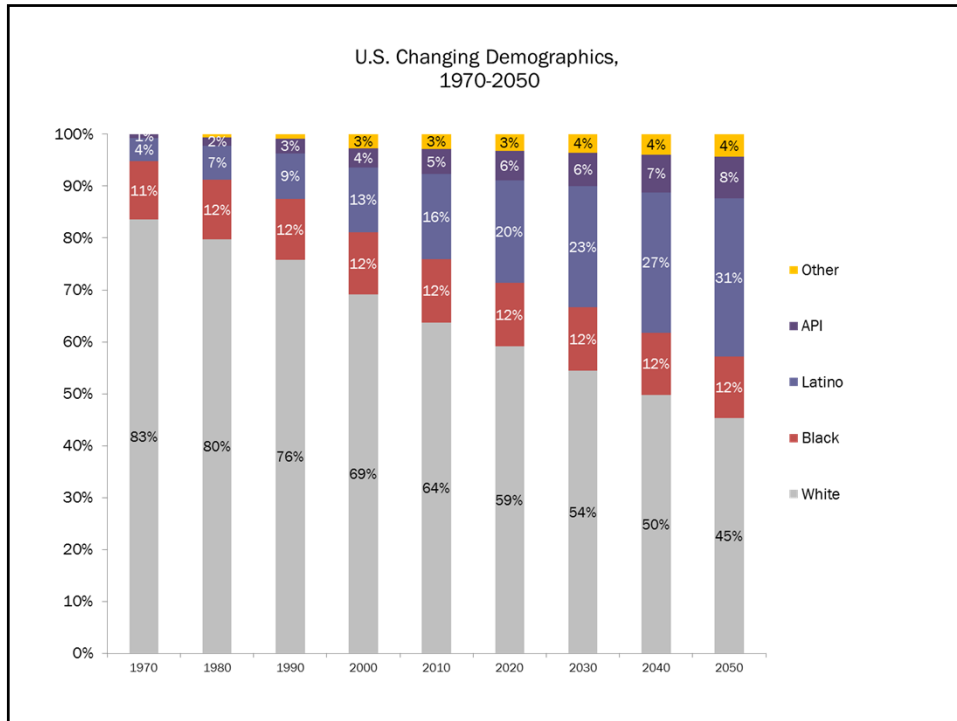
# LOOKING FORWARD DEMOGRAPHIC CHANGE, ECONOMIC UNCERTAINTY, & THE FUTURE OF THE GOLDEN STATE

10.12

MANUEL PASTOR

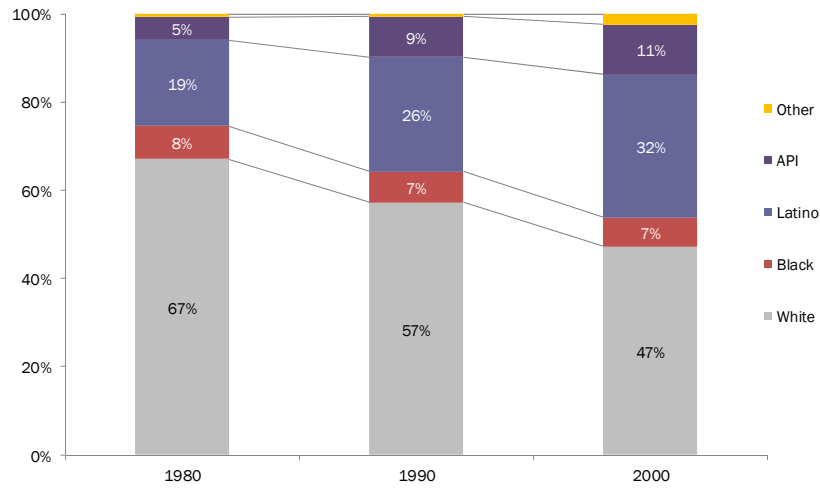
U.S. Decadal Growth Rates for Population by Race/Ethnicity, 1980-2010





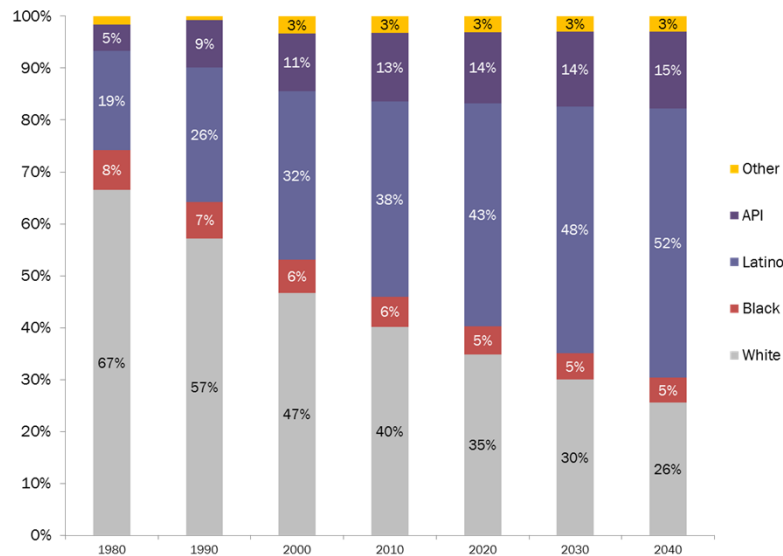
## LEADING THE NATIONAL TREND

### California's Changing Demographics, 1980-2000



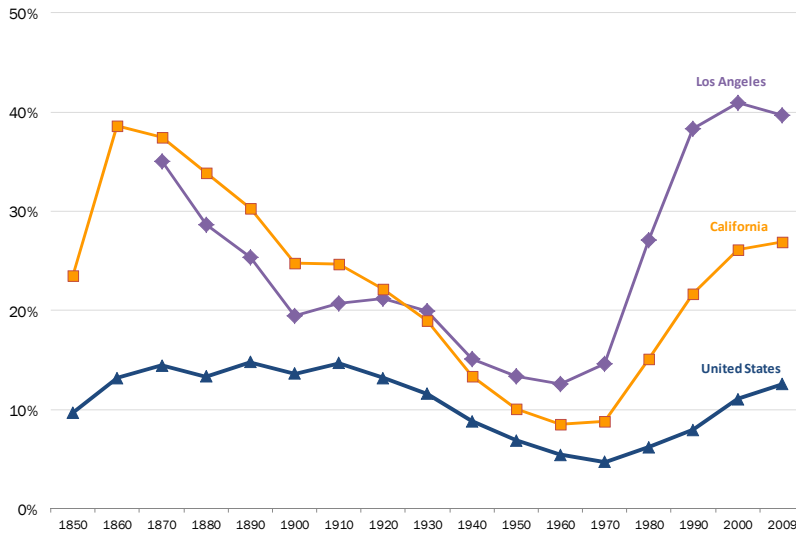
Source: California Department of Finance.

### California Changing Demographics, 1980-2040



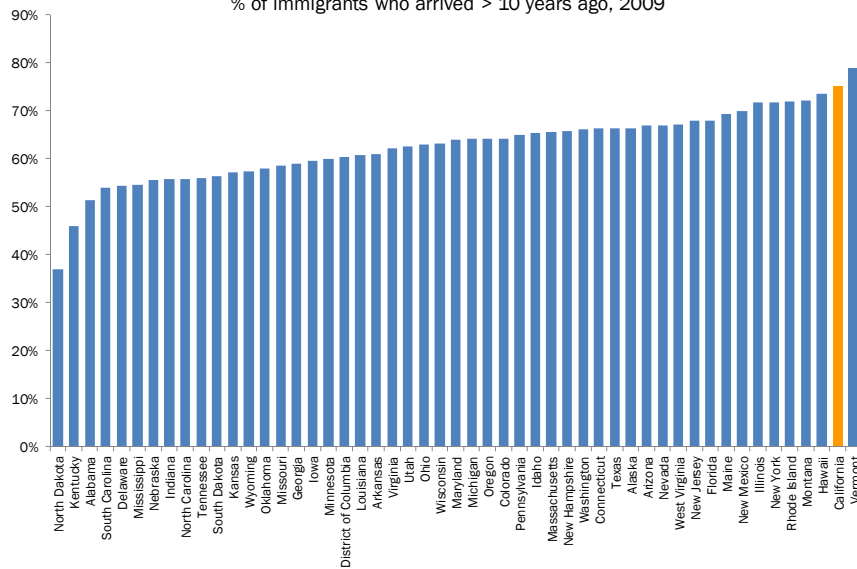
## IMMIGRATION AS A (NON-) FACTOR

A Leveling Off: Immigrant Share of Total Population  
California, Los Angeles, and the U.S.

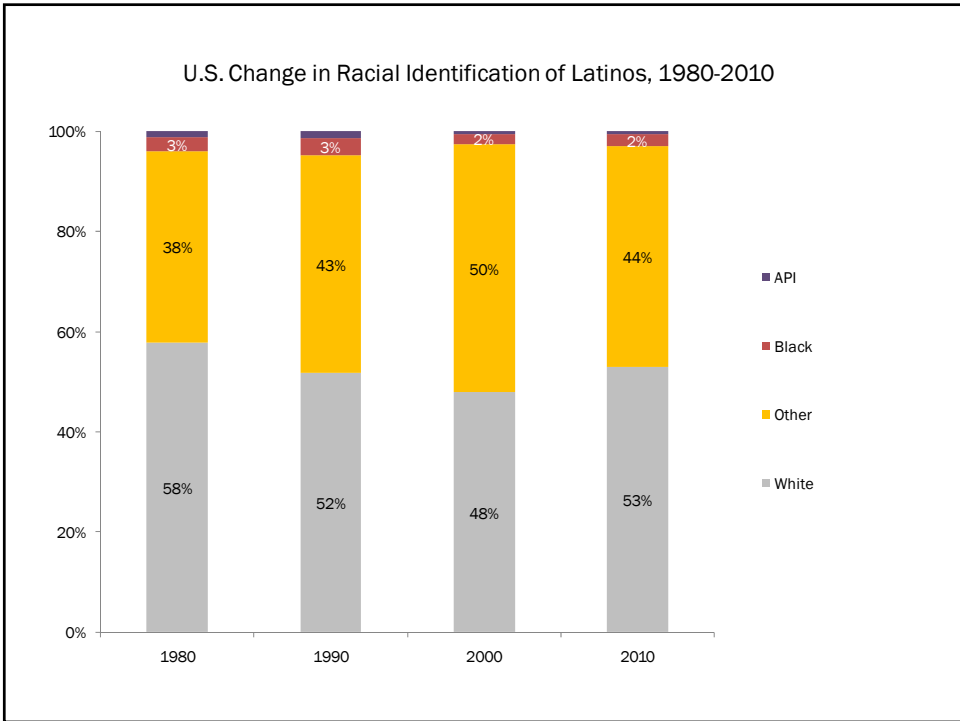
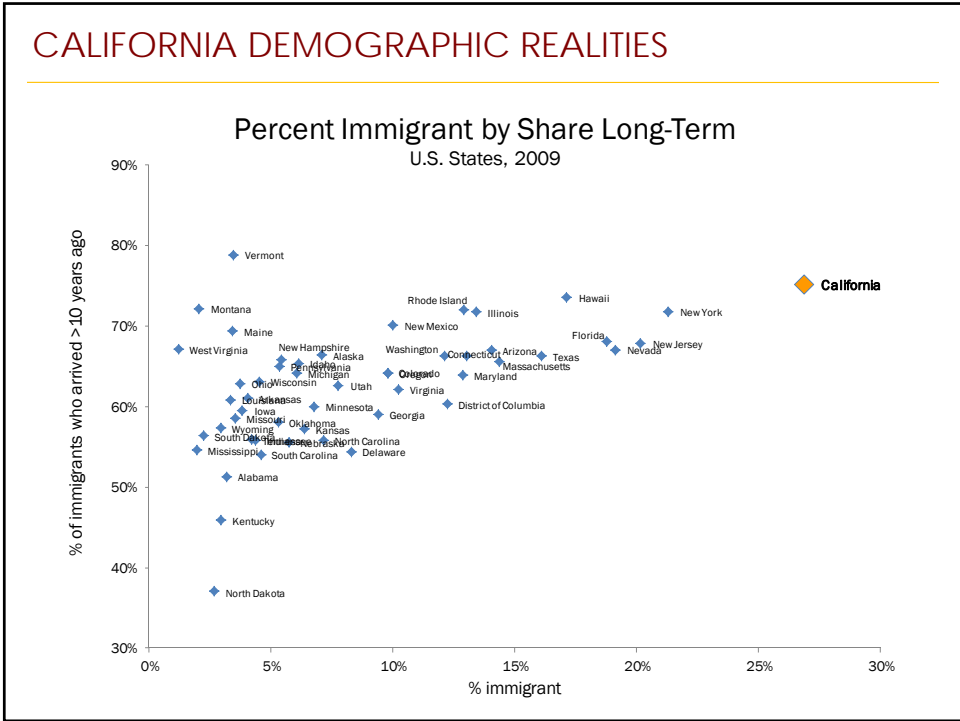


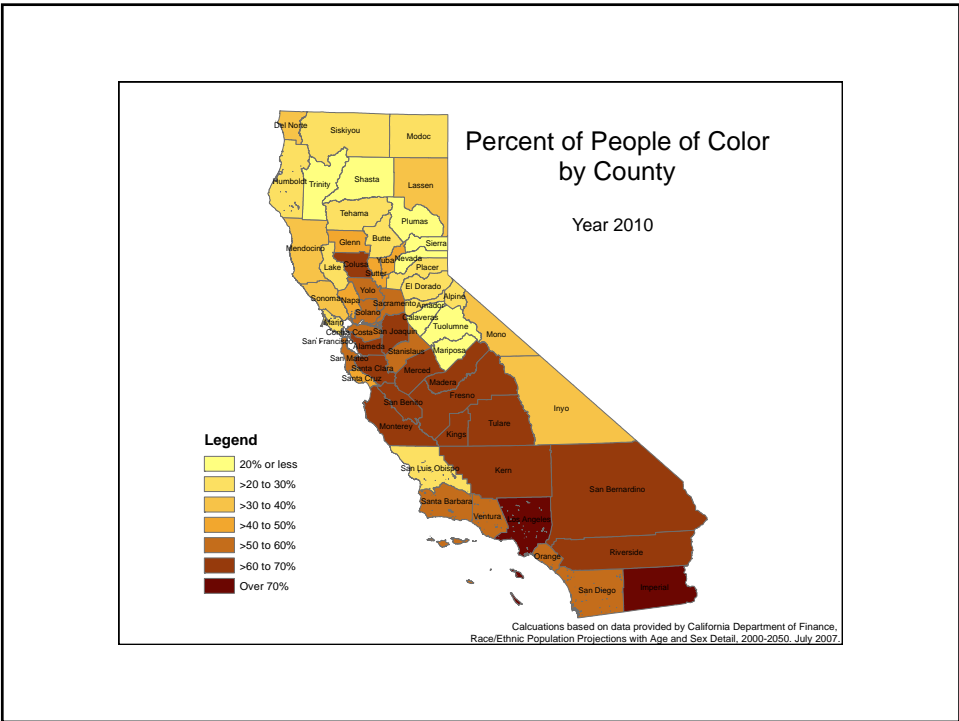
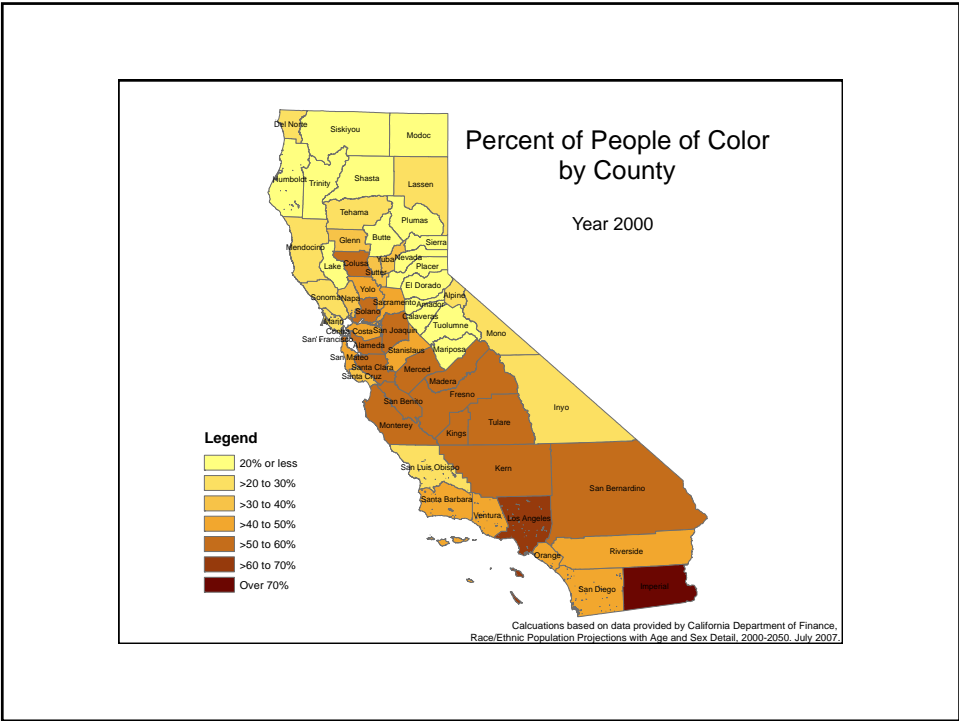
## CALIFORNIA DEMOGRAPHIC REALITIES

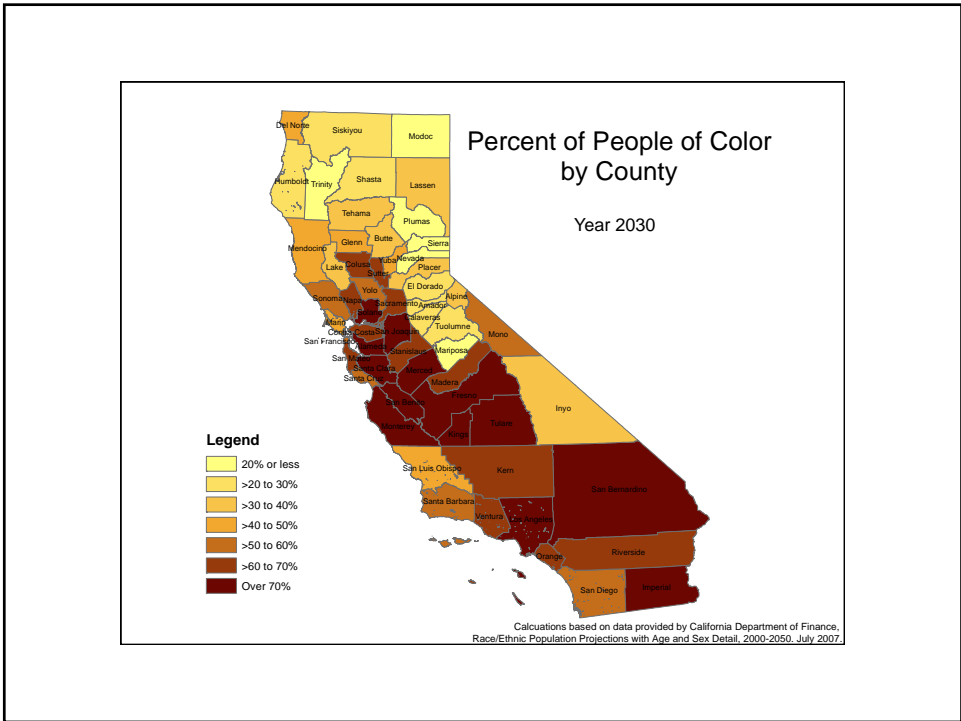
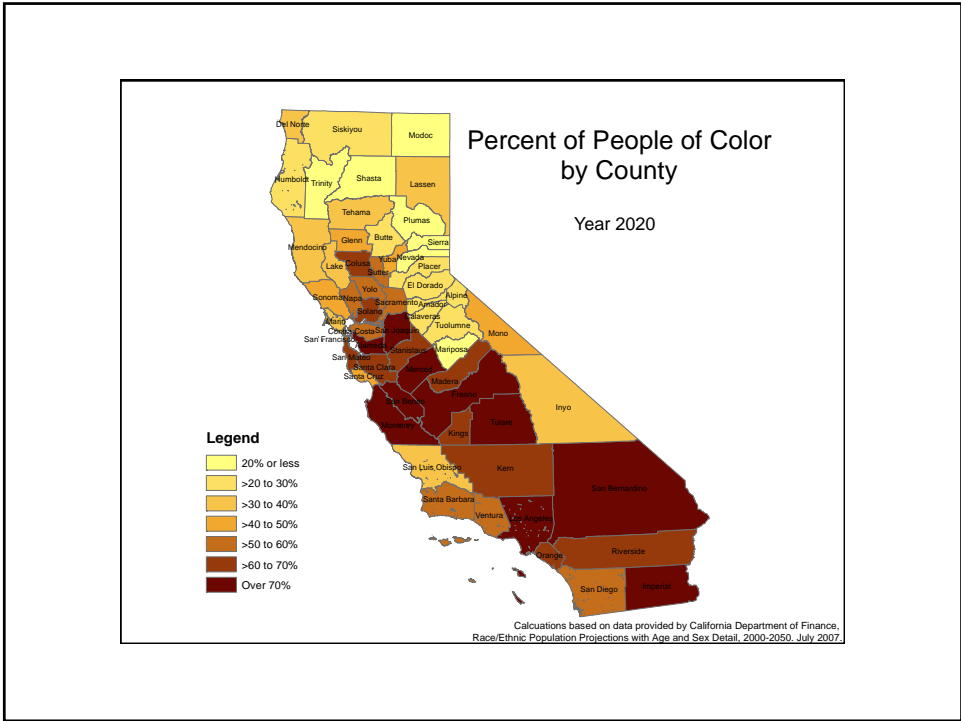
California: Among the Most Long-Term of Immigrant Populations  
% of immigrants who arrived > 10 years ago, 2009

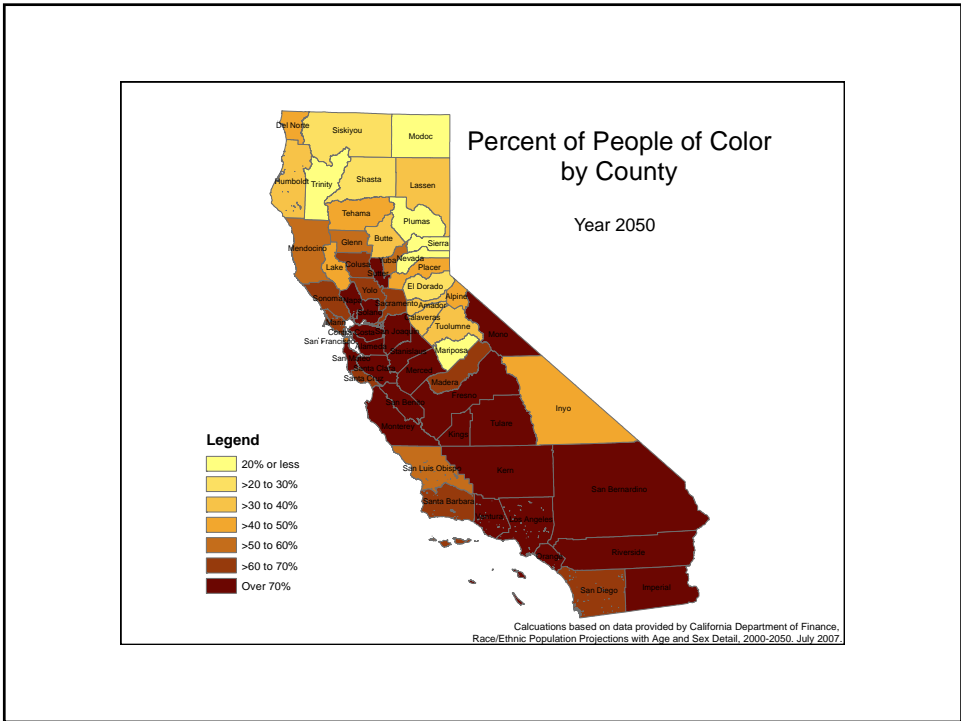
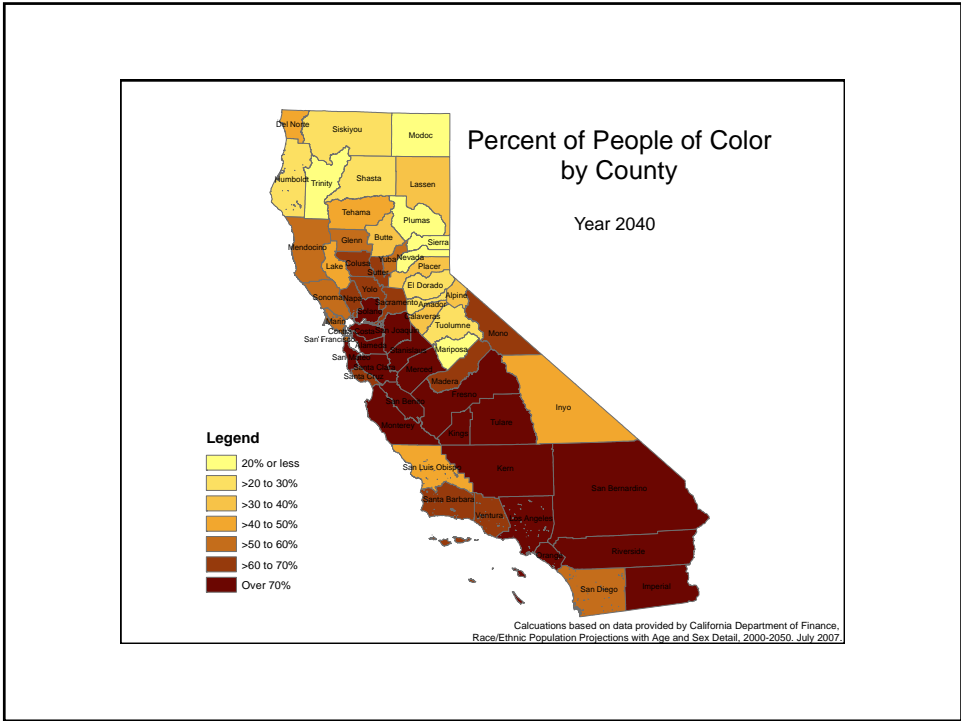


## CALIFORNIA DEMOGRAPHIC REALITIES

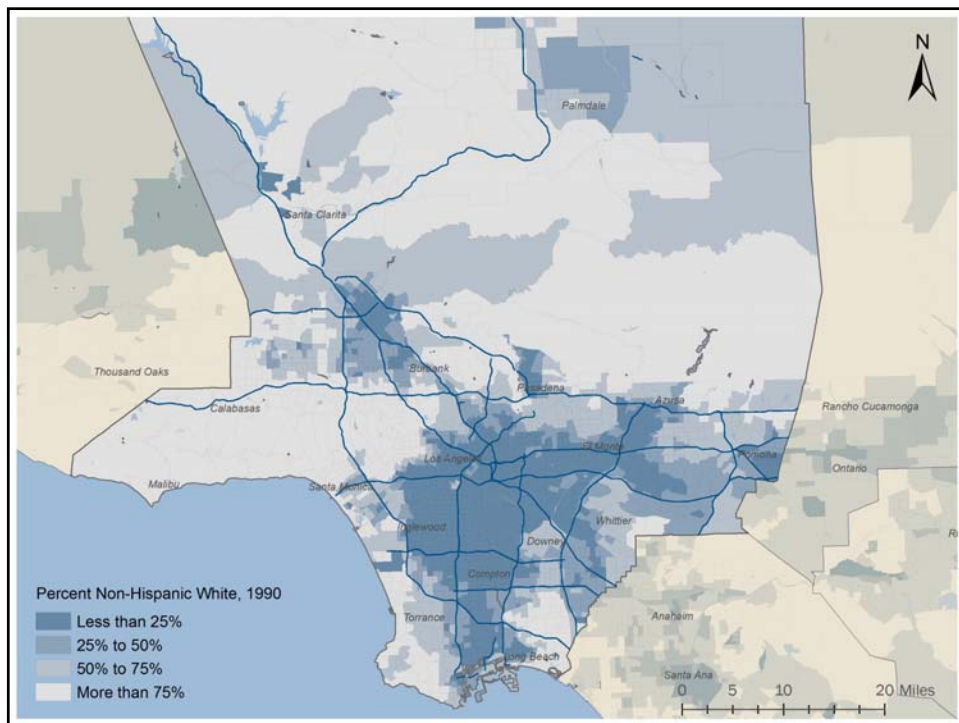
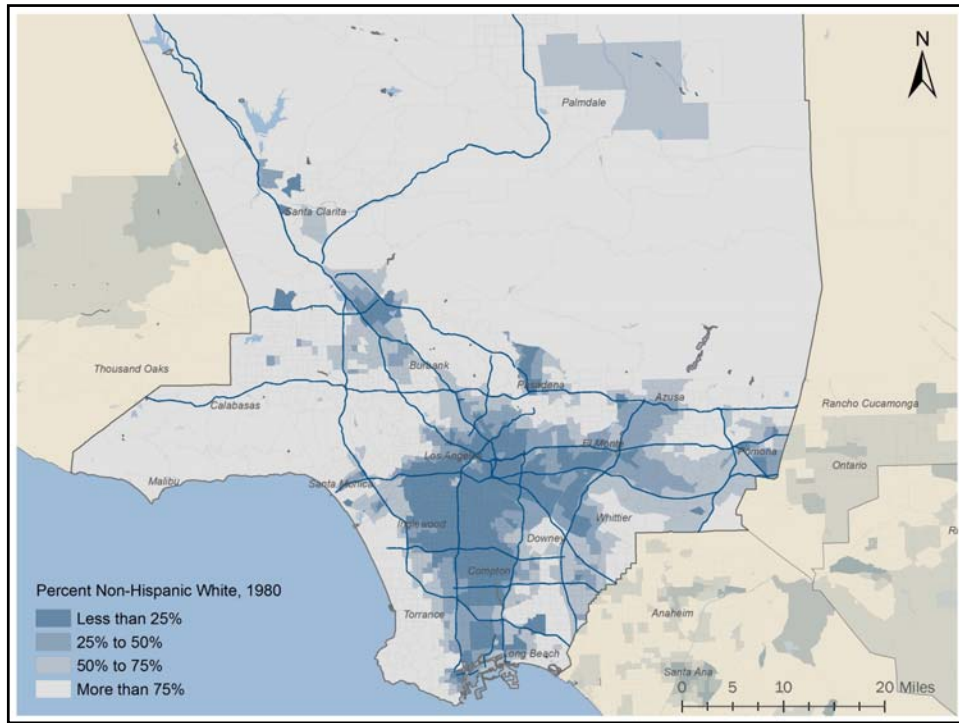


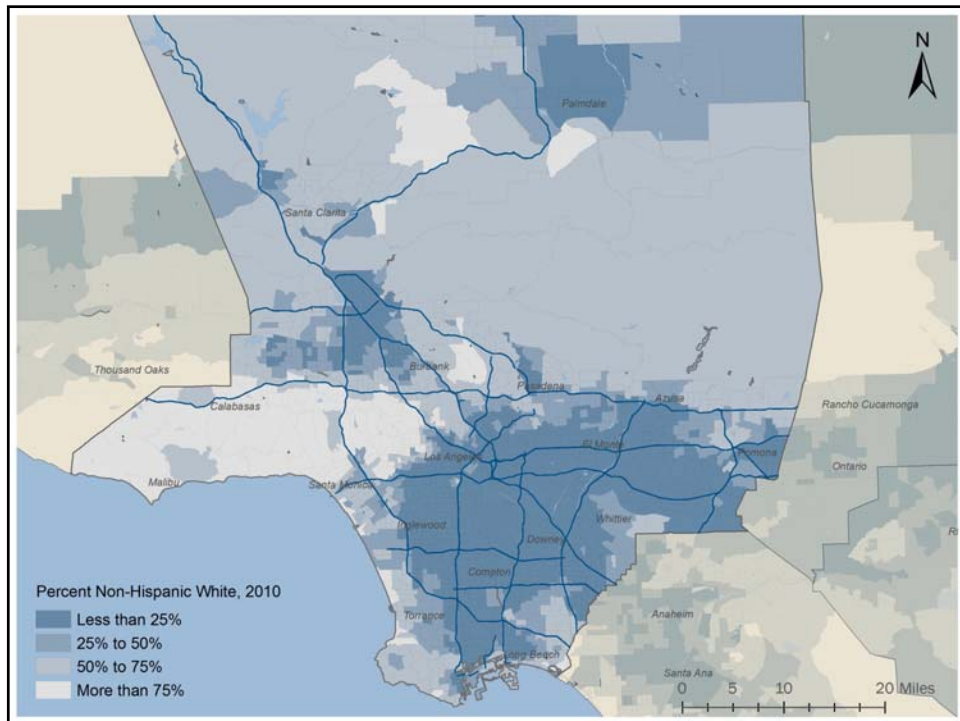
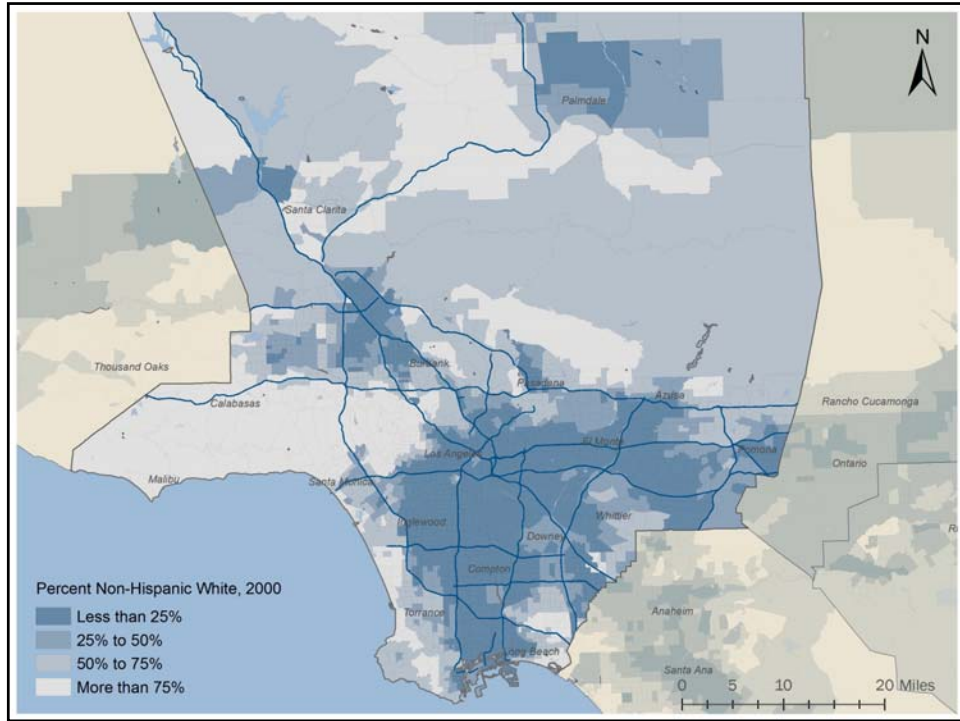


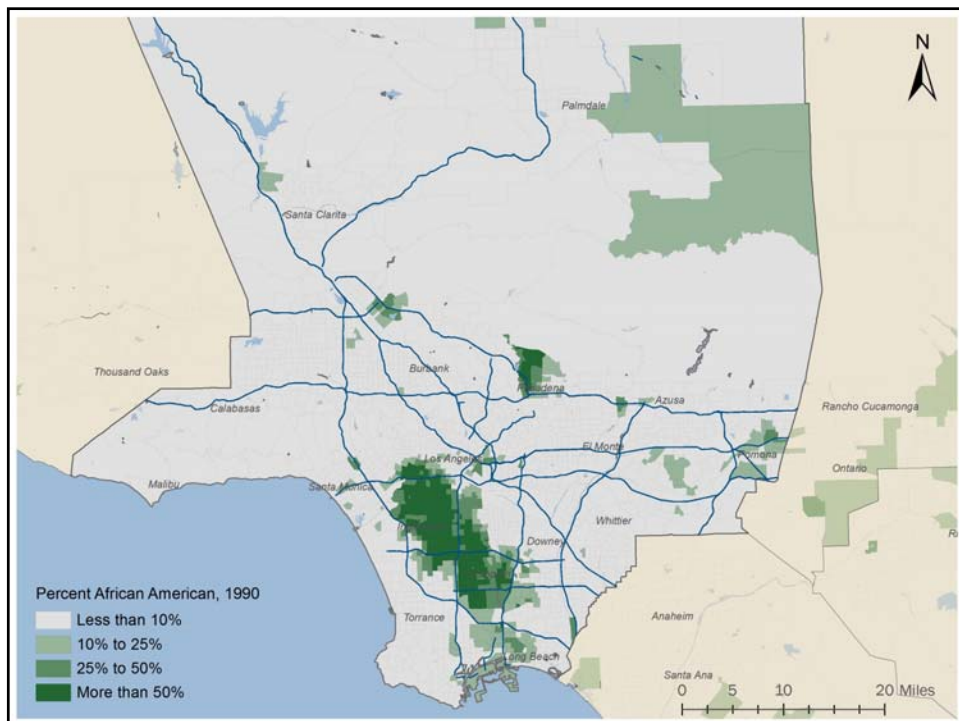
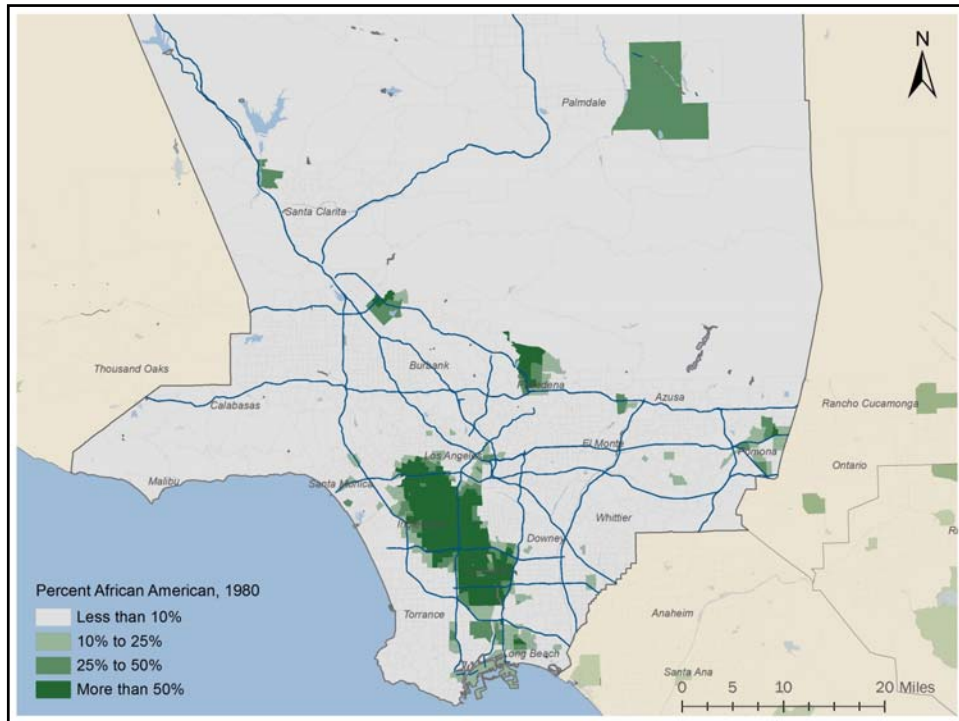


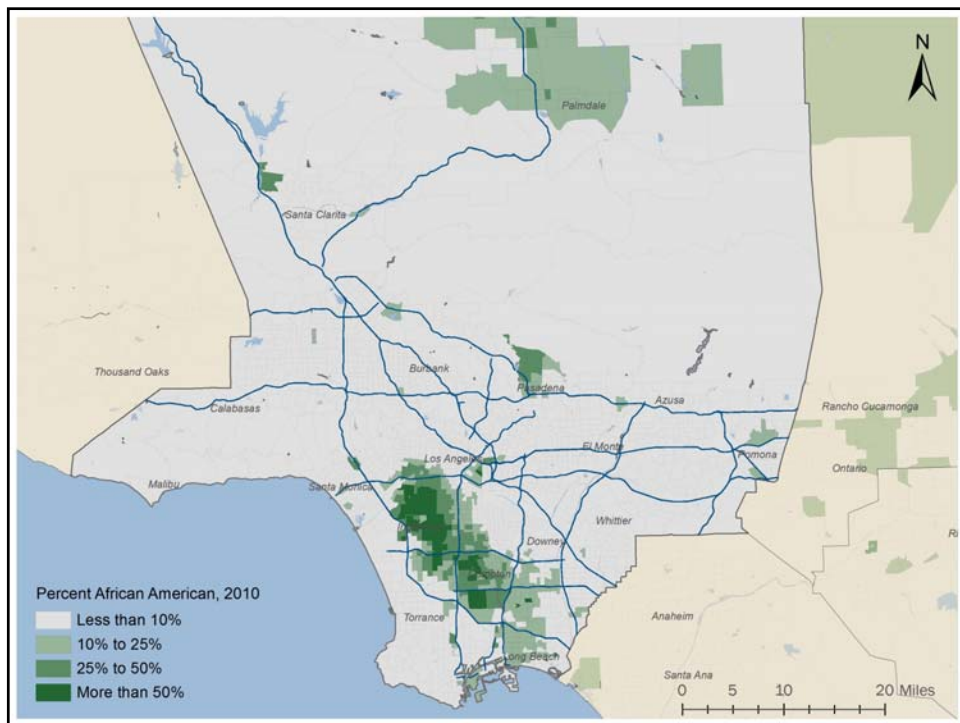
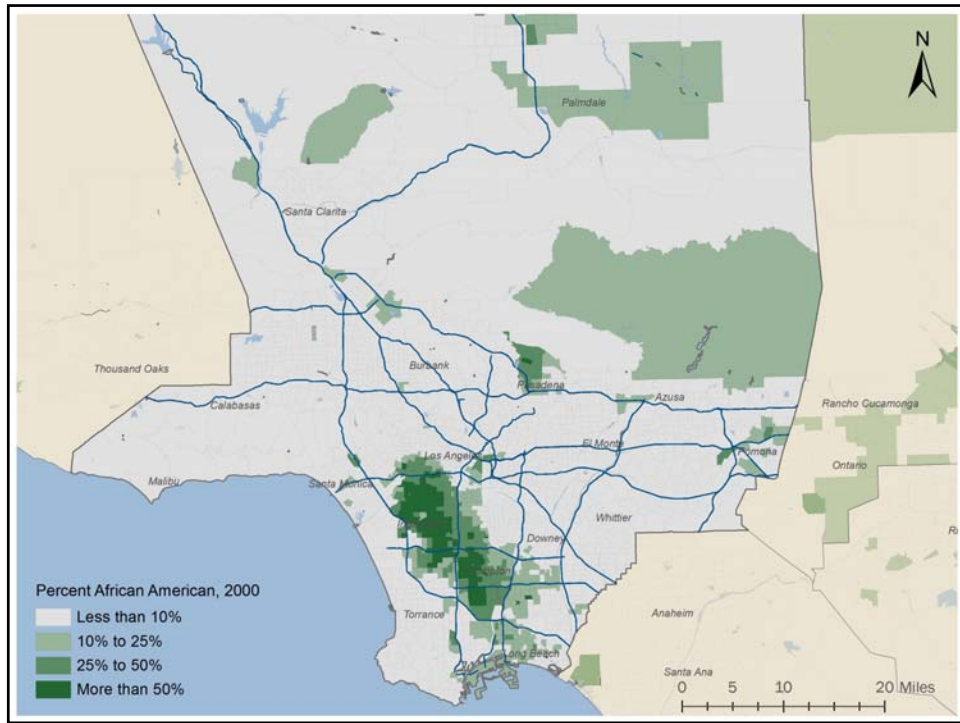


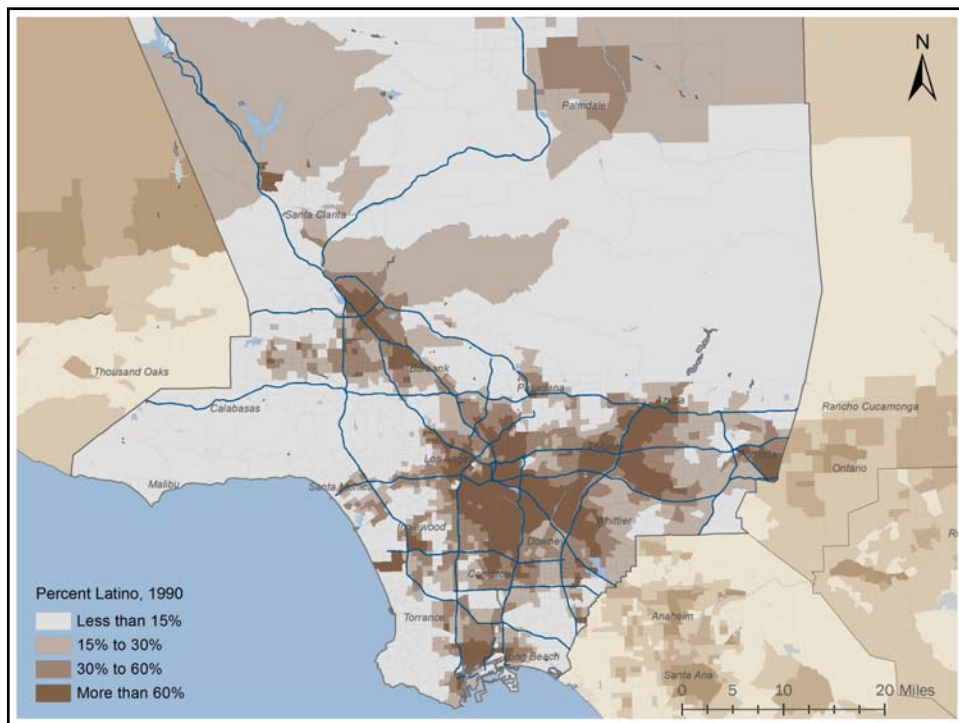
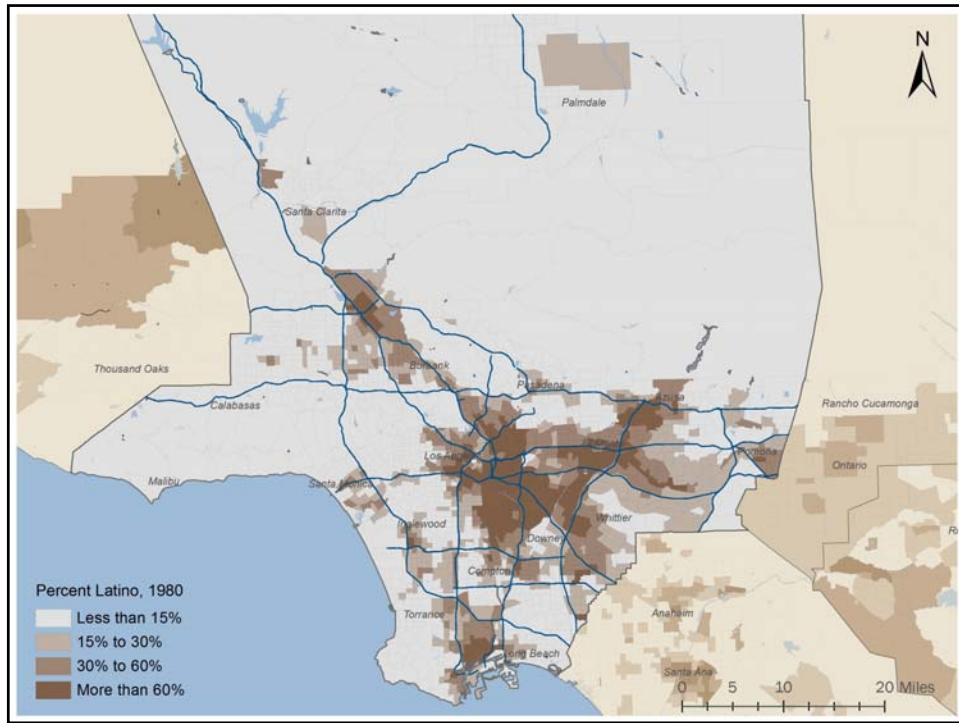


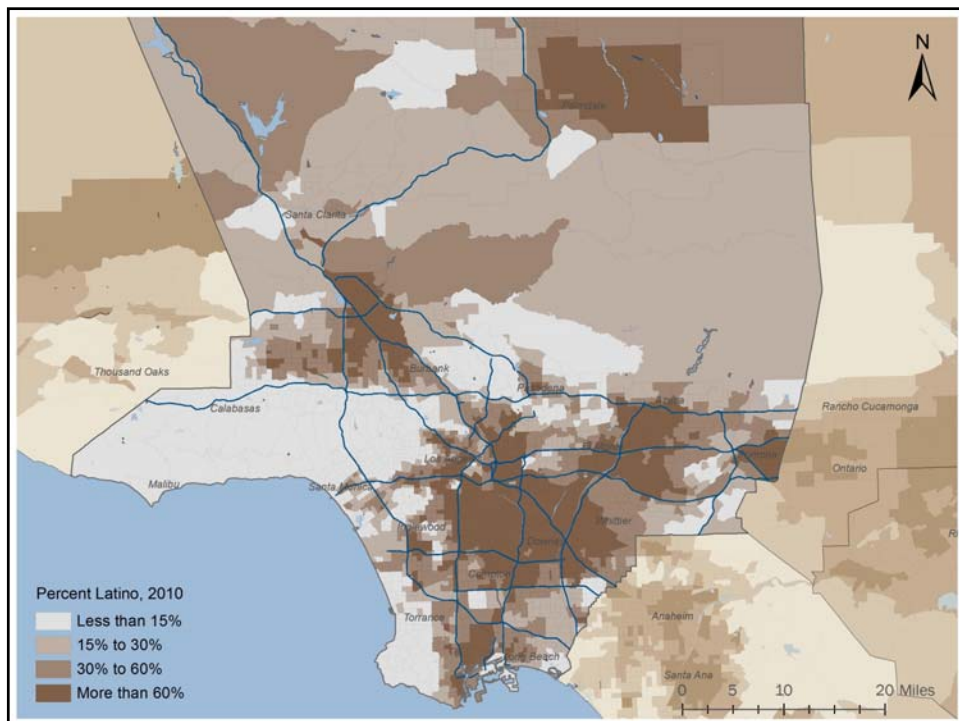
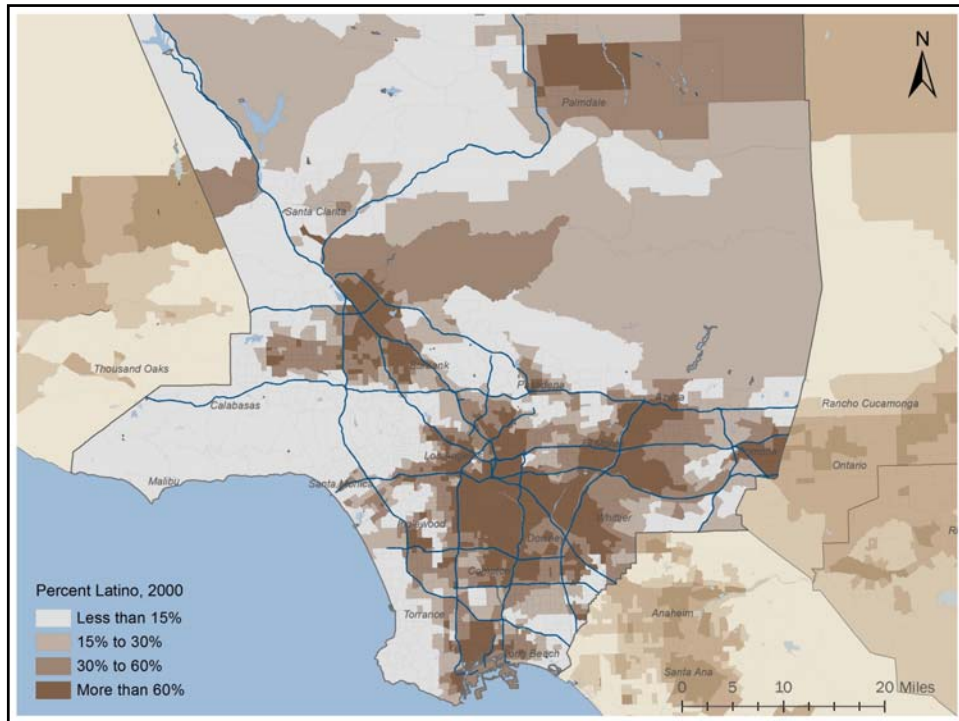


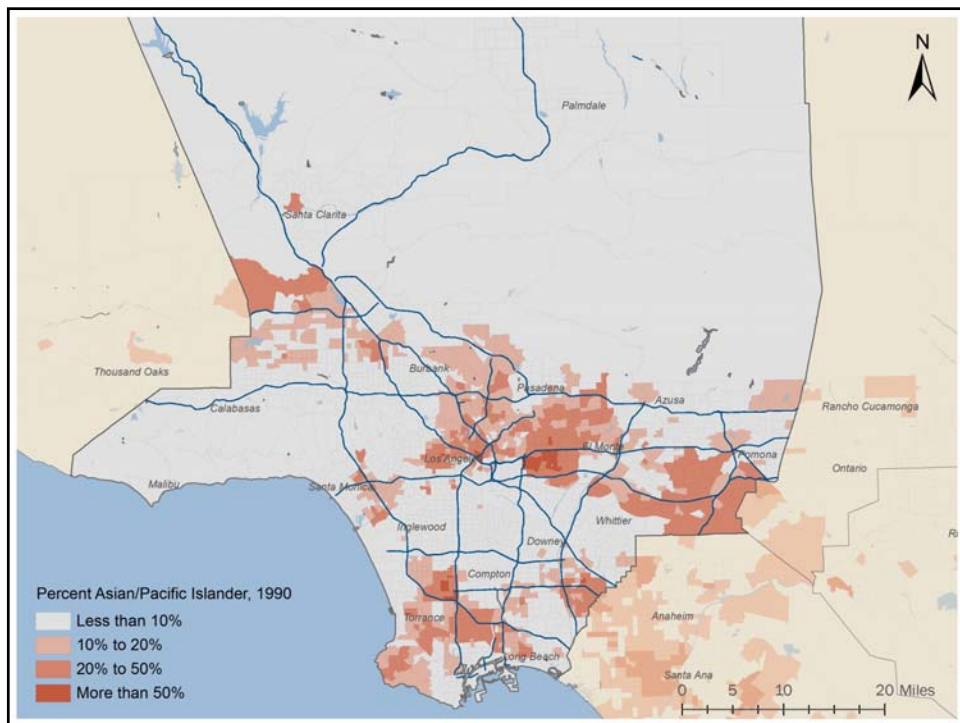
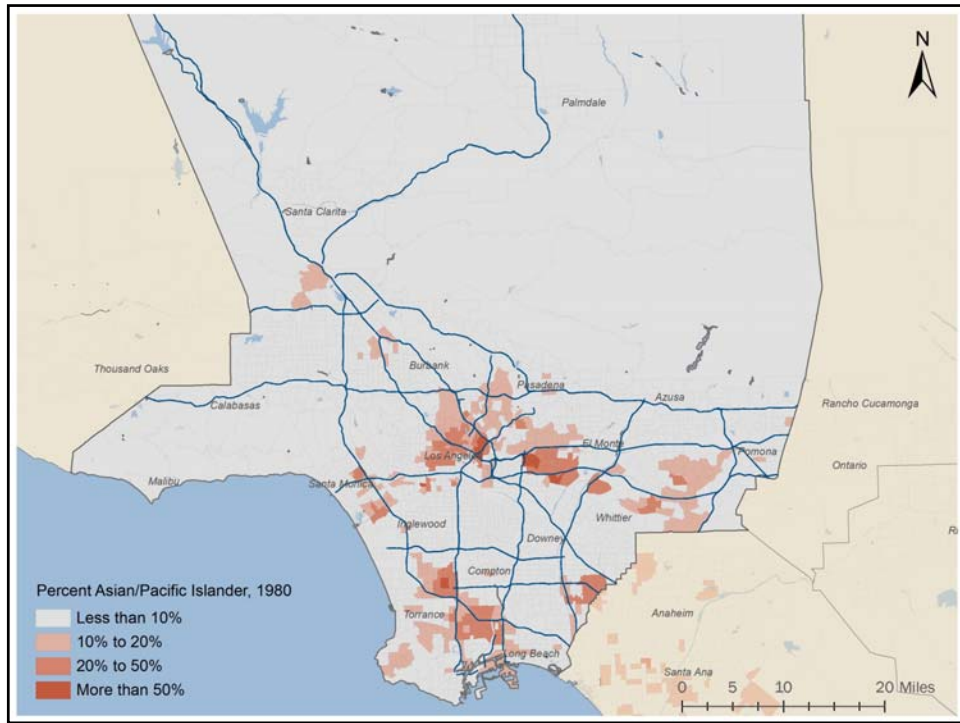


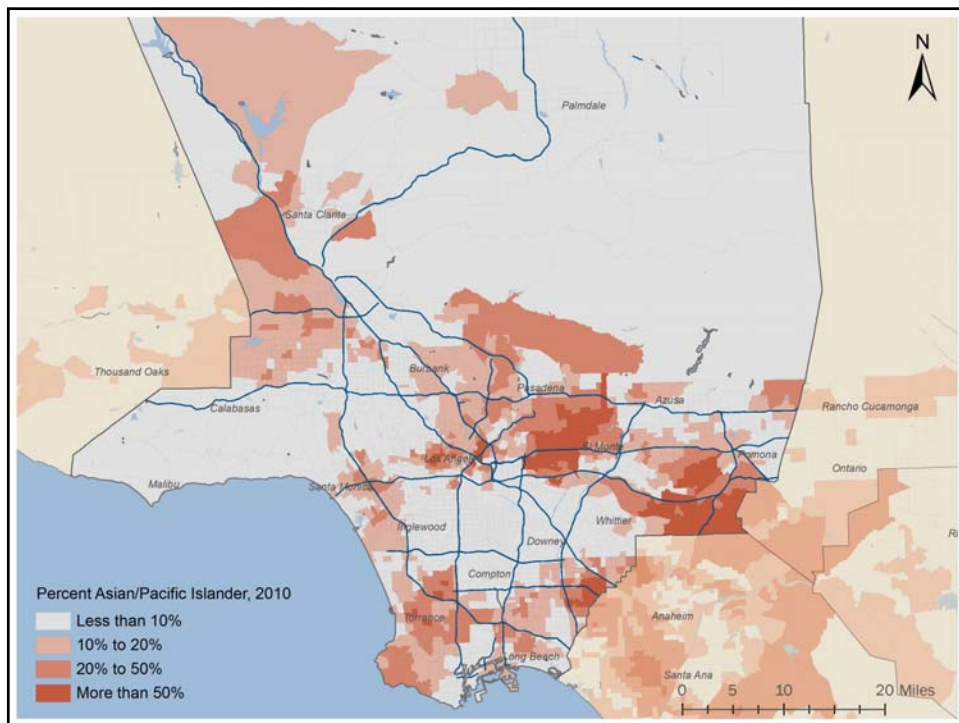
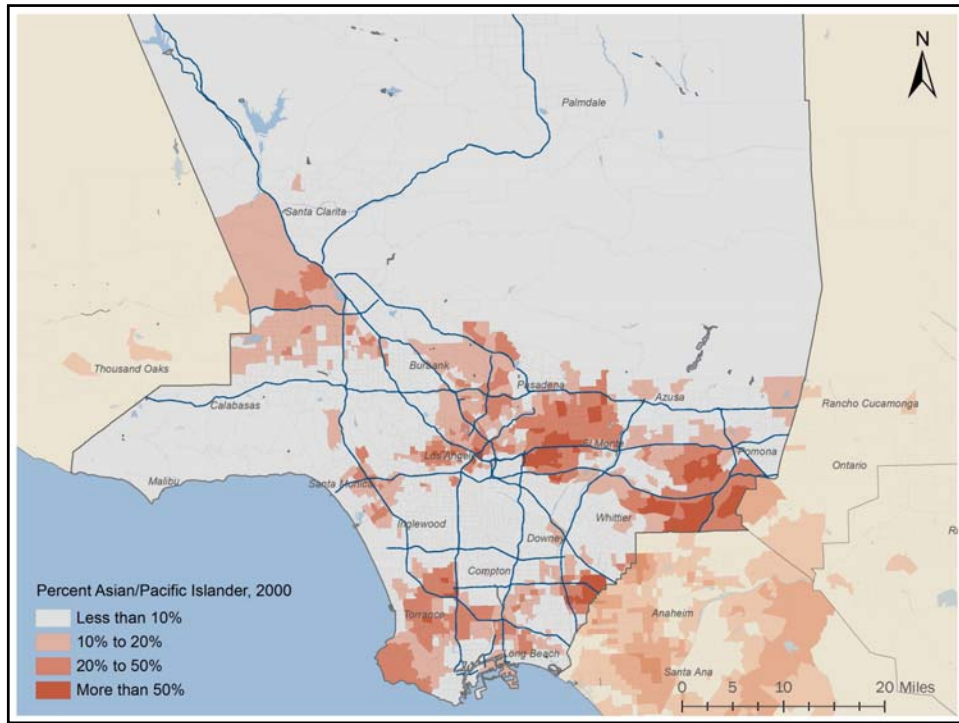




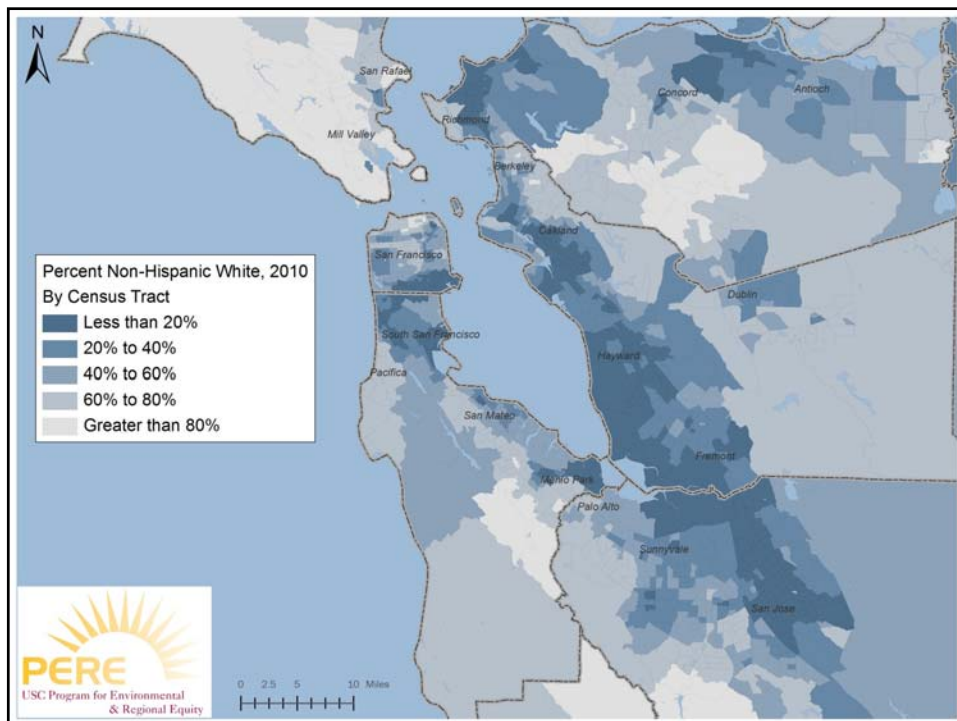
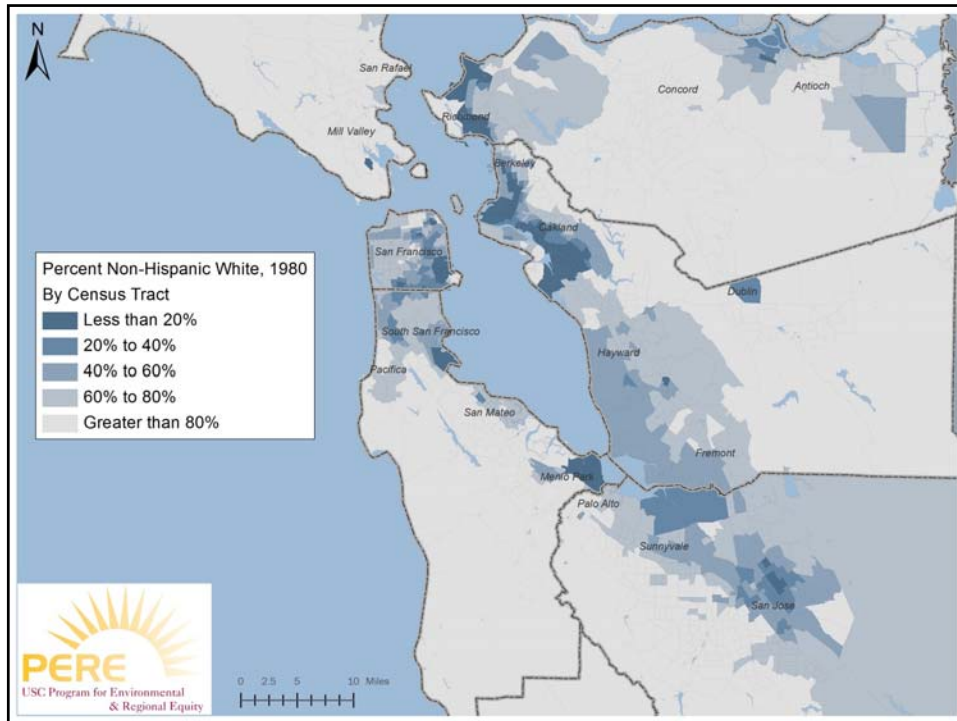


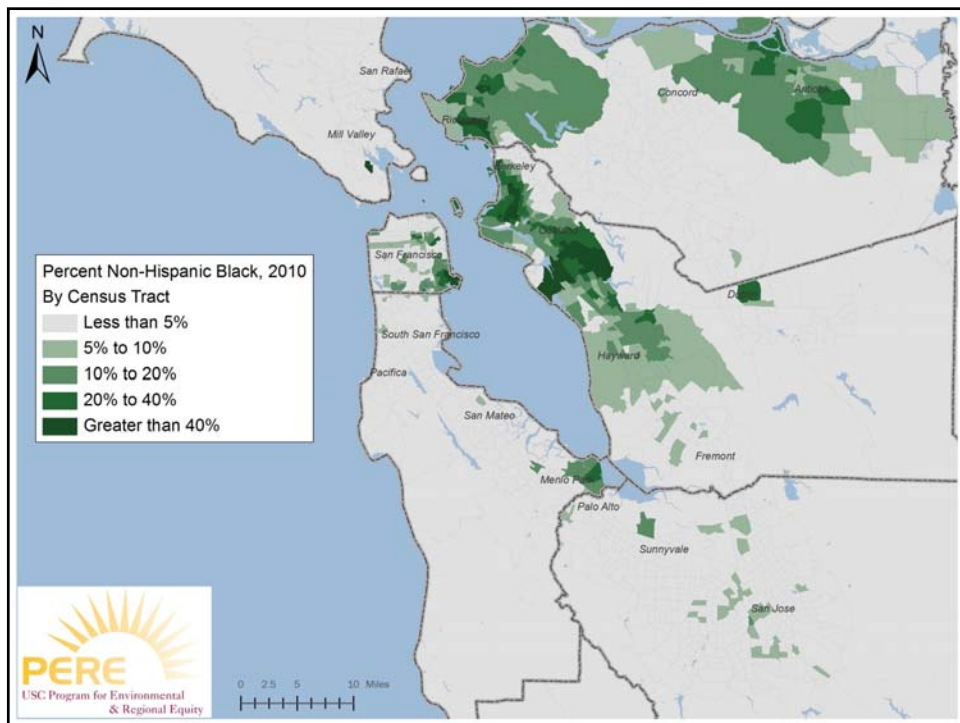
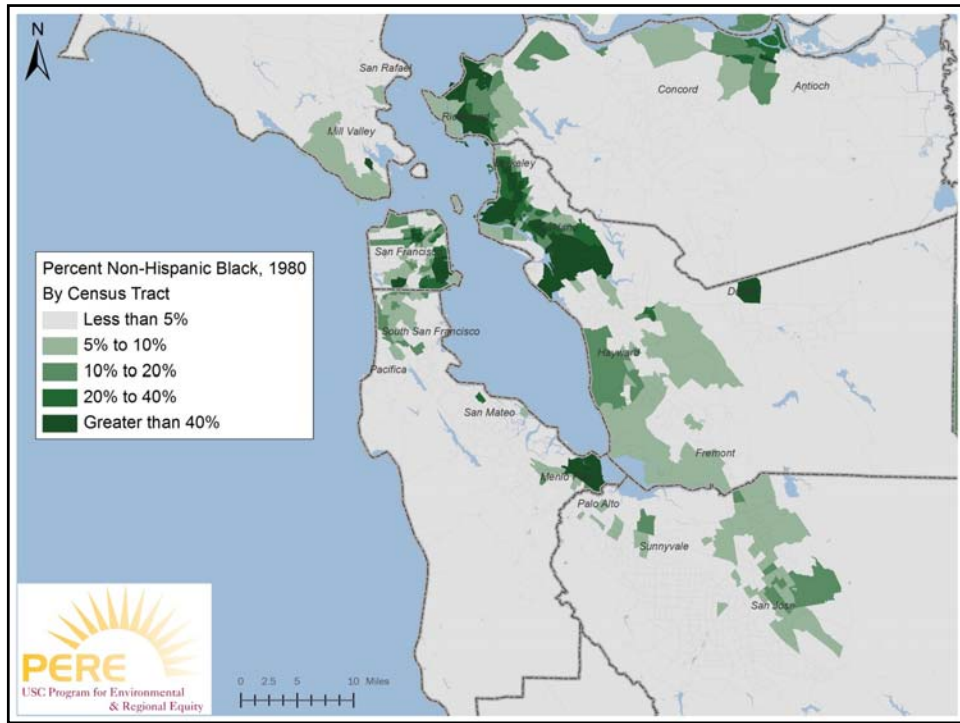


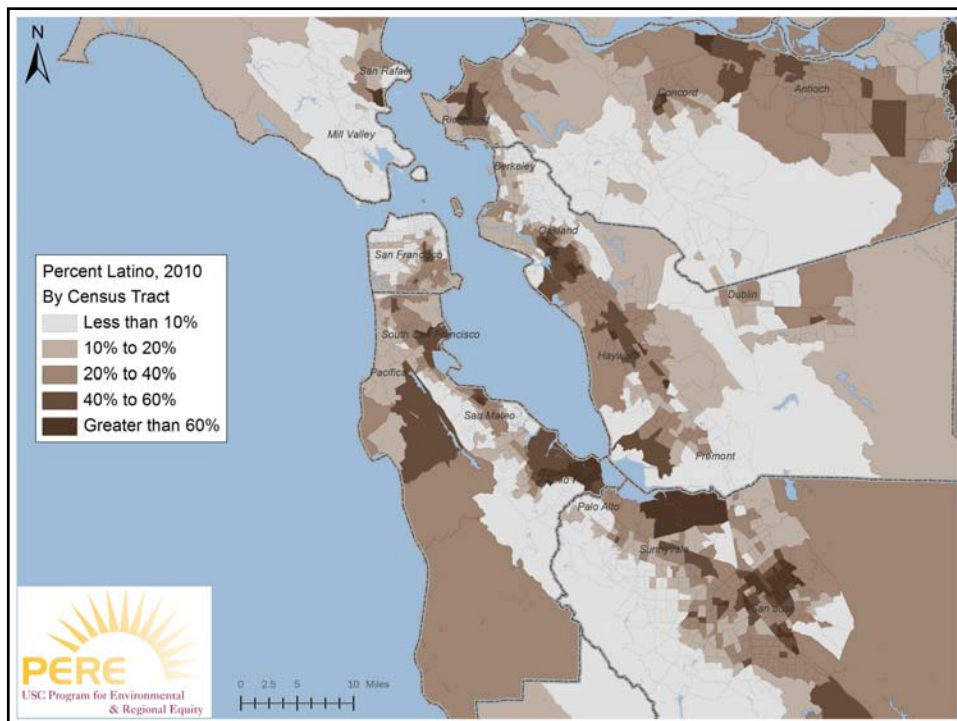
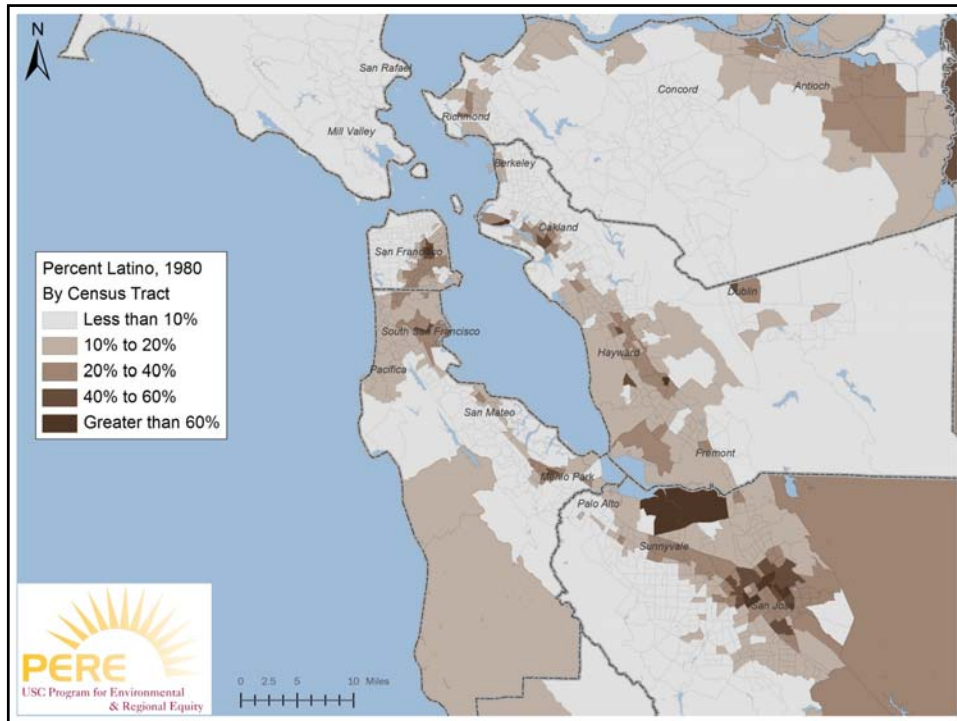


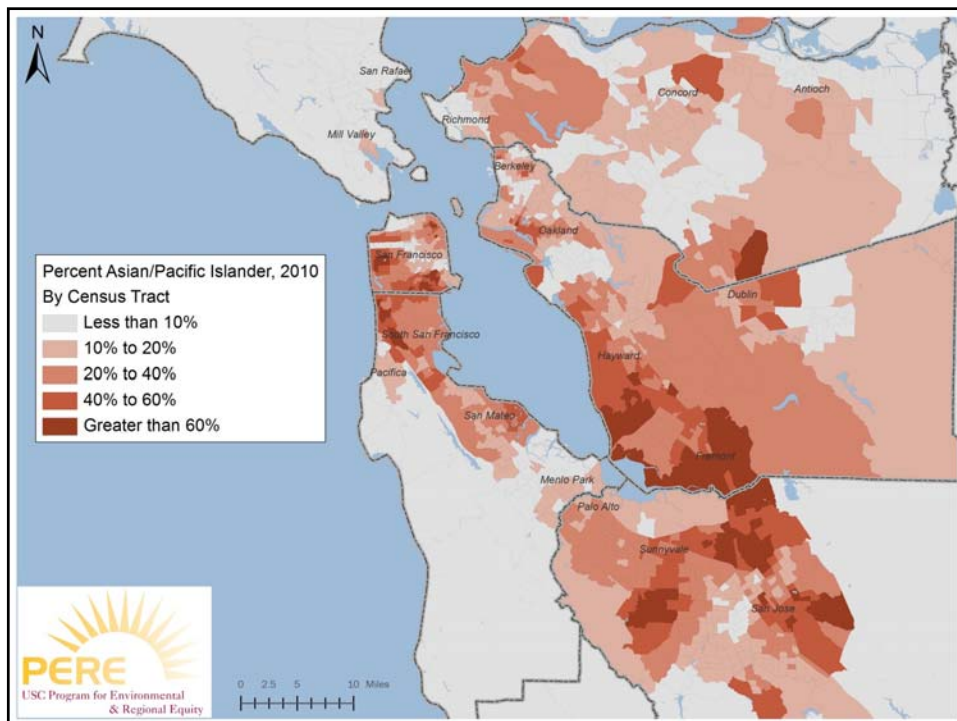
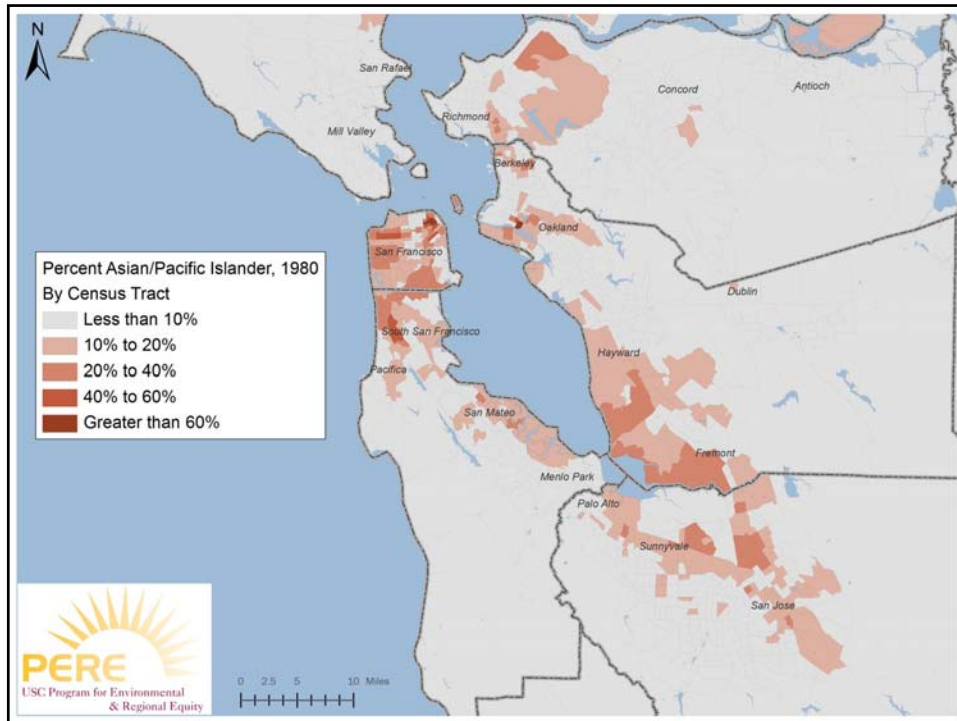


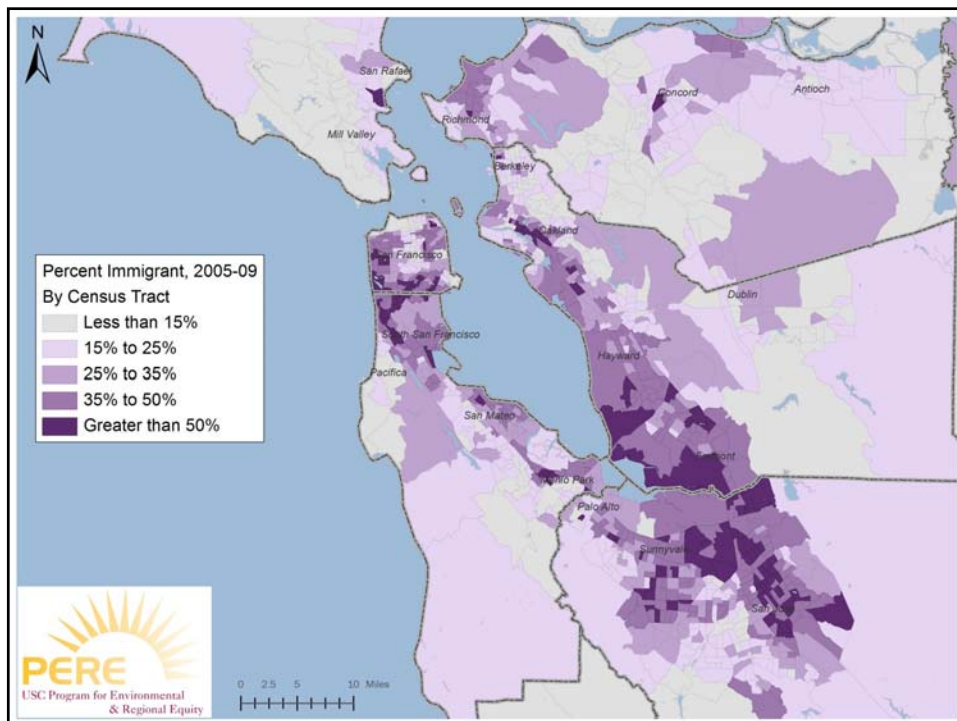
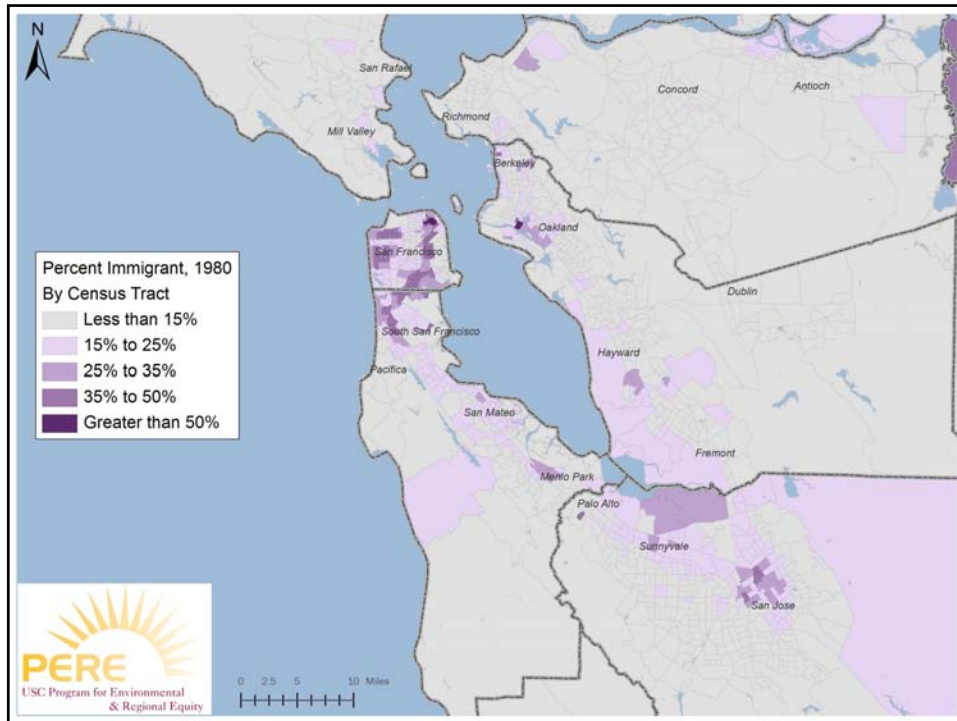








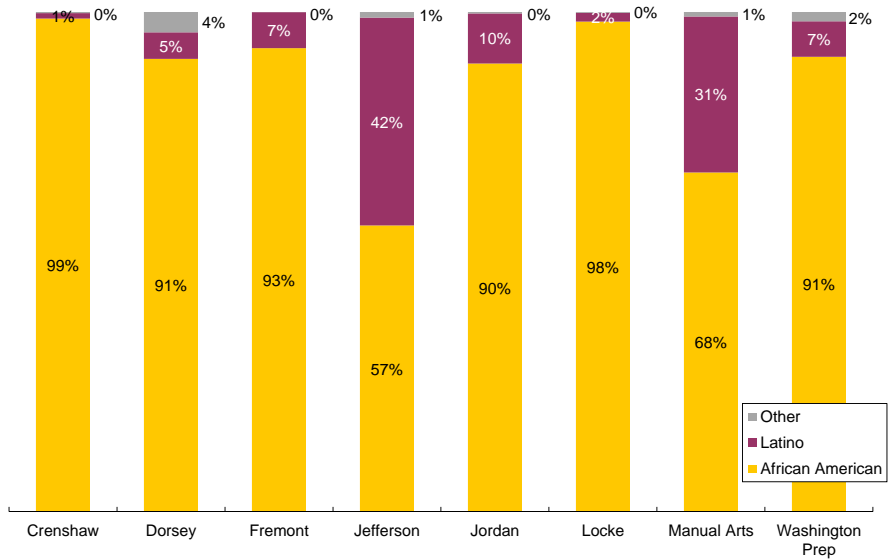


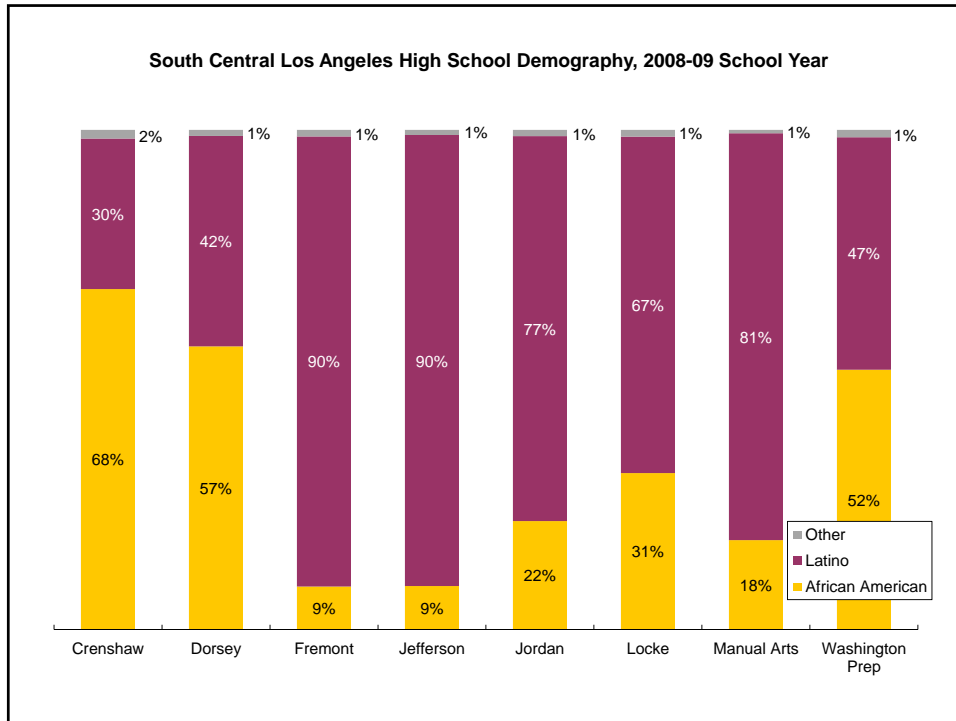


### South Los Angeles with 2000 U.S. Census Tract Boundaries



South Central Los Angeles High School Demography, 1981-82 School Year



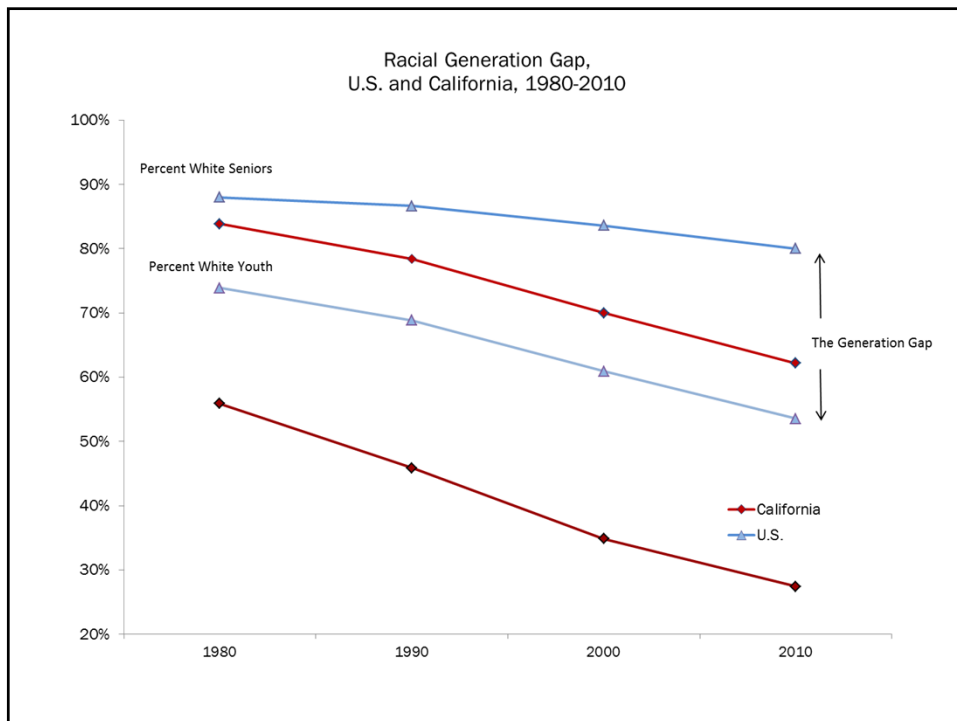
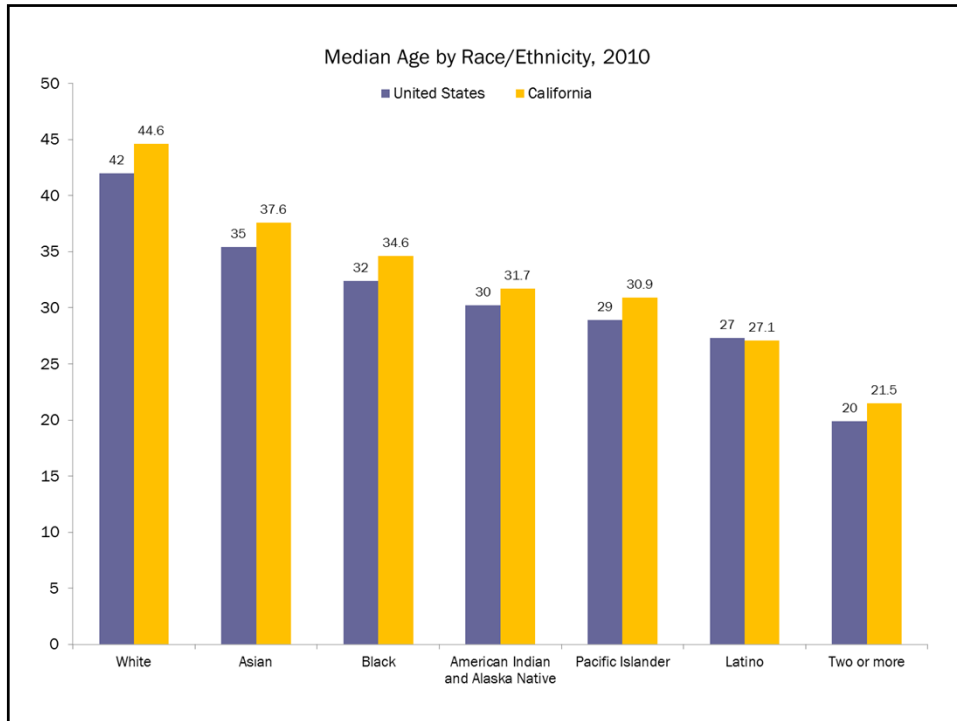


## A CRITICAL ALLIANCE

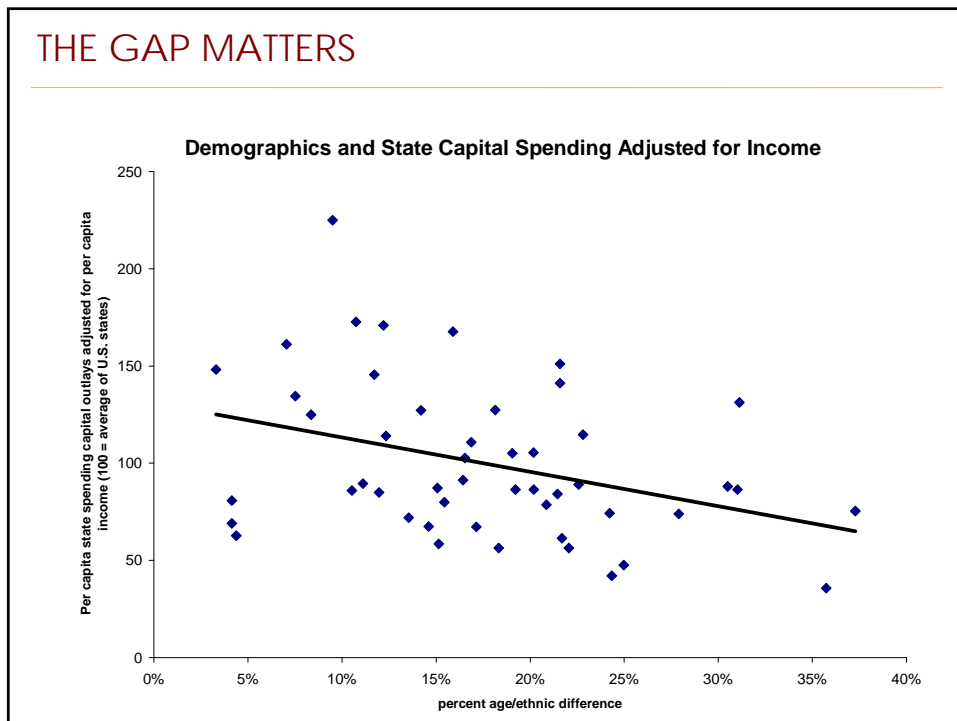
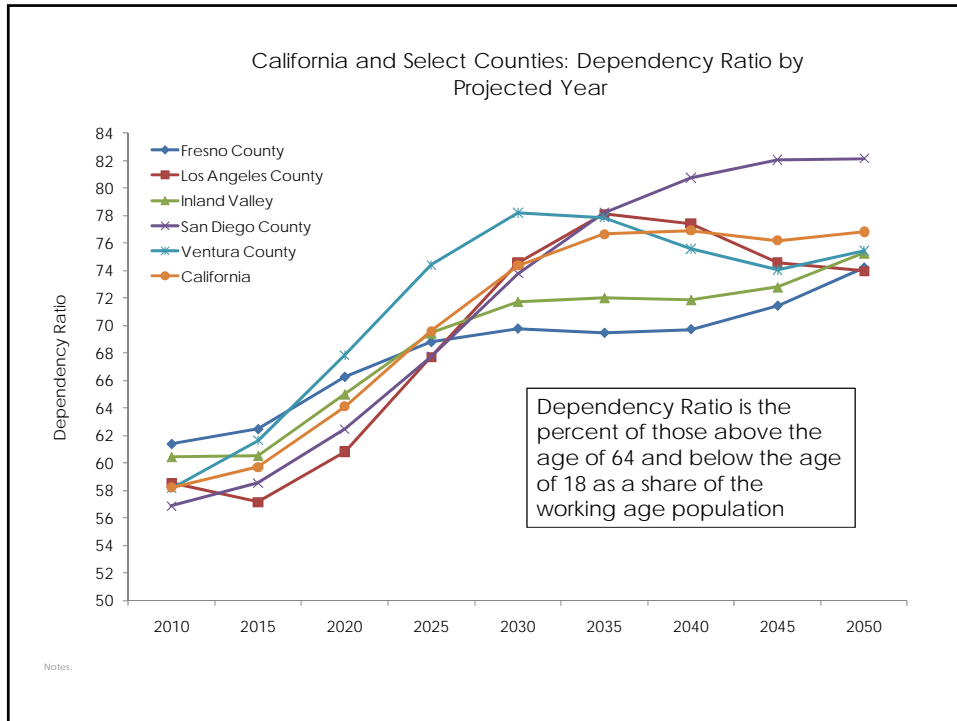
All Together Now?

African Americans, Immigrants and the Future of California

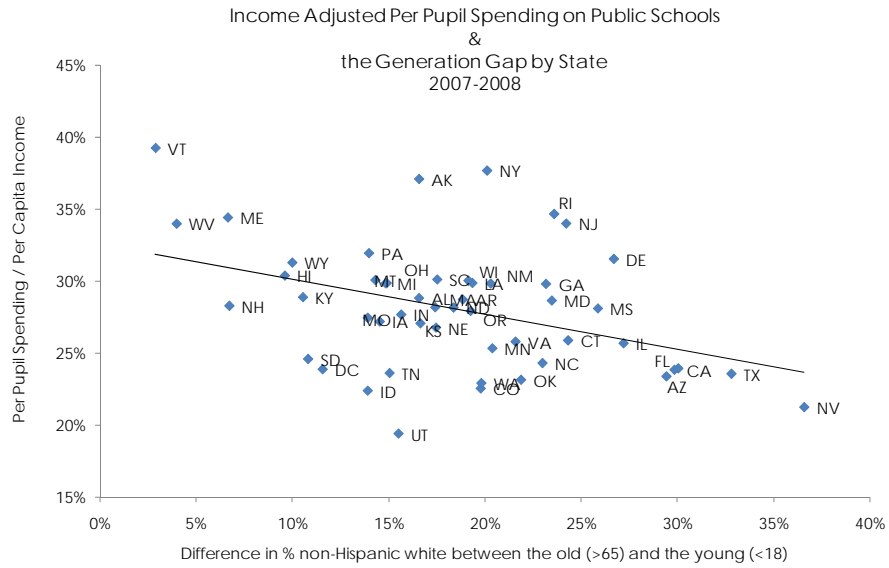
Manual Pastor  
 Juan De Lara  
 Justin Scoggins





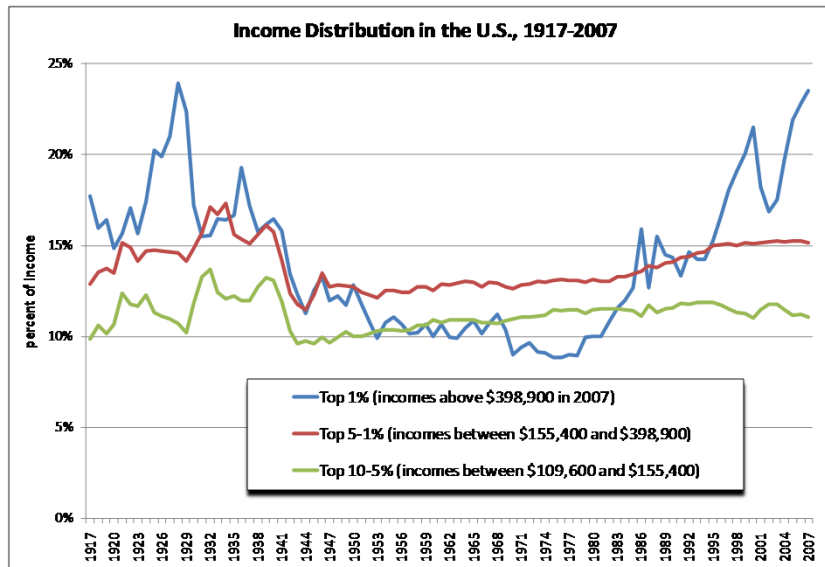


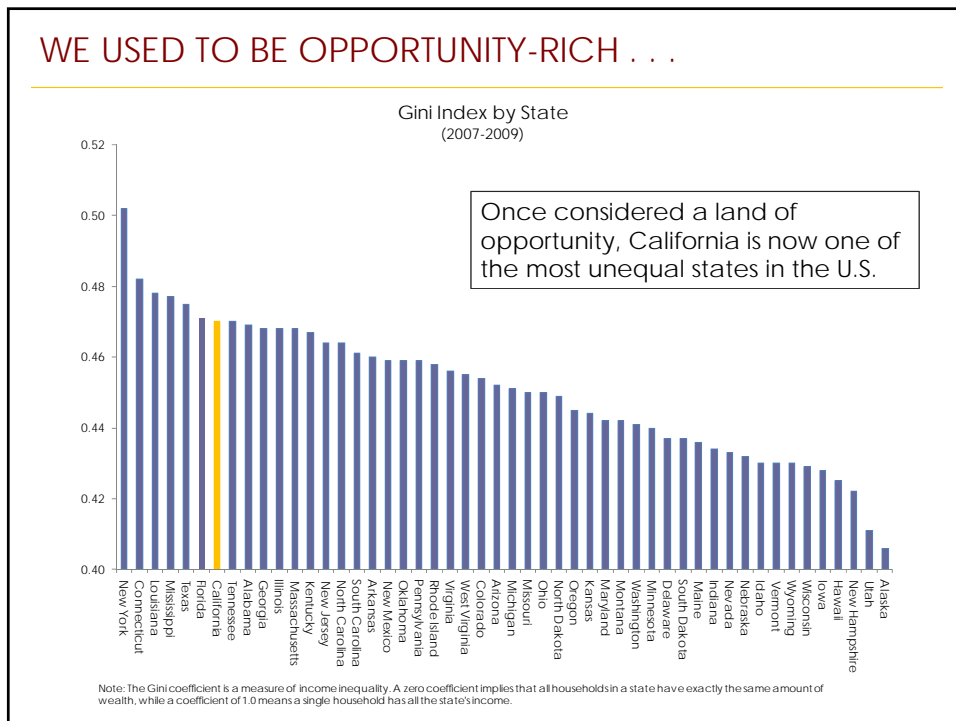
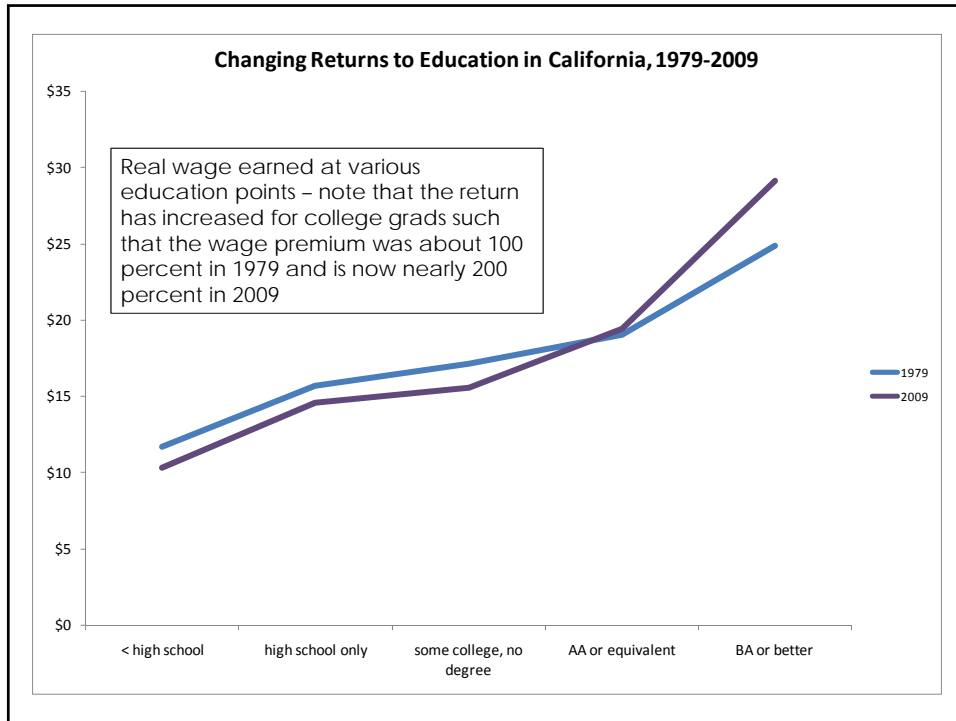
## THE GAP MATTERS



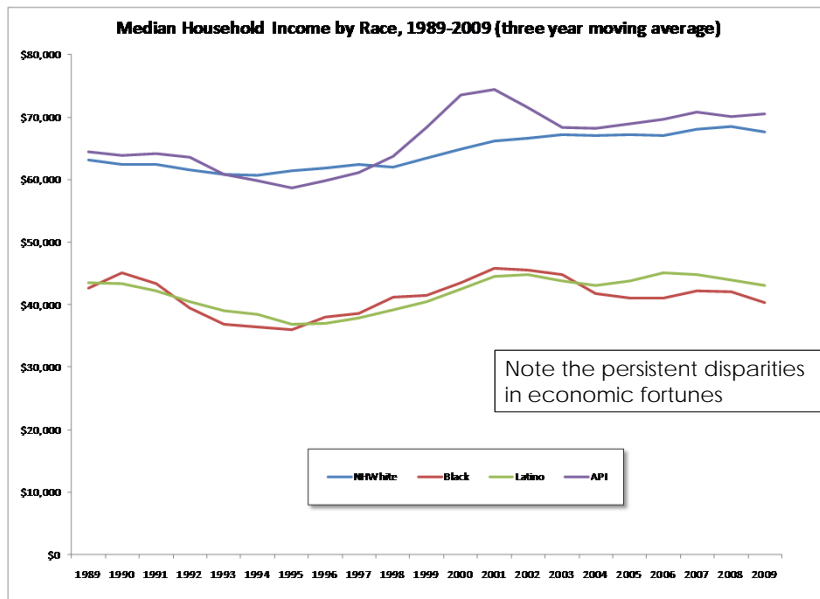
Source: PolicyInk/PERE analysis of data from the U.S. Census Bureau and the Integrated Public Use Microdata Series (IPUMS) Current Population Survey (CPS) March Supplement.

## THE CHALLENGE OF INEQUALITY



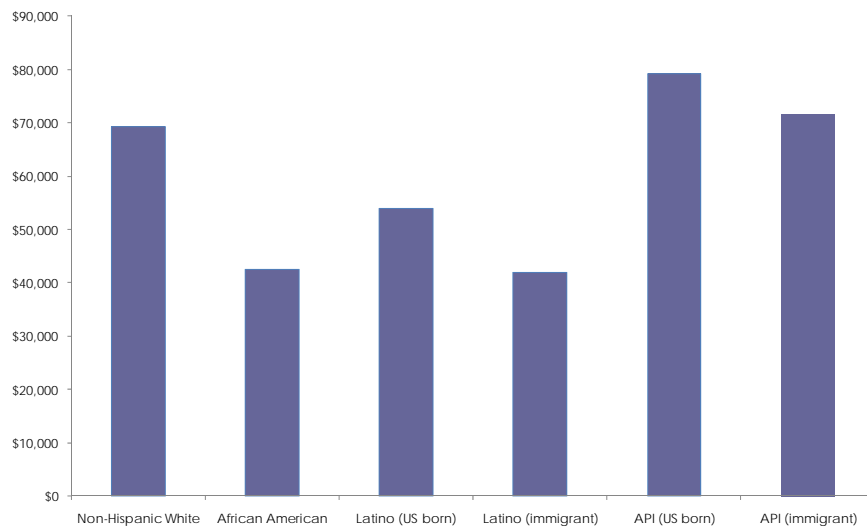


## THE CONTINUING SIGNIFICANCE OF RACE



## AND OF NATIVITY . . .

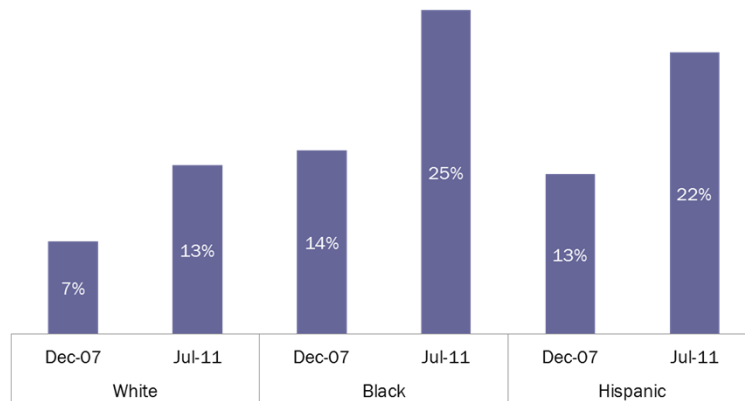
California: Median Household Income by Race and Nativity (2007-2009)



## HIT HARD BY RECESSION

### Communities of Color Have Been Hit Hardest in the Recession

Percent Unemployed or Underemployed, Age 16 and Above



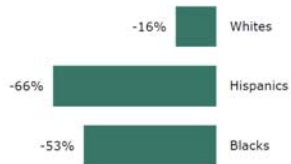
Source: EPI analysis of data from the U.S. Bureau of Labor Statistics, Current Population Survey.  
 Note: The data for whites and blacks are inclusive of Hispanics. The underemployed includes those working part-time involuntarily and those who want, are available for, and have looked for work in the past year but are not currently employed or looking.

## THE WEALTH GAP

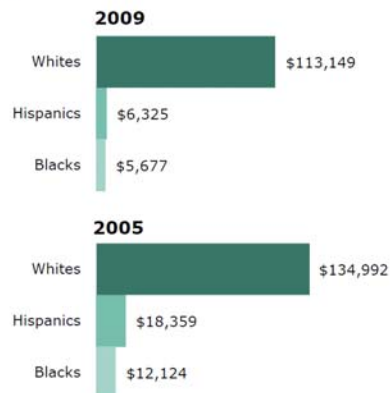
### Median Net Worth of Households, 2005 and 2009

in 2009 dollars

### Percentage Change in Median Net Worth of Households, 2005 to 2009

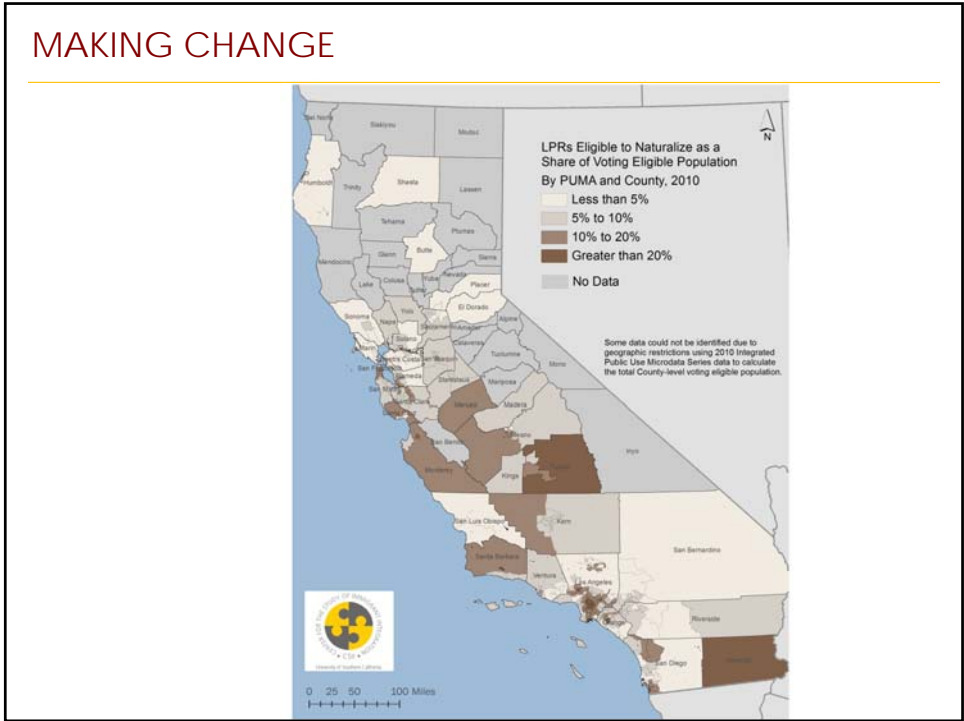


Source: Pew Research Center tabulations of Survey of Income and Program Participation data  
 PEW RESEARCH CENTER

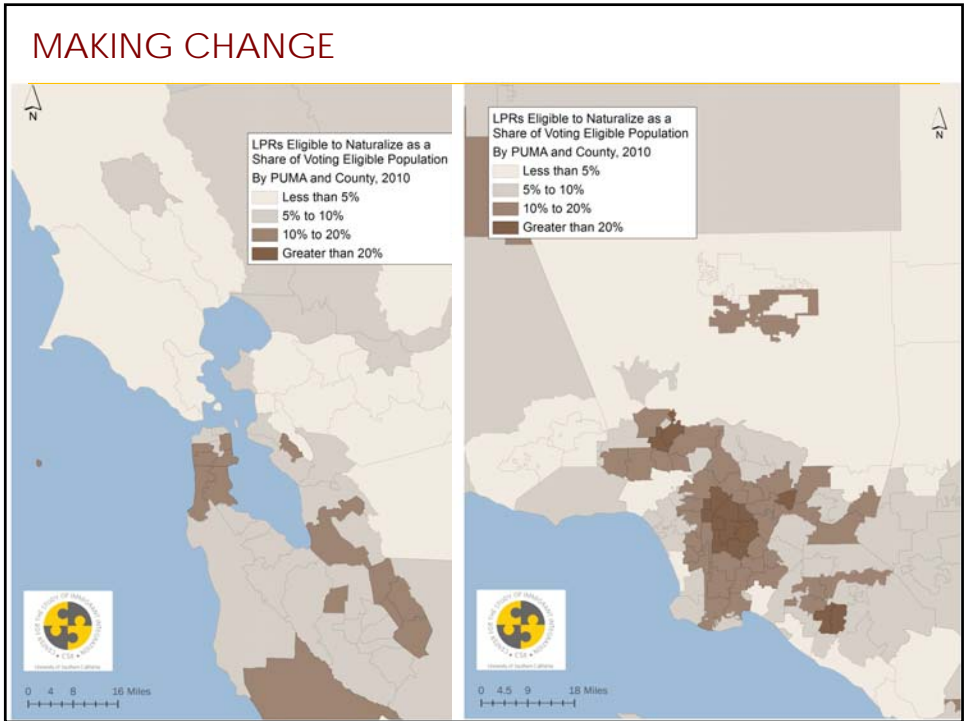


Source: Pew Research Center tabulations of Survey of Income and Program Participation data  
 PEW RESEARCH CENTER

# MAKING CHANGE



# MAKING CHANGE



## WHAT'S THIS MEAN FOR COMMUNITY BUILDING?

---



- Keep pitching to the **coming California**
- Understand that this is an **aspirational** not an angry **constituency**
- Keep our eyes on economic **growth** as well as **fairness**



- Understand the central task: **bridging generations and geographies**
- Build **movements**, not just **organizations**

## WHAT'S THIS MEAN FOR LEADERSHIP?

---



- Understand that equity and inclusion are no longer luxuries but imperatives for economic and social sustainability



- Understand the need for policy packages, unexpected alliances, and new collaborations

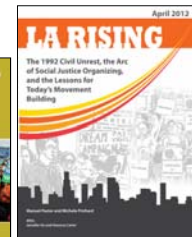
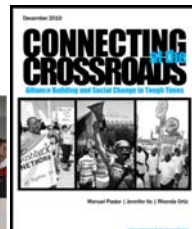


- Understand that collaboration and conflict can go together

## LEADING THROUGH THE DIVIDE



## PERE'S ARC OF RESEARCH



Visit us at:  
<http://dornsife.usc.edu/perc>