

Supplemental Materials

Caseload Growth Forecasting Tool

CWDA Realignment

1. DBF – Converting FoxPro files to excel step by step instructions
2. Assistance claim – data entry guide

Converting FoxPro Files to Excel

Background:

FoxPro is a database program published by Microsoft. Information stored in its files is stored in .DBF format (Database) and can be converted to Excel with a DBF Viewer (see below).

The Quarterly CECs are inputted into FoxPro and stored in a series of DBF files. Due to FoxPro's hardcode programming, only a limited number of useful files are downloadable. Locate where your files are stored. The files will look like this:

The screenshot shows a Windows Explorer window with the following table of files:

Name	Size	Type	Modified
cw_salbn.dbf	1 KB	DBF File	3/1/2007 10:18 AM
dfa_403.dbf	2 KB	DBF File	3/1/2007 10:56 AM
dfa_55.cdx	8 KB	CDX File	9/14/2006 3:55 PM
dfa_55.dbf	50 KB	DBF File	3/1/2007 10:18 AM
dfa_55_sm_tab.CDX	8 KB	CDX File	3/1/2007 10:18 AM
dfa_55_sm_tab.dbf	25 KB	DBF File	3/1/2007 10:18 AM
dfa_7a.cdx	11 KB	CDX File	9/14/2006 4:01 PM
dfa_7a.dbf	104 KB	DBF File	3/1/2007 10:23 AM
DFA327_5_NEW.TXT	44 KB	Text Document	10/26/2006 4:19 PM
DFA327_7_NEW.TXT	1 KB	Text Document	8/31/2005 10:21 AM
dfa3271.cdx	6 KB	CDX File	3/1/2007 10:18 AM
dfa3271.dbf	31 KB	DBF File	3/1/2007 10:18 AM
dfa3273a.cdx	8 KB	CDX File	3/1/2007 10:18 AM
dfa3273a.dbf			
dfa419.cdx			
dfa419.fpt			
DFA419.TBK			
dfa55_new.TXT			
dfa55_sb.dbf			
dfa55_sm.cdx			
dfa55_sm.dbf			
dfa55_sm_diff.CDX			
dfa55_sm_diff.dbf			
dfa7_rec.cdx			
dfa7_rec.dbf			
dfa7_sal.dbf			
dfa7a_diff.CDX	5 KB	CDX File	3/1/2007 10:18 AM
DFA7A_DIFF.DBF	7 KB	DBF File	3/1/2007 10:18 AM
dir_cost_diff.CDX	4 KB	CDX File	3/1/2007 10:18 AM
DIR_COST_DIFF.DBF	19 KB	DBF File	3/1/2007 10:18 AM
dircost_diff.cdx	33 KB	CDX File	8/5/2004 1:04 PM
dircost_diff.dbf	266 KB	DBF File	6/2/2006 9:57 AM
disaster_add.cdx	5 KB	CDX File	11/22/2005 11:44 AM
disaster_add.dbf	20 KB	DBF File	8/14/2006 1:56 PM
dkCONTROL.CDX	210 KB	CDX File	3/1/2007 10:18 AM

Here are some samples of DBF Files that were generated by FoxPro.

Note: These files can be exported to Excel and used for the CODB or Quarterlies.

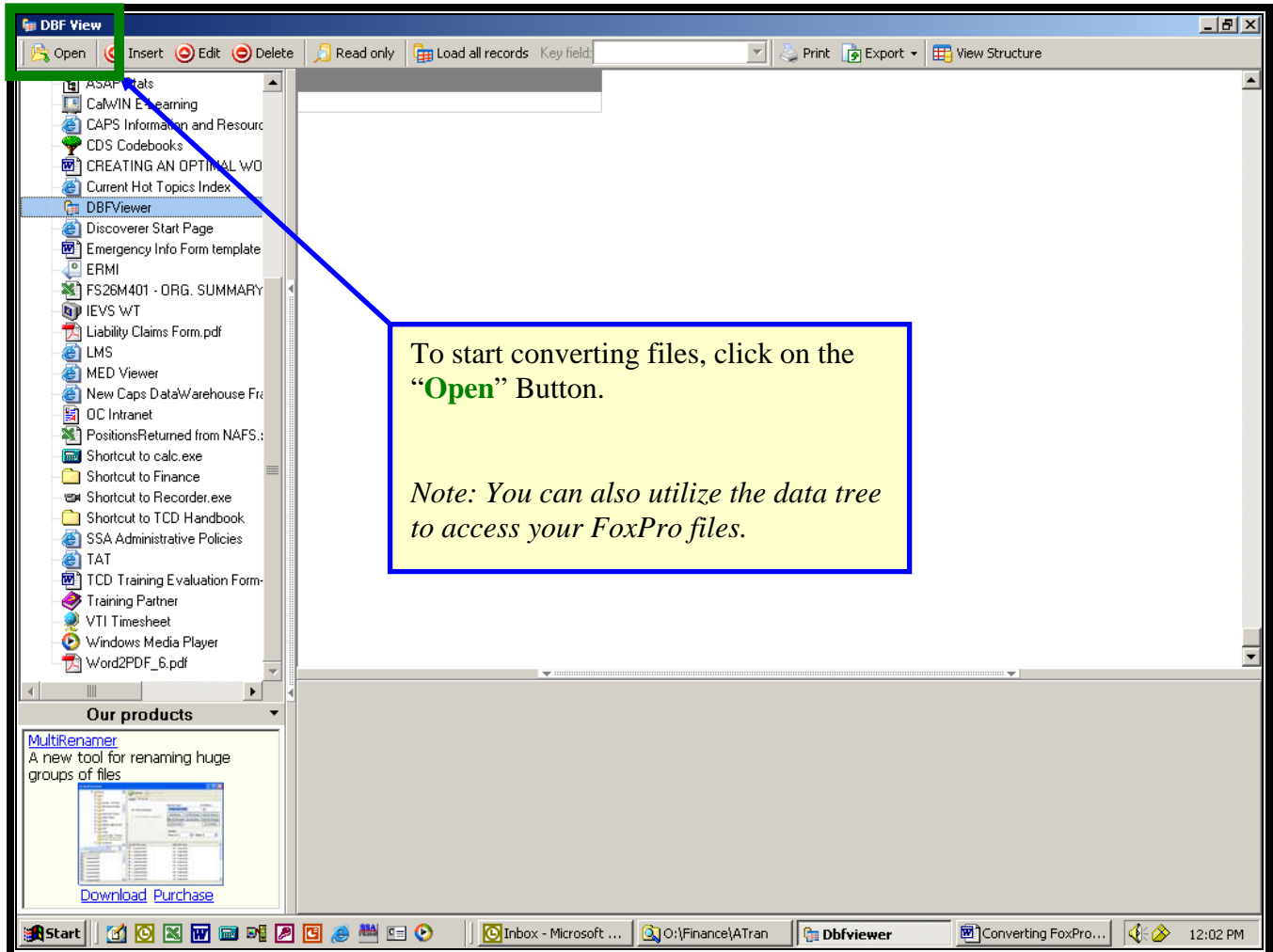
DBF Viewer

The viewer is a small (1.75 MB) program and can be copied onto your computer. It is a relatively easy program to navigate.

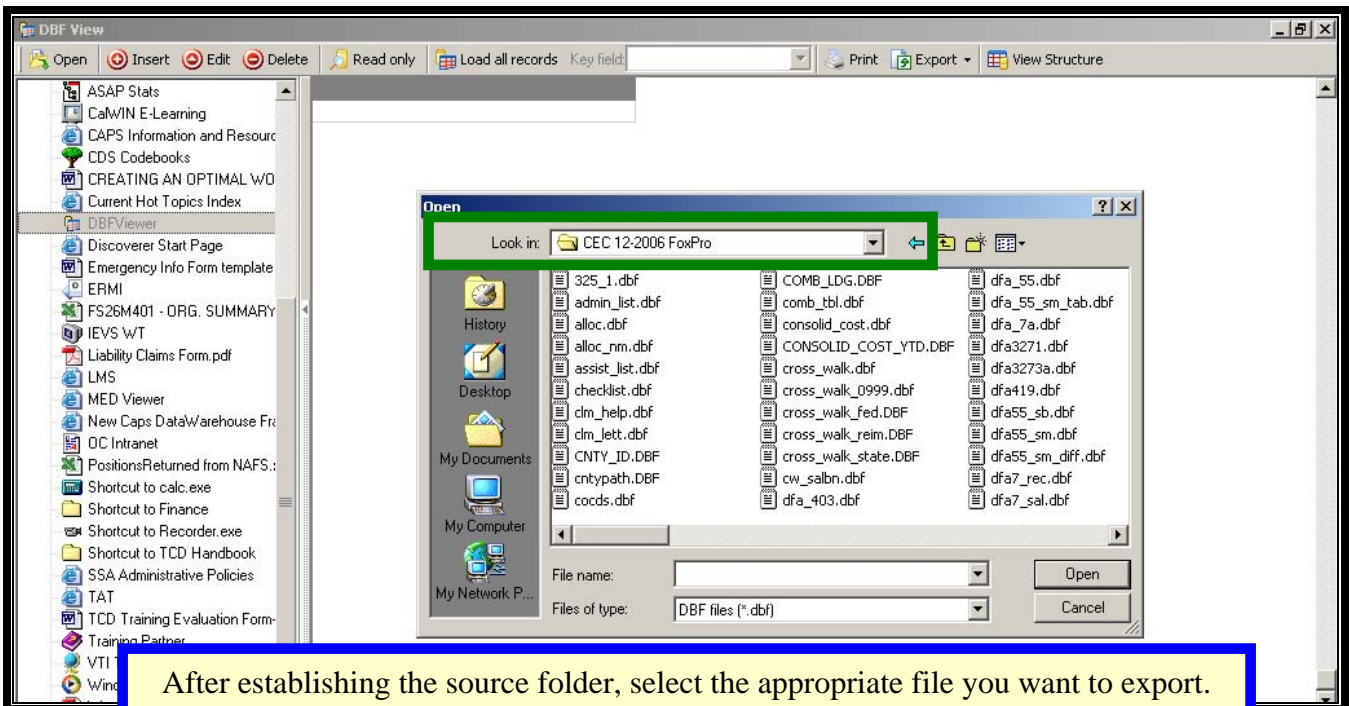
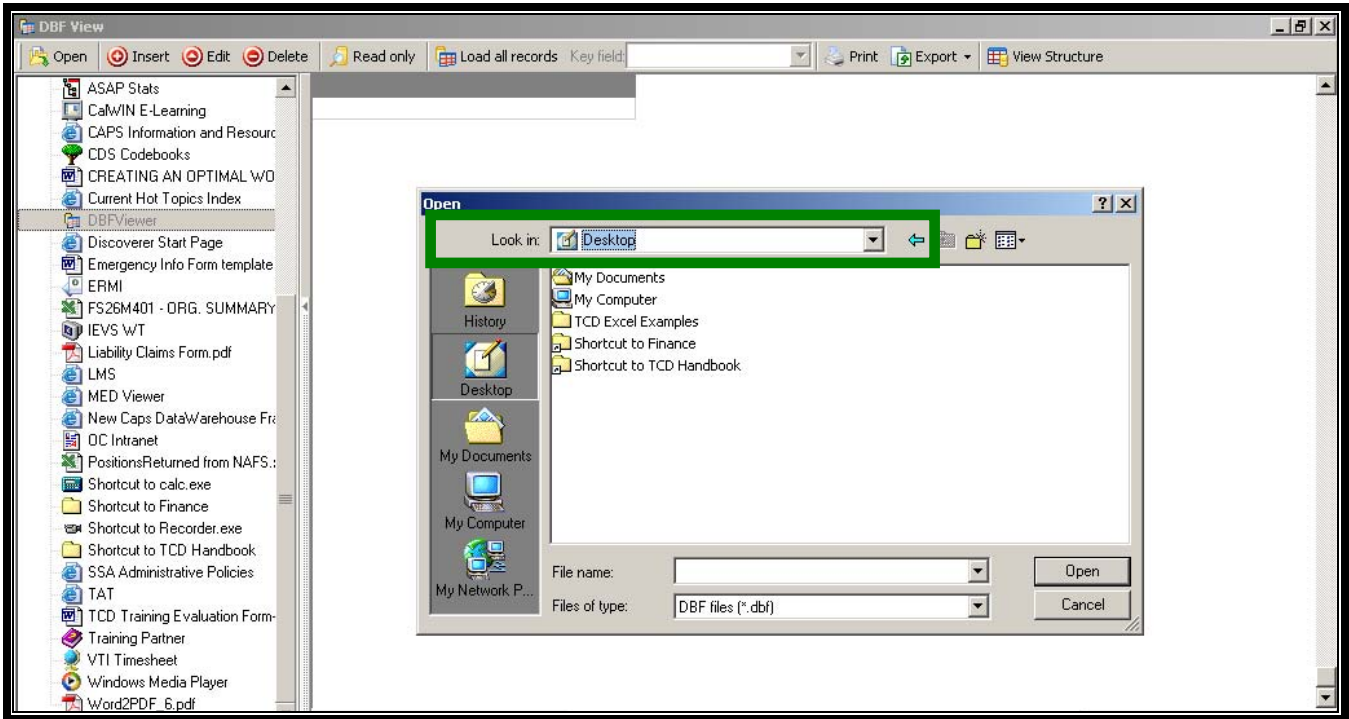


Using the DBF Viewer:

When the software is launched, the viewer will look like this:

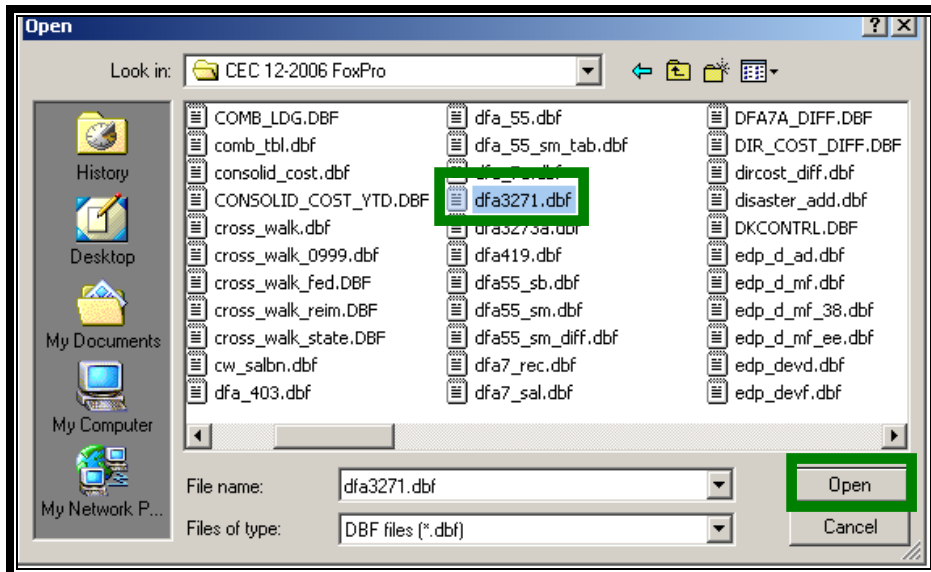


- Once you've clicked the "Open" Button, a pop-up menu will appear. Put in the appropriate pathway for the DBF file (FoxPro). This is the source folder where DBF Viewer will pull files.



After establishing the source folder, select the appropriate file you want to export. Majority of the files are appropriately named after the schedule number (Example: DFA 327.1, DFA 55, etc).

** See reference page for more information*



- Select the file name
- Click “Open”

•

In our example, we’ve selected a file titled “dfa3271.dbf”. This is for report DFA 327.1 – Distribution of Salaries, Allocation and Operating Costs.

PRG_CODE	P_CODE_EXC	PRG_TITLE	NTOT_HRS	SAL_DIS_TO	PRG_RAT	GEN_DIS_FC	AL_SUP
103		SUBTOTAL - IHSS - PCSP/	8025	1438222	0.069638		14020
104		SUBTOTAL - IHSS - Non-HI	1426	256674	0.012374		2491
143		SUBTOTAL - CWS-Elig Deb	834	150108	0.007237		1457
144		SUBTOTAL - CWS HR	2775	499493	0.024081		4848
147		SUBTOTAL - CWS Court Re	20282	3650680	0.176001		35433
148		SUBTOTAL - CWS Case Ma	43213	7778130	0.374989		75495
513		SUBTOTAL - EA-ER	13071	2352726	0.113426		22836
215		SUBTOTAL - Medi-Cal	107814	13119596	0.767217		188359
005		SUBTOTAL - STAP	0	0	0		0
588		SUBTOTAL - STOP	6	1074	5.2E-5		10
451		NONFEDERAL WTW (A 3/	1054	128249	0.015448		1841
453		STAGE ONE CHILD CARE	6880	836981	0.796665		12020
556		CWS-MPS (AB 908)	0	0	0		0
610		Calworks Jail Match (SB 15	0	0	0		0
614		Calworks Eligibility	26865	3268300	0.393748		46934
615		Initial EI Determ-Calworks/M	2607	317092	0.03821		4555
616		Nonfederal Calworks Elig	797	96991	0.011681		1392
617		CalLearn Case Managemer	0	0	0		0
618		Calworks Program Integrity	0	0	0		0
620		WTW Pre-Assessment	9114	1108371	0.13358		15923
621		WTW Post-Assessment: Co	666	81009	0.009761		1163
622		WTW Post-Assessment: Oth	2704	328943	0.039631		4724
623		WTW Post-Assessment: Voi	1053	128031	0.015433		1840
624		WTW Assessment	3689	448756	0.054068		6445
630		CalLearn Administration	39	4750	0.000572		68
631		Calworks Transitional Servic	255	31022	0.003737		445
343		NAFS Eligibility	20361	2477692	0.144891		35571
344		NAFS Program Integrity	0	0	0		0
345		AFDC Foster Care Eligibility	4152	505247	0.029546		7254
347		NAFS Quality Control	555	67539	0.003949		969

The DBF File will now be extracted into a spreadsheet.

In this example (DFA 327.1), we can see the Program Codes, the Program Titles, program ratios and salary distributions associated with each PIN.

Note: The Columns may not appear in the exact order as on the hard copies of the CEC.

To export the file to Excel:

- Click on the “Export” Button
- Select “Export to Excel”

Hint: Changes made on this screen will automatically save in the DBF file. Do not edit any information. You can click on the “Read Only” Button to prevent changes from happening.

PRG_CODE	P_CODE_EXC	PRG_TITLE	NTOT_HRS		GEN_DIS_FC	AL_SUP
103		SUBTOTAL - IHSS - PCSP/	8025		0.069638	14020
104		SUBTOTAL - IHSS - Non-HI	1426		0.012374	2491
143		SUBTOTAL - CWS-Elig Deb	834	150108	0.007237	1457
144		SUBTOTAL - CWS HR	2775	46193	0.024081	4848
147		SUBTOTAL - CWS Court Re	20282	365380	0.176001	35433
148		SUBTOTAL - CWS Case Ma	43213	777130	0.374989	75495
513		SUBTOTAL - EA-ER	13071	235726	0.113426	22836
215		SUBTOTAL - Medi-Cal	107814	1311596	0.767217	188359
005		SUBTOTAL - STAP	0	0	0	0
588		SUBTOTAL - STOP	6	074	5.2E-5	10
451		NONFEDERAL WTW (A 3/	1054	12249	0.015448	1841
453					0.796665	12020
556					0	0
610					0	0
614					0.393748	46934
615					0.03821	4555
616					0.011681	1392
617					0	0
618					0	0
620					0.13358	15923
621					0.009761	1163
622					0.039631	4724
623					0.015433	1840
624					0.054068	6445
630					0.000572	68
631					0.003737	445
343					0.144891	35571
344					0	0
345					0.029546	7254
347					0.003949	969

Save in: CEC 12-2006 Excel

- 403 (12-2006 - from dfa_403 FoxPro).xls
- 55 and 55A (12-2006 - from dfa55_sm FoxPro).xls
- 7A (12-2006 - from dfa_7a FoxPro).xls
- 7B (12-2006 - from dfa7_rec FoxPro).xls
- 7B Grand Total line for Salaries (12-2006 - from dfa7_sal FoxPro).xls

File name: DFA 327.1

Save as type: Excel files (*.xls)

Select a folder to export the file:

- Choose a name for the file
- Press “Save”

Note: Once the file is saved, you can open it up with Excel. Formatting may be required to ensure that the report is user-friendlier.

Reference

Reports needed for Quarterlies:

327.1	Distribution of Salary, Allocation and Operating Costs
327.3	Program Cost Summary
327.5 P1	Welfare Program Adjustment and Fiscal Incentive
327.4	Staff Development Cost Summary and Funding
327.5	Welfare Program Funding

Reports needed for CODB:

7A	Support Staff Summary
7B	Reconciliation of General Admin, Prog Admin, Clerical Support and FTE
55	Casework Time Study and Salary Distribution by Cost Pool/Program
325.1	CEC Expenditure Schedule
327.1	Distribution of Salary, Allocation and Operating Costs
327.2	EDP - Cost Schedule
327.3	Program Cost Summary
403	FTE Calculation
325.1B	Direct Cost Input Schedule

FoxPro Files Equivalents (based FY 06-07 Quarters):

CEC Report

FoxPro DBF File Equivalent

7A	DFA_7a
7B	DFA7_rec
55	DFA55_sm (don't use DFA_55.dbf)
325.1	325_1
325.1B	progidcd
327.1	DFA3271
327.2	EDP_totl
327.3	DFA3273a
327.4	stf_dev
327.5 and 327.5P	WELFARE
403	DFA_403
Ledger	COMB_LDG

Additional Useful Information:

DFA 325.1 (line AC, columns AA - AE)

CEC Hard Copies	FoxPro Converted File
Social Services Casework Ratios	SS_CW_RAT
CalWORKS Casework Ratios	CW_CW_RAT
Other Public Welfare Casework Ratios	OP_CW_RAT
Child Care Casework Ratios	CC_CW_RAT
NonWelfare Casework Ratios	NW_CW_RAT

DFA 55

CEC Hard Copies	FoxPro Converted File
Program Code (4-digit). Can filter out all PIN ending with "A" since they are the totals. However, these will not affect VLOOKUP formulas.	PRG_CODE
Social Worker Time Study Hours	TS_HRS_SW
Employment Service Workers Time Study Hours	TS_HRS_ES
Eligibility Determination Workers Time Study Hours	TS_HRS_ED
Fraud Investigators Time Study Hours	TS_HRS_FR
Program Ratio (Social Worker)	PRG_RAT_SW
Program Ratio (Employment Services Workers)	PRG_RAT_ES
Program Ratio (Eligibility Determination Workers)	PRG_RAT_ED
Program Ratio (Fraud Investigators)	PRG_RAT_FR

DFA 7B

CEC Hard Copies	FoxPro Converted File
Benefiting Level (<i>Note: Generic is out of order</i>)	FUNC_TITLE
General Admin Support Staff – Salaries	GS_ADM_DS
General Admin Support Staff – Ratio	GS_ADM_RAT
General Admin Support Staff – FTE	GS_FTE
Program Admin Support Staff – Salaries	PG_ADM_DS
Program Admin Support Staff – Ratio	PG_ADM_RAT
Program Admin Support Staff – FTE	PG_FTE
Clerical Support Staff – Salaries	CLER_DS
Clerical Support Staff – Ratio	CLER_RAT
Clerical Support Staff – FTE	CLER_FTE

DFA 327.1

CEC Hard Copies	FoxPro Converted File
Function Can use this to sort: 1 = Social Services, 2 = CalWORKS, 3 = Other Public Welfare, 4 = Child Care, 5 = NonWelfare	FUNC
Program Code	PRG_CODE
Time Study Hours	NTOT_HRS
Distribution of Salary Costs	SAL_DIS_TO
Ratio	PRG_RAT
Generic Salary Cost	GEN_DIS_FC
Allocable Support Staff Costs	AL_SUP_COS
Direct-to-Program Support Staff Costs	DTP_COS
Allocable Support Operating Cost	AL_OP_COS
Adjustments	TOT_ADJ

DFA 327.2

CEC Hard Copies	FoxPro Converted File
Program Code	EDP_CODE
M & O Direct Cost	TOT_EDP
M & O Allocable Cost	ALLOC_AMT
Developmental Direct Cost	TOT_DIR
Multi-Function Develop SACWIS/Non-SACWIS	TOT_DEV_MF
EDP Adjustment Allocable Cost	TOT_ADJ

DFA 325.1B

CEC Hard Copies	FoxPro Converted File
Program ID # <i>(Note: All program costs will be listed regardless of 0 value. You can sort and delete these rows of data prior to pasting into the Data Spreadsheet)</i>	PROGID
Program Title	TITLE_325
Type of Expense	XTENM
Direct Costs	DIR_COST

DFA 327.3

CEC Hard Copies	FoxPro Converted File
Program Code	PRG_CODE
Total EDP Cost	TOT_EDP_CO
Casework & Allocable Support Cost	TOT_CW_COS
Direct Costs	DIR_SUB
EA Cost Eligible	EA_ADJ
PAFS Shifts	PAFS_ADJ
AFDC/TANF Adjustment	AFDC_ADJ
Non Fed Costs	NON_FED
CFAP/2 Parent Families	CFAP_MINOR
CFAP Singles	CFAP_AGED

SUMMARY REPORT OF ASSISTANCE EXPENDITURES
FOSTER CARE, FOSTER CARE SB 163,
FEDERAL

County	Date (Month/Year)
Claim Contact	Telephone

		Foster Care			SB 163			
Aid Code		Persons Count	Current	Prior Period Adjustments	Current	Prior Period Adjustments		
1	Main Payroll		42	42	42	42		
2	Current Month Supplemental Payroll							
3	Current Month Cancellation Contra Roll							
4	Prior Months Supplemental Payroll							
5	Current Month Adjustment							
6	Subtotal (Lines 1 - 5)	-	-	-	-	-		
7	Prior Months Cancellation Contra Roll							
8	Recoveries of Aid							
9	Prior Month Negative Adjustment							
10	Subtotals (Lines 7 - 9)	-	-	-	-	-		
11	Prior Month Positive Adjustment							
12	Office Audit Corrections							
13	TOTAL PAYROLL, CURRENT + PRIOR MONTH (Lines 6+10+11+12)	-	-	-	-	-		
14	Amount Not Reimbursable at Fed FMAP Rate [FC 1 & Adj Col D6+E2(FFAs)+J4(Grp Homes)]							
15	TOTAL - Line 13 - Line 14							
16	THPP Rate Increase							
17	Supplemental Clothing Allowance (50/50/0)							
18	IV-E Child Care							
19	Funeral Costs (100% State)							
20	Educational Travel Reimbursement (50/20/30)							
21	TOTAL ALL PAYMENTS (Lines 13+16+17+18+19)	-	-	-	-	-		
Summary by Funding		Federal	Federal (ARRA)	State	State (ARRA)	County 2011	County/Co. ARRA	Total
22	Foster Care	-	-			-	-	-
23	Fed Adm Costs (FC1 & Adj Col E4)	-				-	-	-
24	Non Fed. Admin Costs (FC1 & Adj Col F2)					-	-	-
25	THPP Rate Increase	-				-	-	-
26	Supplemental Clothing Allowance	-				-	-	-
27	IV-E Child Care	-				-	-	-
28	Funeral Costs							-
29	Educational Travel Reimbursement							-
30	Total Payment Federal Foster Care	-	-			-	-	-
31	SB 163-Basic							-
32	Fed Adm Costs (FC1 SB163 & Adj Col E4)FFAs x 50%	-				-	-	-
33	Total Payment SB 163	-				-	-	-
34	Total Foster Care and SB 163	-				-	-	-

Last Modified: 07/01/13

**SUMMARY REPORT OF ASSISTANCE EXPENDITURES
FOSTER CARE, NONFEDERAL**

County	Date (Month/Year)
Claim Contact	Telephone

Aid Code	Foster Care 40		TOTAL
1 Main Payroll			-
2 Current Month Supplemental Payroll Payroll			-
3 Current Month Cancellation Contra Roll			-
4 Prior Months Supplemental Payroll			-
5 Current Month Adjustment			-
6 Subtotal (Lines 1 - 5)	-	-	-
7 Prior Months Cancellation Contra Roll			-
8 Recoveries of Aid			-
9 Prior Month Negative Adjustment			-
10 Subtotals (Lines 7 - 9)	-	-	-
11 Prior Month Positive Adjustment			-
12 TOTAL PAYMENTS, CURRENT + PRIOR MONTH (Line 6+10+11)	-	-	-
13 County 2011 (40%)	-	-	-
14 County Share (60%)	-	-	-
15 THPP Rate Increase			-
16 County 2011 (40%)	-	-	-
17 County Share (60%)	-	-	-
18 Supplemental Clothing Allowance (100% County 2011)			-
19 Funeral Costs (100% State)			-
20 Educational Travel Reimbursement (40% County 2011 / 60% County)			-
21 Total	-	-	-
22 Persons Count			-

County Use Only (non-add line)			-
--------------------------------	--	--	---

Summary by Funding/Program	State	County 2011	County	Total
23 Foster Care		-	-	-
24 SED		-	-	-
25 THPP		-	-	-
26 Supplemental Clothing Allowance (Line 18)		-	-	-
27 Funeral Costs	-	-	-	-
28 Educational Travel Reimbursement		-	-	-
29 Total	-	-	-	-

Last Modified: 07/01/13

**SUMMARY REPORT OF ASSISTANCE EXPENDITURES
CALIFORNIA WORK OPPORTUNITY AND RESPONSIBILITY TO KIDS (CalWORKs)
ASSISTANCE, CALWORKS DIVERSION, AND KinGAP
FEDERAL**

County	Date (Month/Year)
Claim Contact	Telephone

		All Families	Zero Parent	2 Parent	TANF Timed Out	Diversion AF	Diversion 2Pr	KinGAP	Total
Aid Code		30/3P	33/3R	35	32	3J	3K	4F	
Current Month									
1	Main Payroll								-
2	Current Month Supplemental Payroll								-
3	Current Month Cancellation Contra Roll								-
4	Prior Month Supplemental Payroll								-
5	Current Month Adjustment								-
6	Subtotal (Lines 1 - 5)	-	-	-	-	-	-	-	-
7	Amount payable with State/County Funds Only				-				-
8	Federal/State/County 2011 Share (Line 6 minus Line 7) x 97.5%	-	-	-	-				-
Prior Month									
9	Prior Month Cancellation Contra Roll								-
10	Recoveries of Aid								-
11	Prior Month Negative Adjustment								-
12	Subtotal (Lines 9 - 11)	-	-	-	-	-	-	-	-
13	Amount payable with State/County funds only				-				-
14	Federal/State/County 2011 Share (Line 12 minus Line 13) x 97.5%	-	-	-	-				-
15	Prior Month Positive Adjustment								-
16	Grant-Based On-the-Job Training (OJT) (Wage Subsidy)								-
17	Amount payable with State/County Funds Only				-				-
18	Supplemental Clothing Allowance								-
19	Federal/State/County 2011 Share (Line 15 + Line 16 - Line 17) x 97.5%	-	-	-	-	-	-	-	-
20	TOTAL AID PAYMENTS, Current + Prior Months (Lines 6+12+15+16+18)	-	-	-	-	-	-	-	-
21	Number of Federal Assistance Units								-
22	Amount Payable by State/County 2011 Funds - Multiplied by \$1.00	-	-	-	-				-
23	Persons Count								
SUMMARY BY FUNDING					1/	2/	3/		
24	Federal				-				-
25	State/County 2011 (Line 7 + Line 13 + Line 17) x 95% + (Line 22 x 5%)	-	-	-	-				-
26	Fed/State/County 2011 (Line 8 + Line 14 + Line 19)	-	-	-	-	-	-	-	-
27	County (Line 20 - Line 25 - Line 26)								-
28	Total	-	-	-	-	-	-	-	-
SUMMARY BY PROGRAM		Federal	State/County 2011	Fed/State/Co 2011	County	Total			
29	All Families/Zero Parent/2 Parent (30, 3P, 33, 3R, 35)		-	-	-	-	1/ Funding 97.5% State-County 2011 and 2.5% County for the basic grant.		
30	TANF Timed-Out (32)		-	-	-	-	2/ 97.5%/2.5% (Fed-State-County 2011/County)		
31	Diversion (3J, 3K)		-	-	-	-	3/ 79% State-County 2011 /21% County		
32	KinGAP (4F)		-	-	-	-			
33	Total	-	-	-	-	-			
34	Grant-Based OJT (Wage Subsidy) Information Only		-	-	-	-			

Last Modified: 07/01/13

SUMMARY REPORT OF ASSISTANCE EXPENDITURES
ADOPTION ASSISTANCE, EMERGENCY
ASSISTANCE-FOSTER CARE (EA-FC)
REFUGEE CASH ASSISTANCE (RCA),
FEDERAL

County	Date (Month/Year)
Claim Contact	Telephone

		Adoptions	Adoptions Prior Period Adjustments	EA-FC	RCA	Totals		
Aid Code		03	03	5K	01/08			
1	Main Payroll						-	
2	Current Month Supplemental Payroll						-	
3	Current Month Cancellation Contra Roll						-	
4	Prior Month Supplemental Payroll						-	
5	Current Month Adjustment						-	
6	Subtotal (Lines 1 - 5)	-	-	-	-	-	-	
7	Prior month cancellation Contra Roll						-	
8	Recoveries of Aid						-	
9	Prior Month Negative Adjustment						-	
10	Subtotal (Line 7 - 9)	-	-	-	-	-	-	
11	Prior Month Positive Adjustment						-	
12	TOTAL AID PAYMENTS, Current + Prior Months (Lines 6+10+11)	-	-	-	-	-	-	
13	Amount Not Reimbursable with Federal Funds						-	
14	Net Amount Payable (Lines 12 - 13)	-	-	-	-	-	-	
<i>Sharing Ratios (Federal/State/County 2011/County)</i>		FMAP Rate (60/37.6/12.6)	ARRA FMAP Rate	(70/0/30)	Federal: 100% of Line 14 State: 100% of Line 13			
15	Federal	-	-	-	-	-	-	
16	State/County 2011	-	-	-	-	-	-	
17	County Share	-	-	-	-	-	-	
18	THPP Rate Increase						-	
19	Educational Travel Reimbursement (70/0/30)						-	
<i>Sharing Ratios (Federal/State/County)</i>				(70/0/30)				
20	Federal Share						-	
21	County 2011						-	
22	County Share						-	
23	Supplemental Clothing Allowance						-	
24	Federal Share (100%)						-	
25	Total All Payments	-	-	-	-	-	-	
26	Persons Count						-	
<i>County Use Only</i>								
SUMMARY BY PROGRAM		Federal	Federal (ARRA)	State	State (ARRA)	County 2011	County/Co ARRA	Total
27	Adoptions-Federal	-	-	-	-	-	-	-
28	EA-FC	-	-	-	-	-	-	-
29	RCA/Hardship (State is Hardship cases)	-	-	-	-	-	-	-
30	THPP	-	-	-	-	-	-	-
31	Educational Travel Reimbursement	-	-	-	-	-	-	-
32	Total Federal Programs	-	-	-	-	-	-	-

Last Modified: 07/01/13

**SUMMARY REPORT OF ASSISTANCE EXPENDITURES
ADOPTION AND TRAFFICKING & CRIME VICTIMS
ASSISTANCE PROGRAMS, NONFEDERAL**

County	Date (Month/Year)
Claim Contact	Telephone

	Persons Count	Amount	Persons Count	Amount
Aid Code	04	04	1V	1V
1 Main Payroll				
2 Current Month Supplemental Payroll				
3 Current Month Cancellation Contra Roll				
4 Prior Months Supplemental Payroll				
5 Current Month Adjustment				
6 Subtotal (Lines 1 - 5)	-	-	-	-
7 Prior Months Cancellation Contra Roll				
8 Recoveries of Aid				
9 Prior Month Negative Adjustment				
10 Subtotals (Lines 7 - 9)	-	-	-	-
11 Prior Month Positive Adjustment				
12 TOTAL AID PAYMENTS, CURRENT + PRIOR MONTH (Lines 6+10+11)	-	-	-	-

County Use Only

Summary by Funding	State	County 2011	County	Total
13 Adoption Assistance Program (County 2011/County 75/25)		-	-	-
14 Trafficking and Crime Victims Assist Program (State/County 100/0)	-			-
15 CalWORKs TCVAP R1 (State/County 97.5/2.5)	-		-	-
16 Total	-	-	-	-

Last Modified: 07/01/13

**SUMMARY REPORT OF ASSISTANCE EXPENDITURES
CALIFORNIA WORK OPPORTUNITY AND RESPONSIBILITY TO KIDS
(CalWORKs) ASSISTANCE, CALWORKS DIVERSION, AND KinGAP
NONFEDERAL**

County	Date (Month/Year)
Claim Contact	Telephone

Aid Code	Safety Net AF 3A	Safety Net 2Pr 3C	Diversion AF 3X	Diversion 2Pr 3Y	KinGAP 4G	Total
<u>Current Month</u>						
1 Main Payroll						-
2 Current Month Supplemental Payroll						-
3 Current Month Cancellation Contra Roll						-
4 Prior Month Supplemental Payroll						-
5 Current Month Adjustment						-
6 Subtotal (Lines 1 - 5)	-	-	-	-	-	-
<u>Prior Month</u>						
7 Prior month cancellation Contra Roll						-
8 Recoveries of aid						-
9 Prior month Negative Adjustment						-
10 Subtotal (Lines 7 - 9)	-	-	-	-	-	-
11 Prior Month Positive Adjustment						-
12 Supplemental Clothing Allowance						-
13 TOTAL AID PAYMENTS, Current + Prior Months (Lines 6+10+11+12)	-	-	-	-	-	-
Amount Payable with State/County 2011 Funds Only						
14 Total Number of Assistance Units						-
15 Multiplied by \$2.00	-	-	-			-
16 Persons Count						
<u>County Use Only</u>						
						-
Summary by Funding (State-County 2011/County)						
	(97.5/2.5)	(97.5/2.5)	(95/5)	(95/5)	(79/21)	
17 State/County 2011	-	-	-	-	-	-
18 County	-	-	-	-	-	-
19 Total	-	-	-	-	-	-

SUMMARY BY PROGRAM/REPORTING CATEGORY			
	State/County 2011	County	Total
20 Safety Net All Families/Two-Parent (3A/3C)	-	-	-
21 Diversion (3X, 3Y)	-	-	-
22 KinGAP (4G)	-	-	-
23 Total	-	-	-

Last Modified: 07/01/13

CHILD SUPPORT SERVICES
SUPPLEMENT TO THE CS 34 MONTHLY REPORT OF COLLECTIONS AND DISTRIBUTIONS

County: 1) SAN DIEGO	FIPS Code: 2) 073	Report Month / Year 3) November / 2013	Report Type: 4) Initial <input checked="" type="checkbox"/> Revised <input type="checkbox"/>
-------------------------	----------------------	---	---

Section A. Collections From Other Sources (from CS 34 Part 1, Section A, Line 2, Item 2h)		
1.	Collections made by the reporting county from liens	5) \$0.00
2.	Collections made by the reporting county from workers' compensation	6) \$0.00
3.	Collections made by the reporting county through the DIB offset	7) \$0.00
4.	Collections made by the reporting county from California's Full Collections Program	8) \$0.00
4a.	Collections made by the reporting county through CIIP Intercepts	191) \$0.00
4b.	Collections made by the reporting county from NCP Regular Payments	221) \$0.00
5.	Collections made by the reporting county from other sources not listed above	192) \$0.00
6.	TOTAL	10) \$0.00

Section B. SECTION RESERVED FOR FUTURE USE

Section C. Distributions to Current Assistance Cases										
Assistance Program	Amount of Distributed Collections	Excess	Disregard	Total Recoupment	Federal Share	County Share	State Share			
8. Federal CalWorks	12) \$0.00	13) \$0.00	215) \$0.00	14) \$0.00	15) \$0.00	16) \$0.00	18) \$0.00			
9. Federal KinGap	19) \$0.00	20) \$0.00	216) \$0.00	21) \$0.00	22) \$0.00	23) \$0.00	24) \$0.00			
10. State CalWorks - SN	25) \$0.00	26) \$0.00	217) \$0.00	27) \$0.00		28) \$0.00	29) \$0.00			
11. State CalWorks - LI	30) \$0.00	31) \$0.00	218) \$0.00	32) \$0.00		33) \$0.00	34) \$0.00			
11a. State CalWorks - 4N	235) \$0.00	236) \$0.00	237) \$0.00	238) \$0.00		239) \$0.00	240) \$0.00			
12. State KinGap	35) \$0.00	36) \$0.00	219) \$0.00	37) \$0.00		38) \$0.00	39) \$0.00			
		Disregard Subtotal	59) \$0.00							
			Pass On							
13. Federal Foster Care	40) \$0.00	41) \$0.00	42) \$0.00	43) \$0.00	44) \$0.00	45) \$0.00	46) \$0.00			
13a. EA - Foster Care	222) \$0.00	223) \$0.00	224) \$0.00	225) \$0.00	226) \$0.00	227) \$0.00	228) \$0.00			
14. Non-Federal Foster Care	47) \$0.00	48) \$0.00		49) \$0.00		50) \$0.00	51) \$0.00			
15. TOTAL	52) \$0.00	53) \$0.00	220) \$0.00	55) \$0.00	56) \$0.00	57) \$0.00	58) \$0.00			

Section D. Distributions to Former Assistance Cases										
Assistance Program	Amount of Distributed Collections	Excess		Total Recoupment	Federal Share	County Share	State Share			
17. Federal CalWorks	62) \$0.00	63) \$0.00		64) \$0.00	65) \$0.00	66) \$0.00	67) \$0.00			
18. Federal KinGap	68) \$0.00	69) \$0.00		70) \$0.00	71) \$0.00	72) \$0.00	73) \$0.00			
19. State CalWorks - SN	74) \$0.00	75) \$0.00		76) \$0.00		77) \$0.00	78) \$0.00			
20. State CalWorks - LI	79) \$0.00	80) \$0.00		81) \$0.00		82) \$0.00	83) \$0.00			
20a. State CalWorks - 4N	241) \$0.00	242) \$0.00		243) \$0.00		244) \$0.00	245) \$0.00			
21. State KinGap	84) \$0.00	85) \$0.00		86) \$0.00		87) \$0.00	88) \$0.00			
22. Federal Foster Care	89) \$0.00	90) \$0.00		91) \$0.00	92) \$0.00	93) \$0.00	94) \$0.00			
22a. EA - Foster Care	229) \$0.00	230) \$0.00		231) \$0.00	232) \$0.00	233) \$0.00	234) \$0.00			
23. Non-Federal Foster Care	95) \$0.00	96) \$0.00		97) \$0.00		98) \$0.00	99) \$0.00			
24. TOTAL	100) \$0.00	101) \$0.00		102) \$0.00	103) \$0.00	104) \$0.00	105) \$0.00			