

Stanislaus County  
Community Services Agency



# After 18

## Program

Extended Foster Care  
Ages 18-21

# AFTER 18 PROGRAM CORE VALUES

- Voice of the Youth
- Assistance and Partnering
- Love and Belonging
- Unique Needs
- Eligibility is Maintained
- Development is Supported



# Youth Engagement and Staff/Partners Participation

- Youth Focus Groups

Goal: Engage the youth in a conversation regarding their needs and get their input on the goals of the program.

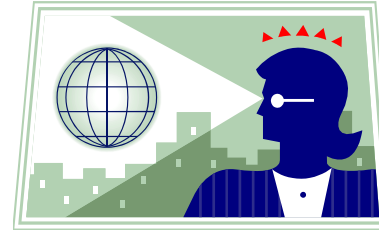
- Staff and Partners Strategic Planning-

Goal: Using input from youth, staff and partners, develop the vision and mission of After 18 program, analyze the youth's feedback regarding their needs, develop program goals and strategies to meet their needs.



**OUR COUNTY'S**

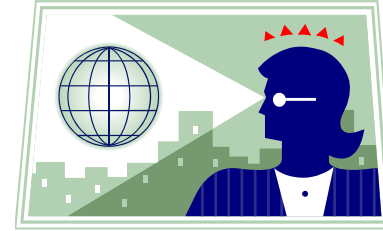
**VISION**



Every youth reaches their goal of independence and becomes a productive member of society.



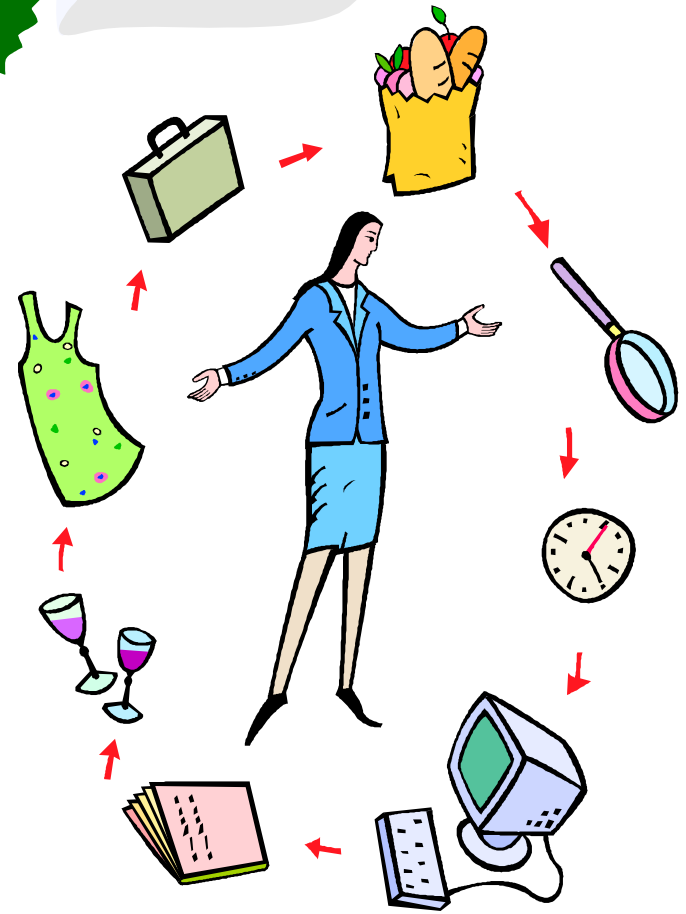
## OUR COUNTY'S MISSION



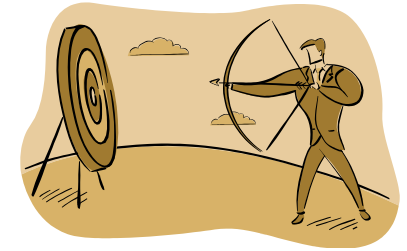
We strive to fully prepare the youth for transition to responsible adulthood and self-sufficiency. We do this:

- Building relationships with youth that are nurturing and supportive;
- Listening to their voices;
- Encouraging them to develop;
- Providing them resources (education, work experience, training);
- Teaching them life skills;
- Providing advocacy;
- Developing a support system that is nurturing and safe.

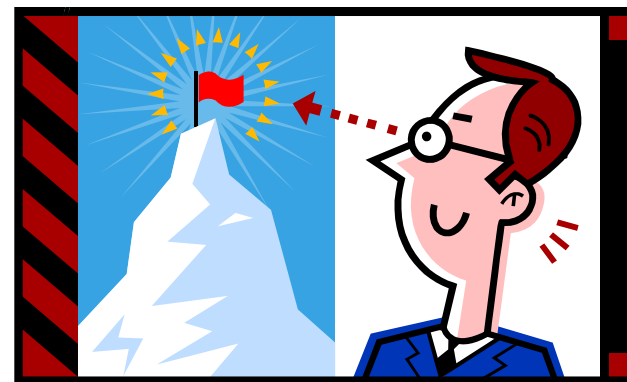
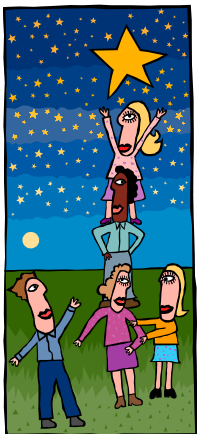
# Identified Needs of Youth



# Program Goals



1. Increase high school completion rate.
2. Improve access to post secondary education.
3. Stabilized housing opportunity.
4. Improve life skills to fully prepare the youth for responsible adulthood and self-sufficiency.
5. Provide support and access to services.
6. Strengthen current partnerships and develop new partnerships.



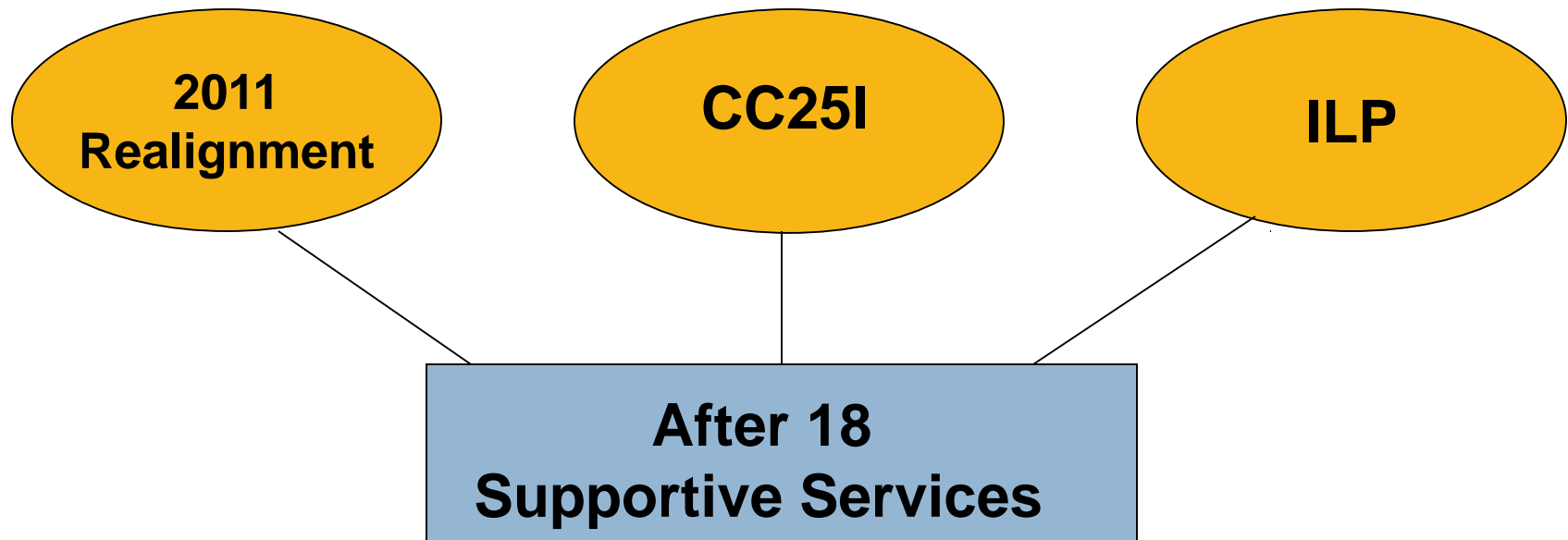
# Leveraging Resources

- Funding for After 18 Non-Minor dependents' supportive services is through State Realignment Protective Services funding linked to Child Welfare.





# Funding Sources



# Services/Support Being Provided

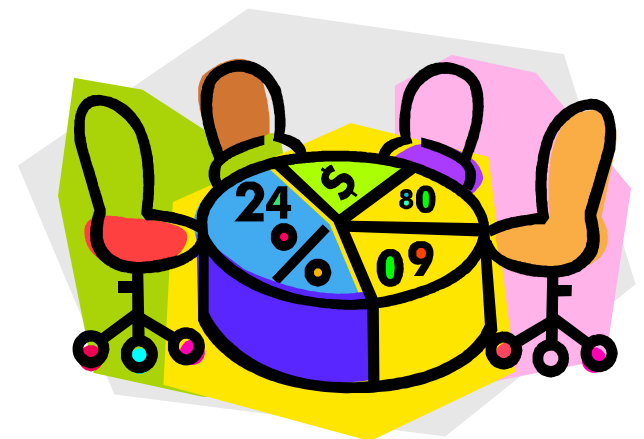
- ❑ Case Management
- ❑ Employment Services/Job internship
- ❑ Education Advocacy
- ❑ Drivers Training
- ❑ Laptop Distribution
- ❑ Tutoring Services
- ❑ Support Group
- ❑ Bus Tickets
- ❑ Housing Deposits/Start up
- ❑ Employment Clothing
- ❑ AOD services
- ❑ Purchasing of Educationally Related Items
- ❑ Other emergency needs such as child care
- ❑ Referrals to community resources



# Youth Engagement Strategies



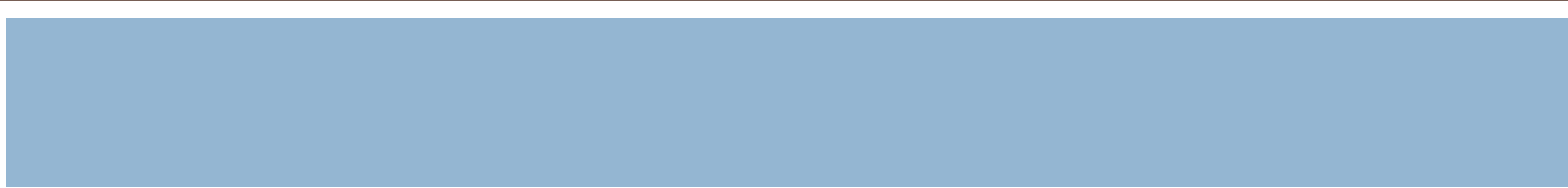
1. Transitional Youth Team Decision Meeting at 17.5
2. Early on-going conversation about EFC by social worker
3. Youth Survey
4. Discussion at ILP and CYC meeting



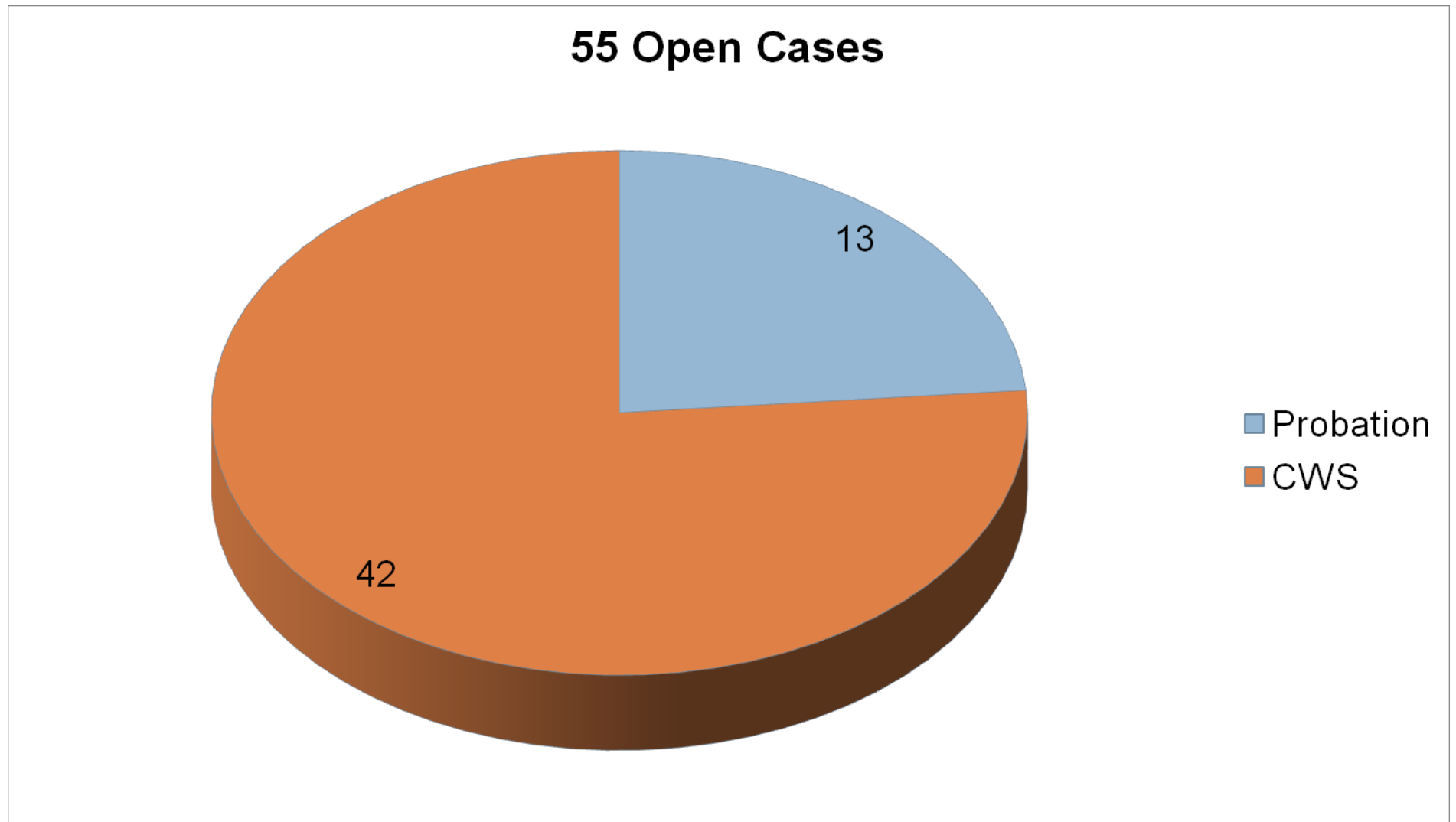
# OUR COUNTY'S DESIGN AND MODEL



- Specialized caseload
- Serves both CWS and Probation youth
- Emancipation Team Decision Meeting
- Strategic Planning with Youth, Staff and Partners that includes Mental Health
- Fiscal strategies
- Additional staffing: Youth interviewers, Community Outreach Worker, After Care Social Worker, Educational liaison
- Strengthen Current and New Partnerships/New: Housing Authority, SCOE, Children Crisis Center (Child Care), SSA, Regional Center, Faith-Based community, employment and business partners and Mental Health partners.

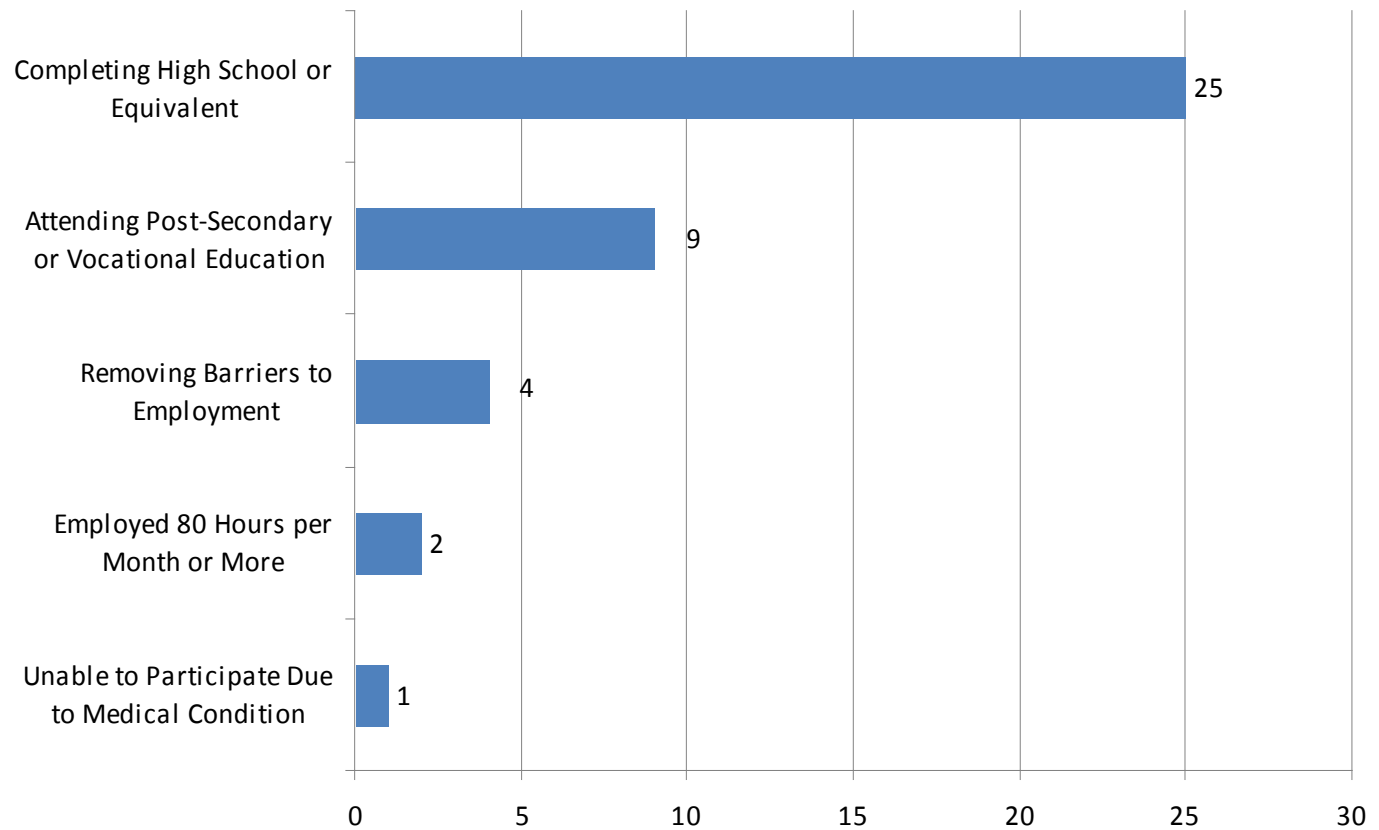


# Current Number of Participating Youth 2013



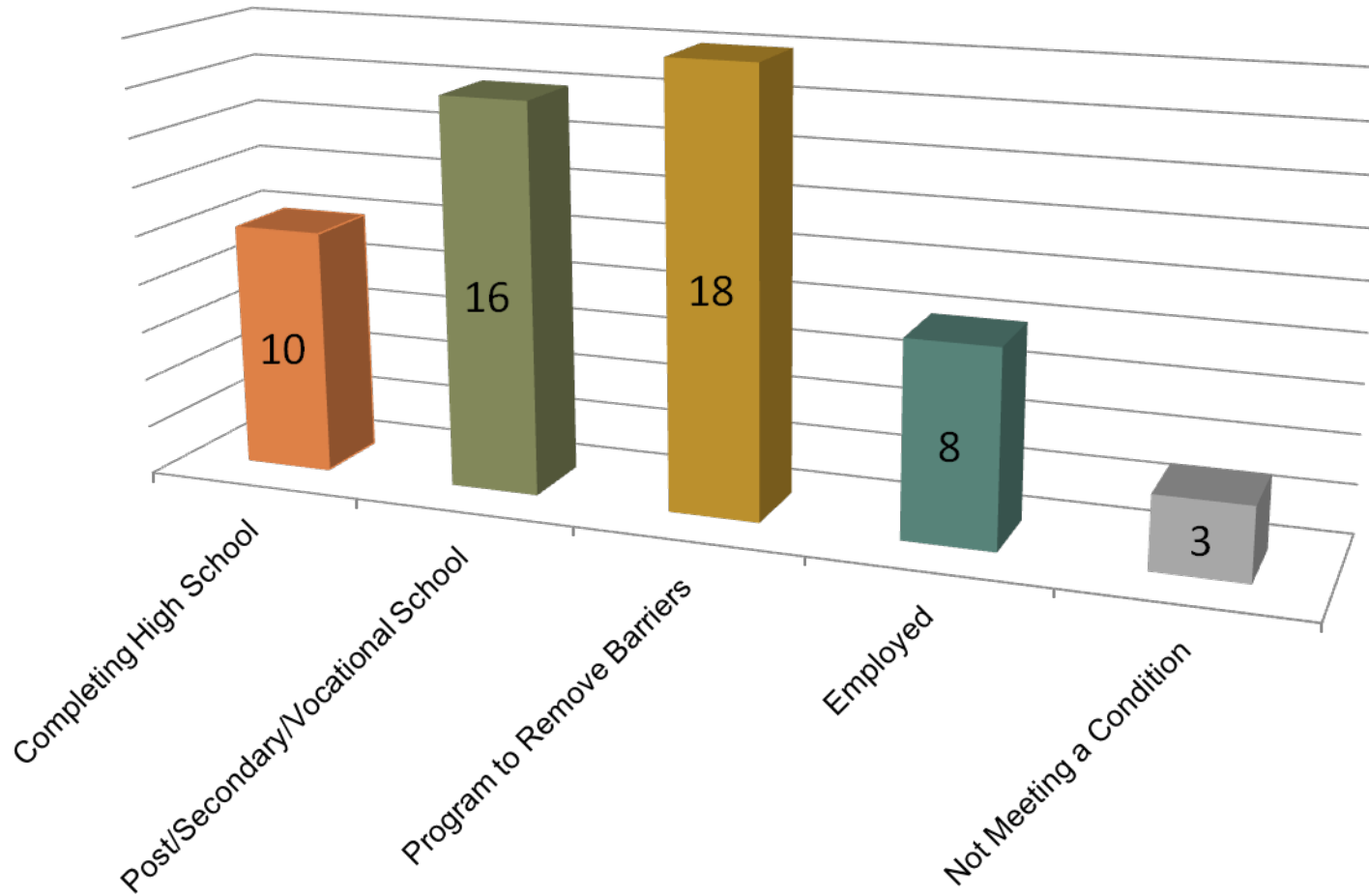
# Participation Criteria 2012

## Participation Criteria of Current NMDs





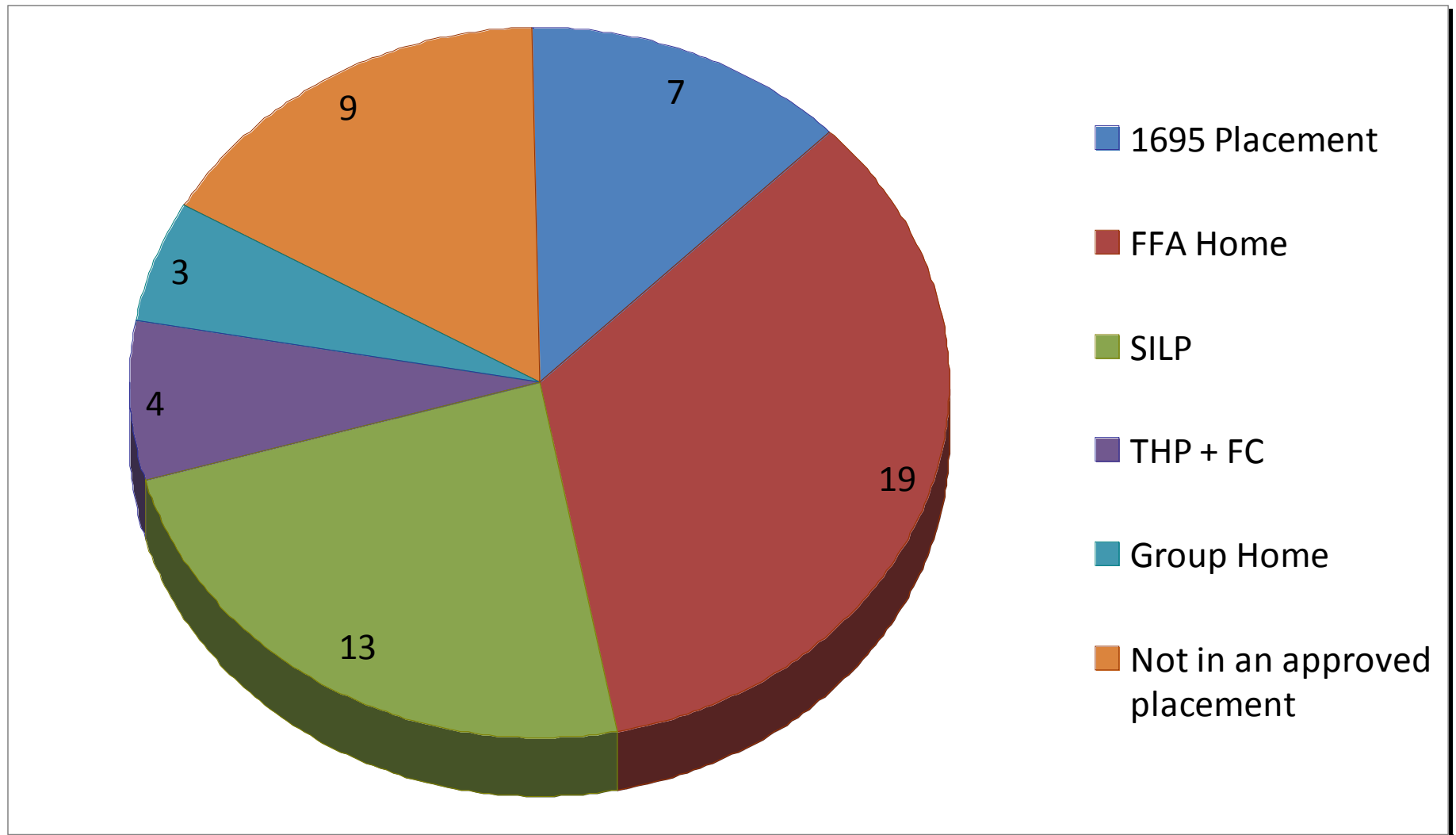
# Participating Conditions 2013



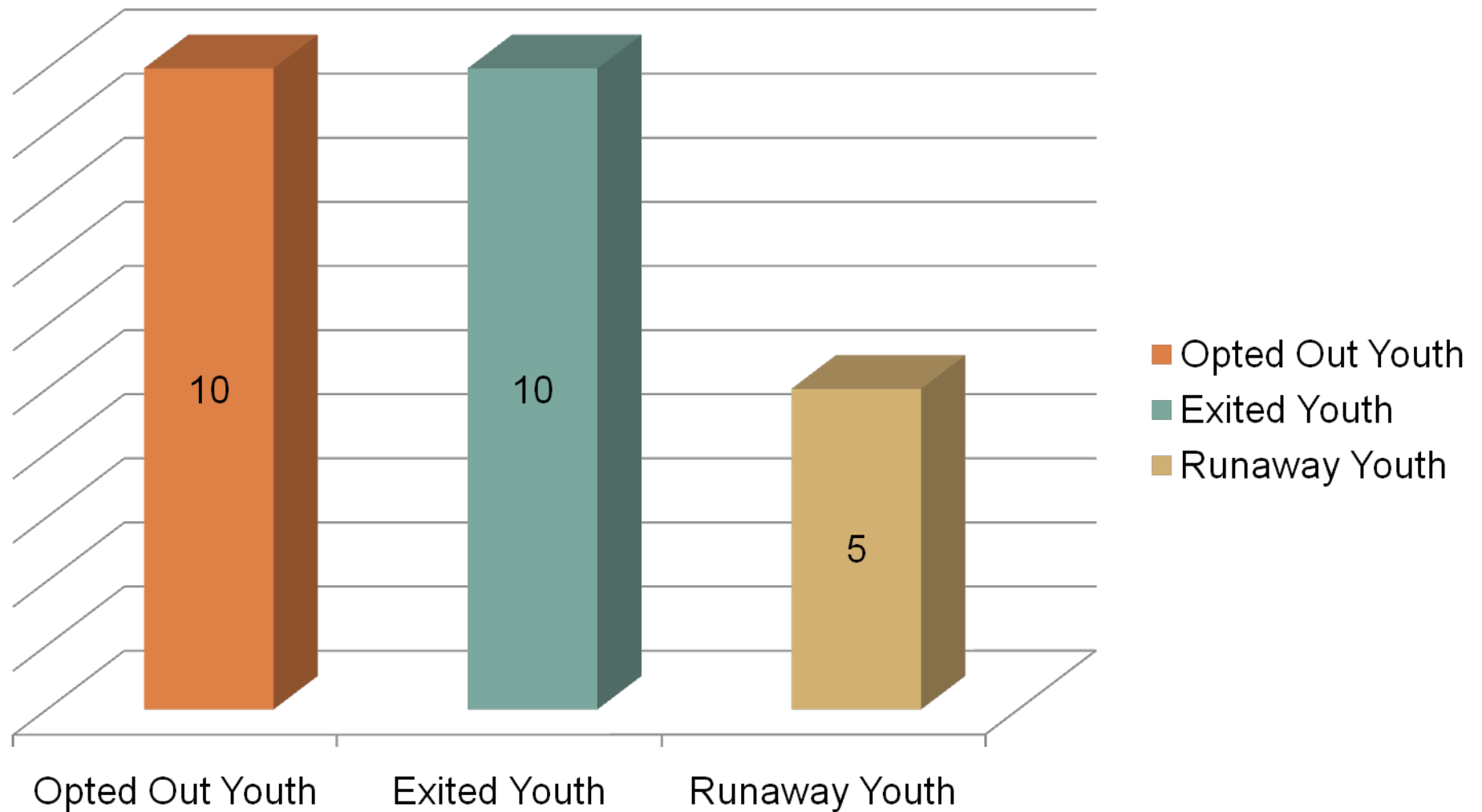
# Placement-Cohort Comparison

|                                    | 2012   |         |  |  |
|------------------------------------|--------|---------|--|--|
| Placement Type                     | Number | Percent |  |  |
| FFA                                | 11     | 19.3%   |  |  |
| FH                                 | 2      | 3.5%    |  |  |
| GH                                 | 2      | 3.5%    |  |  |
| RH                                 | 5      | 8.8%    |  |  |
| Guard. Hm.                         | 2      | 3.5%    |  |  |
| SILP                               | 7      | 19.3%-  |  |  |
| Placement – in process of approval | 12     | --      |  |  |
|                                    | --     |         |  |  |

# Placements of Participating Youth 2013



# Youth Not Receiving After 18 Services 2013



# Program Re-Entry 2013

- We have currently had only one re-entry to date. She lives out-of-state with relatives.

\*There is no After 18 Program in this particular state.

# Program Successes



- ❑ Youth are opting in for After 18 Program services – 87-90% opting in.
- ❑ 36 of 55 obtained their High School Diploma
- ❑ 13 living independently in a SILP
- ❑ Teamwork of the program staff and Youth
- ❑ THP+FC placement has been an excellent resource
- ❑ Participation in Promise Scholar's Program through California State University, Stanislaus

# Youth's Voices



- “I honestly think that I wouldn’t graduate without AB12. I probably be back on the streets. Knowing that I have all these people around me who can see where I’ve been and where I am going.”
- “The start up cost helped immensely in moving into an apartment.”
- “I wished the financial support was paid on the 1st of the month, as opposed to the 5<sup>th</sup> of the month.”
- “The social worker’s support helped me transition well into the supervised independent living placement.”

# Program Challenges



- ❑ Delayed youth that do not qualify for SSI/Regional Center
- ❑ Workload
- ❑ Intense and multiple needs of youth
- ❑ Placement for youth with criminal backgrounds and severe mental health
- ❑ Out of state youth
- ❑ Single parent youth
- ❑ Self medicating youth



# Future Program Plans

- Meadow Glen Housing (Opening Soon)  
additional housing resource – a partnership with Housing Authority, City of Modesto, CSA and other providers
- Youth surveys to improve program
- Foster Youth Center
- Community outreach projects



# Future Program Plans

- After 18 Celebration scheduled for October 4<sup>th</sup>, 2013.
  - \* Youth to provide feedback
  - \* Celebrate success
  - \* Identify improvements



# Program Brochure

## OUR VISION

Every youth reach their goal of independence and becomes a productive member society



## OUR MISSION

We strive to fully prepare youth for transition to responsible adulthood and self sufficiency  
We do this by:

- Building relationships with youth that are nurturing and supportive.
- Listening to their voices
- Encouraging them to develop their potentials
- Providing resources (education, work experience, training)
- Teaching them life skills
- Providing advocacy
- Developing a support system that is nurturing and safe

## PROGRAM GOALS



1. Increase high school completion rate.
2. Improve access to post secondary education.
3. Stabilized housing opportunity
4. Improve life skills of After 18 Program youth to fully prepare them for responsible adulthood and self-sufficiency.
5. Provide support and access to services

Sponsored by the Stanislaus County Board of Supervisors

Stanislaus County  
Community Services Agency



## Contact Information

Stanislaus County  
Community Services Agency  
After 18 Program

251 E. Hackett Rd.  
Modesto, CA 95353  
(209) 558-2500  
[www.Stanworks.com](http://www.Stanworks.com)

Hours:  
Monday thru Friday  
8:00 a.m. – 5:00 p.m.

# After 18 Program

Extended Foster Care  
Ages 18-21



"LIKE" us on Facebook!  
[facebook.com/StanCountyAfter18](https://facebook.com/StanCountyAfter18)

# Program Brochure

## After 18 Program

*The California Fostering Connections to Success Act provides continued services and support for foster youth as they transition out of care. After 18 program is intended to more fully prepare youth for the transition to adulthood and self sufficiency rather than serve as an extension of traditional foster care.* ★

*As a community, we have a historic and special opportunity to work and partner with these young adults in ways that positively affect their future, their happiness and success in life.*



## Participation Conditions

*\*Must meet one condition to be eligible for After 18 Program Services.*

- Completing high school or program equivalent (GED) **or**
- Enrolled in college, community college, or vocational education program **or** ★
- Participating in a program designed to remove barriers to employment **or**
- Employed at least 80 hours a month **or**
- Unable to do one of the above requirements because of a medical condition that is verified and must live in an approved placement.

## HOW CAN YOU MAKE A DIFFERENCE?

- ADVOCACY
- HOUSING
- FUNDING
- INTERNSHIPS
- MENTORING
- TUTORING
- JOB SHADOWING
- WORKSHOPS
- RESOURCES

*For more information, please call (209)558-3627*

**"We believe every young adult is fully VALUED!"** ★

**V**OICES OF YOUNG ADULTS  
The voices of young adults really matter.

**A**SSISTANCE & PARTNERING  
Young people often need active assistance – and real partnerships to reinforce and support learning as they transition into adulthood.

**L**OVE & BELONGING  
Everyone needs someone.

**U**NIQUE NEEDS  
Every young adult is unique.

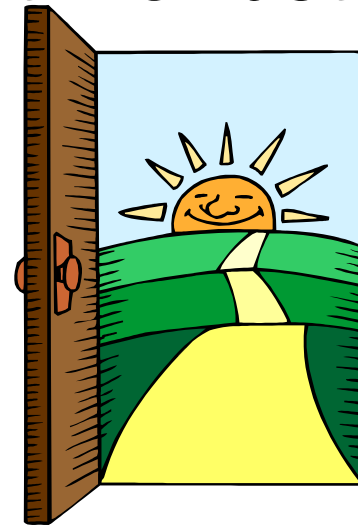
**E**LIGIBILITY  
Young adults should have access to every available service.

**D**EVELOPMENT  
Challenges, pitfalls and experimentation are part of the process of becoming an adult.



# What's NEXT???

- The journey continues. Every youth counts.
- Whatever it takes to help them and support them to lead them to the right direction.
- Working together with the youth for better outcomes.



# The Journey is the Destination

***“The important thing is not to be bitter over life’s disappointments. Learn to let go of it and recognize that every day won’t be sunny, and when you find yourself lost in the darkness and despair, remember it’s only in the black of the night you see the stars. And these stars will lead you back home. So don’t be afraid to make mistakes, to stumble, to fall, cause most of the time, the greatest rewards come from things that scare you the most. Maybe you’ll get everything you wish for. Maybe you’ll get more than you could have imagined. Who knows where life will take you. The road is long and in the end, the journey is the destination.”***

**Whitey Durham, One Tree Hill**



# Any Questions?

---



Like us on  
**Facebook**

[Facebook.com/StanCountyAfter18](https://www.facebook.com/StanCountyAfter18)