



CSDA presents:

Child Support

Every Child Deserves the
Support of Both Parents

Welcome!



**Natalie
Dillon**

Director

Yolo County Child
Support



**Phyllis P.
Nance**

Director

Alameda County Child
Support

Training Goal

Provide an overview of the Child Support Program so that we can work together more effectively to serve our shared customers and make a difference for families in need.



Our Programs Share a Common Goal

Our mission is to serve our community, families, and children.

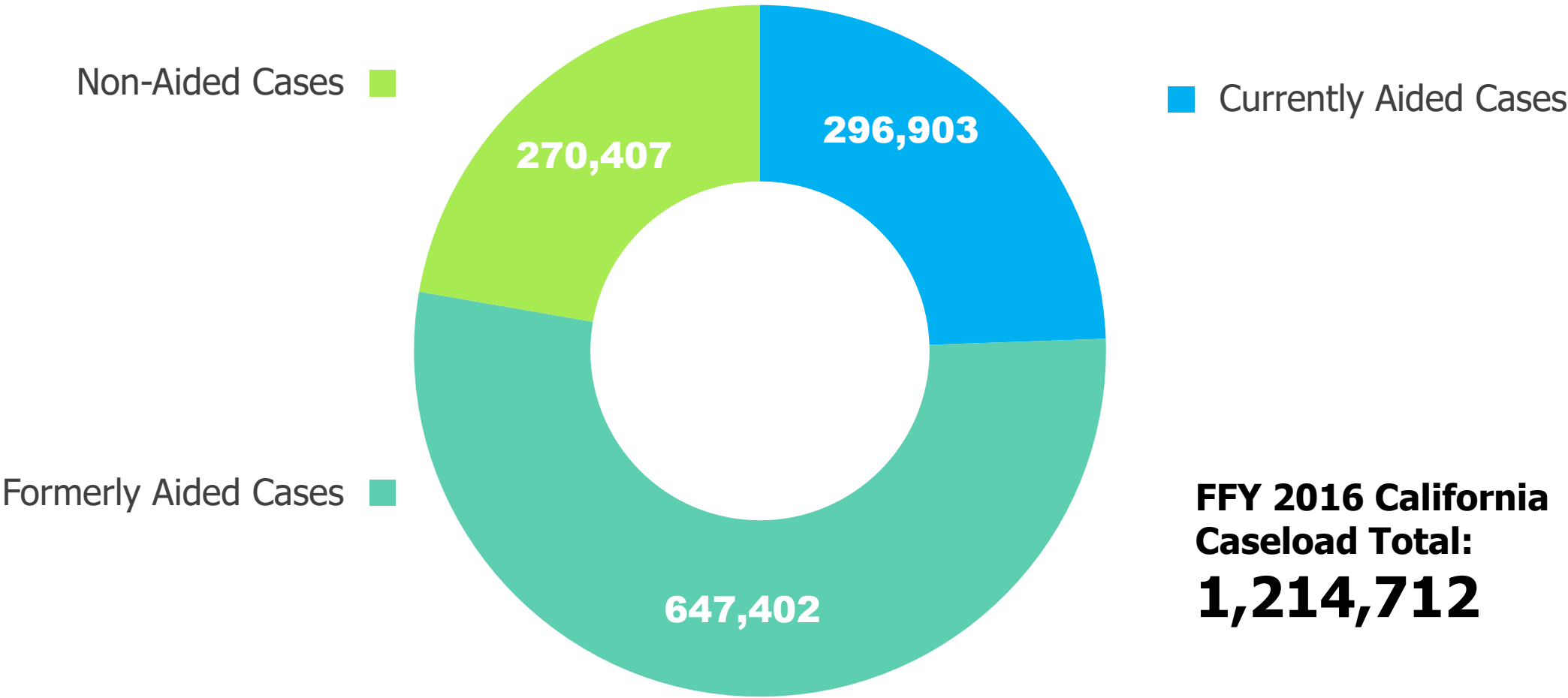


The Child Support Brand

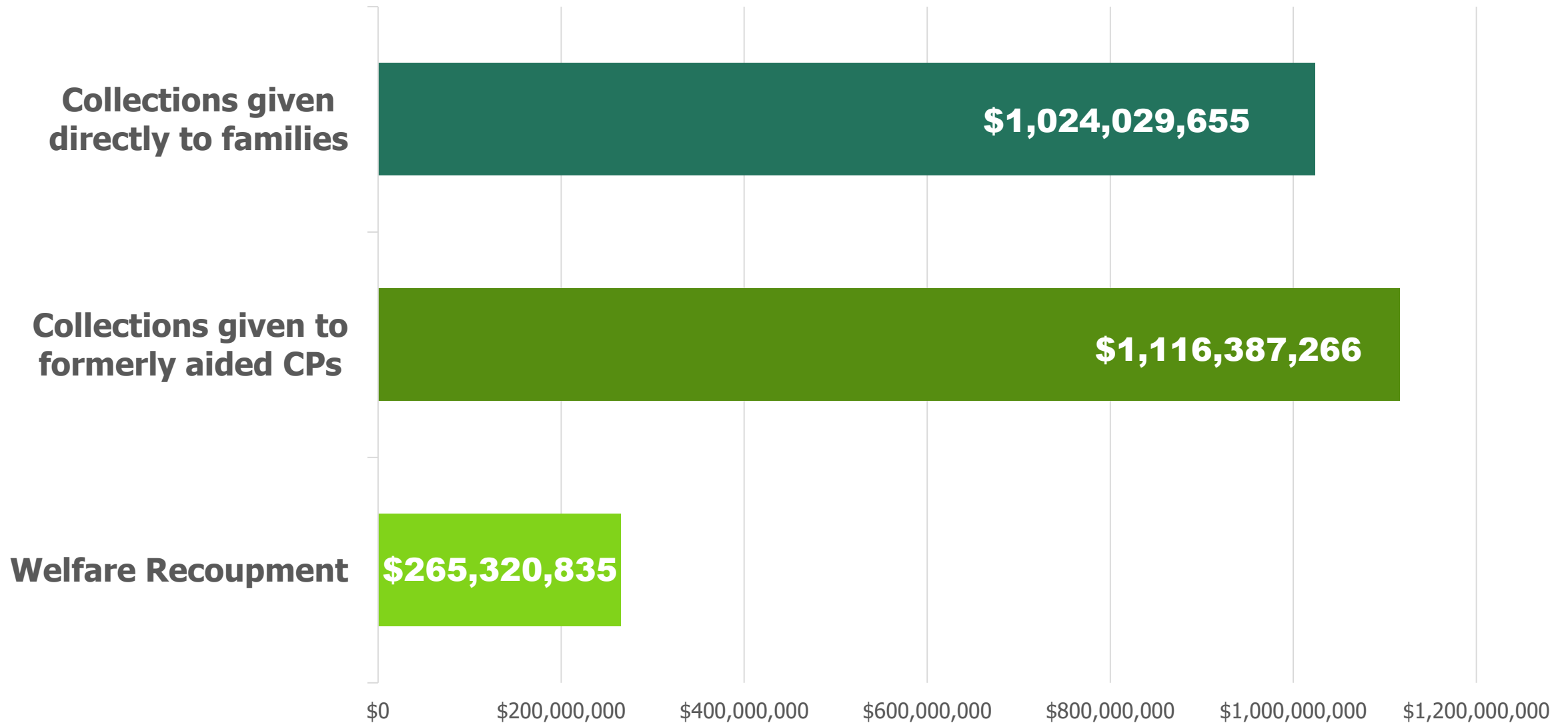
Who *were* we?

Who *are* we?

Who does Child Support Serve?



Money for Families





What is Child Support?



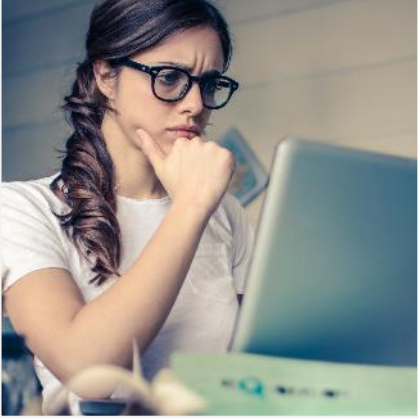
Child Support is defined by law as the ongoing monetary expenditures and payments necessary to cover a child's living and medical expenses.

Both parents have a legal duty to provide financial support for their children.

The court may order either or both parents to pay child support. Child support may include:

- Monetary support
- Health insurance coverage
- Arrearages
- Interest on delinquent child support obligations

What services does Child Support provide?



Locate

We can locate noncustodial parents (NCPs) and assets



Establishment

We can help establish orders for paternity, child support and medical support



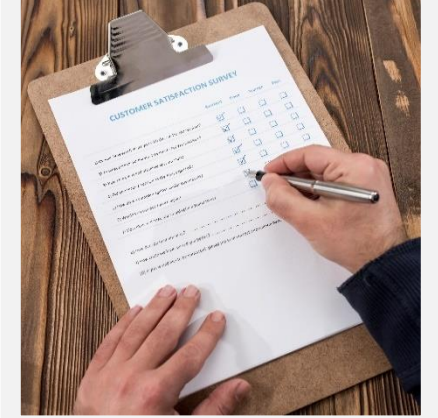
Enforcement

We can enforce orders for child and spousal support and health insurance



Accounting

We keep detailed records of child support transactions



Modification

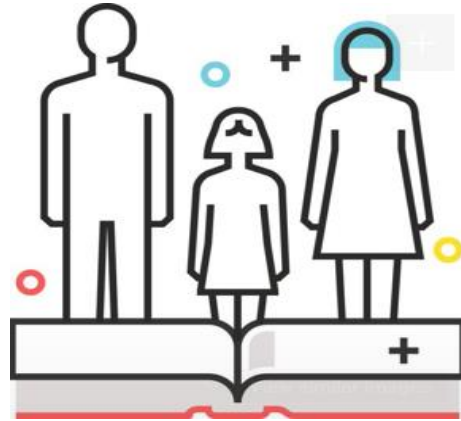
We can help to modify the terms of existing support orders

What we don't do...

Services that Child Support is unable to provide include:



Divorce



Custody/Visitation



Restraining Orders



Establish Spousal
Support

Two Types of Child Support Cases

Non-Aided Case

- Services Requested
 - Annual fee may be charged
 - Either parent can apply

Aided Case

- Services Required
 - Custodial Party (CP) must assign support rights (CW 2.1)
 - CP must cooperate with Child Support
 - No annual fee
 - \$50 disregard payment
 - DCSS will continue to collect child support post-public assistance
 - DCSS will continue to collect on arrears accrued during the aid period
 - CP can request in writing that DCSS stop collections on behalf of their non-aid child support and arrears.

Non-Aided Applications

This includes parents who receive Medi-CAL, CalFresh, General Assistance, WIOA, etc.



Online

VIOLA at the state child support website



By Mail

Request an application by telephone



In Person

Visit any local child support office



Aided cases: referrals to child support

How does child support receive referrals from the CWD?

- The IV-A system automatically transmits electronic referrals to DCSS for children receiving CalWORKs, KinGap, or Foster Care assistance
- DCSS refers to the electronic referral as a Service Request (SR)
- SRs are processed in the IV-D CSE system to create a child support case

The Support Questionnaire

STATE OF CALIFORNIA - HEALTH AND HUMAN SERVICES AGENCY

CALIFORNIA DEPARTMENT OF SOCIAL SERVICES

SUPPORT QUESTIONNAIRE

INSTRUCTIONS:

You must answer **ALL** questions.

COMPLETE ONE FORM FOR EACH
NONCUSTODIAL PARENT OR EACH UNMARRIED
FATHER IN THE HOME.

Use ink. Print answer. Check Yes, No, or Unknown.

Use a separate piece of paper if you need more room.

FOR COUNTY USE ONLY

CWD CASE NAME	LCSA CASE NAME
CWD CASE NUMBER	LCSA CASE NUMBER
CWD WORKER NAME/NO.	LCSA WORKER NAME/NO.
TELEPHONE NUMBER ()	TELEPHONE NUMBER ()


SECTION 1 - COMPLETE THE FOLLOWING ABOUT YOURSELF

NAME (FIRST, MIDDLE, LAST)		MAIDEN NAME	
HOME ADDRESS (STREET NUMBER AND NAME, APARTMENT NUMBER, IF ANY)		CITY	STATE ZIP
SOCIAL SECURITY NUMBER (SSN)		BIRTHDATE	BIRTH PLACE
YOUR RELATIONSHIP TO CHILDREN		YOUR RELATIONSHIP TO NONCUSTODIAL PARENT/UNMARRIED FATHER IN THE HOME	
		<input type="checkbox"/> Spouse <input type="checkbox"/> Ex-Spouse <input type="checkbox"/> Friend <input type="checkbox"/> Other	

SECTION 2 - COMPLETE THE FOLLOWING ABOUT THE NONCUSTODIAL PARENT OR UNMARRIED FATHER IN THE HOME

A. NAME (FIRST, MIDDLE, LAST)		SOCIAL SECURITY NUMBER (SSN)		<input type="checkbox"/> MALE <input type="checkbox"/> FEMALE	
LAST KNOWN ADDRESS (STREET NUMBER AND NAME, APARTMENT NUMBER, IF ANY)		CITY	STATE	ZIP	
WHEN WAS THIS ADDRESS CURRENT?	TELEPHONE NUMBER ()	WHEN DID YOU LAST HEAR FROM OR GET MAIL FROM THIS PARENT?		Does this parent live with you? <input type="checkbox"/> Yes <input type="checkbox"/> No	
BIRTHDATE	BIRTH PLACE	HEIGHT	WEIGHT	EYE COLOR	HAIR COLOR
SCARS, BIRTHMARKS, TATTOOS, NICKNAMES, ETC.					





When a Good Cause claim is received by DCSS via the IV-A transaction, the CSE system takes the following actions based on the status of the claim:

Status: Good Cause Claimed

The child support case will remain open until the final determination has been made by IV-A, although all enforcement actions stop

Status: Good Cause Granted

The child support case will be automatically closed by the CSE system

Status: Good Cause Denied

The child support case remains open and enforcement actions resume

Good Cause

The IV-A agency determines good cause

Paternity Establishment

How does DCSS determine paternity?

Marital Presumption

- The child was conceived within the marriage dates or born within 300 days of the date of legal separation

Paternity Acknowledged

- The parents completed a paternity acknowledgement from through the Paternity Opportunity Program (POP)

Paternity Adjudicated

- Paternity is established by court order.





What is POP?

The Paternity Opportunity Program can help establish parentage without going to court

- POP provides unmarried mothers and biological fathers the opportunity to ***voluntarily*** establish legal paternity for their child by signing a Declaration of Paternity (CS 909 form)
- A filed Declaration of Paternity has the ***same legal force and effect*** as a judgment of paternity entered by a court.

A photograph of a man and a young girl in a grassy field. The man, on the left, is wearing a blue polo shirt and jeans, standing with his hands on his hips and looking down. The girl, on the right, is wearing a striped dress and jeans, holding a red toy airplane. In the background, there is a chain-link fence and a clear blue sky.


The Value of Paternity

- Simple program/form
- Public assistance
- Father's name on birth certificate
- Benefits(health, social security)
- Child's passport/travel

Primary Authorized Witnesses

- Hospitals
- County Registrar Offices
- Courts/Family Law Facilitators
- Local Welfare Agencies
- Local Child Support Offices

Paternity Opportunity Program



Who can witness a Declaration of Paternity?

In California, representatives from the agencies below are qualified to witness your Declaration:

Family Law Facilitator of Local Court

Hospital where your baby is born

Local Registrar of Births & Deaths

Notary Public

Local Child Support Agency

Local Welfare Office

When signing the Declaration outside the state of California, a notary public* is the only qualified witness.

**A notary public may charge a fee for services.*


A Declaration of Paternity must be completed, signed by both parents with signatures properly witnessed, and filed with the California Department of Child Support Services before legal paternity is established.

To find out more about establishing paternity:

- Call toll-free 1-866-248-0773
- E-mail askpop@dcss.ca.gov
- Click on the POP link at www.childsup.ca.gov

California Department of Child Support Services
Paternity Opportunity Program (POP)
DCSS POP, P.O. Box 419070, Rancho Cordova, CA 95741-9070

POP01 (08/1)



PATERNITY OPPORTUNITY PROGRAM





Authorized Witness

A key participant in the POP process

The Role of the Authorized Witnesses

- Provide POP information
- Witness signatures
- Review declarations for accuracy
- Submit completed declarations to POP



How much?

Courts and child support agencies use the State Guideline Calculator to calculate child support

Factors that affect child support include:

- Income of the parents
- Visitation
- Other child support orders
- Other biological children in the home
- Daycare or health care expenses
- Mandatory income deductions

A photograph of a man and a young child. The man, in the background, is smiling broadly and wearing a red shirt with the number '6' on it. The child, in the foreground, is laughing with their mouth open, wearing a light blue patterned shirt. The background is a soft-focus outdoor scene with green foliage.

Enforcement

Child support employs a number of tools to collect child support

- Income Withholding Order (IWO)
- Order to provide Medical Support/Health Insurance
- Credit Reporting
- Real Property Liens
- License Suspension/Revocation
- Passport Denial
- Unemployment & Disability Insurance Benefit Intercept
- Franchise Tax Board (FTB) and IRS Refund Intercepts
- Bank Levies

The IV-A/IV-D Handshake

- Provide DCSS with as much information as possible
- Pairing IV-A Member IDs with IV-D Participant IDs
- NCP whereabouts, earnings, assets
- Paternity information
- Foster care cases and possible reunification



Better Together

We can work together to better serve families



Child Support is Part of the Poverty Solution

- Collections - 40% of Household income for families who receive child support
- Improved child outcomes when both parents are involved, including:
 - Reduced teen pregnancy
 - Reduced interaction with criminal justice
 - Increased high school graduation rates



Every child deserves the support of both parents

We are in this together!