

20 YEARS OF IMPACT



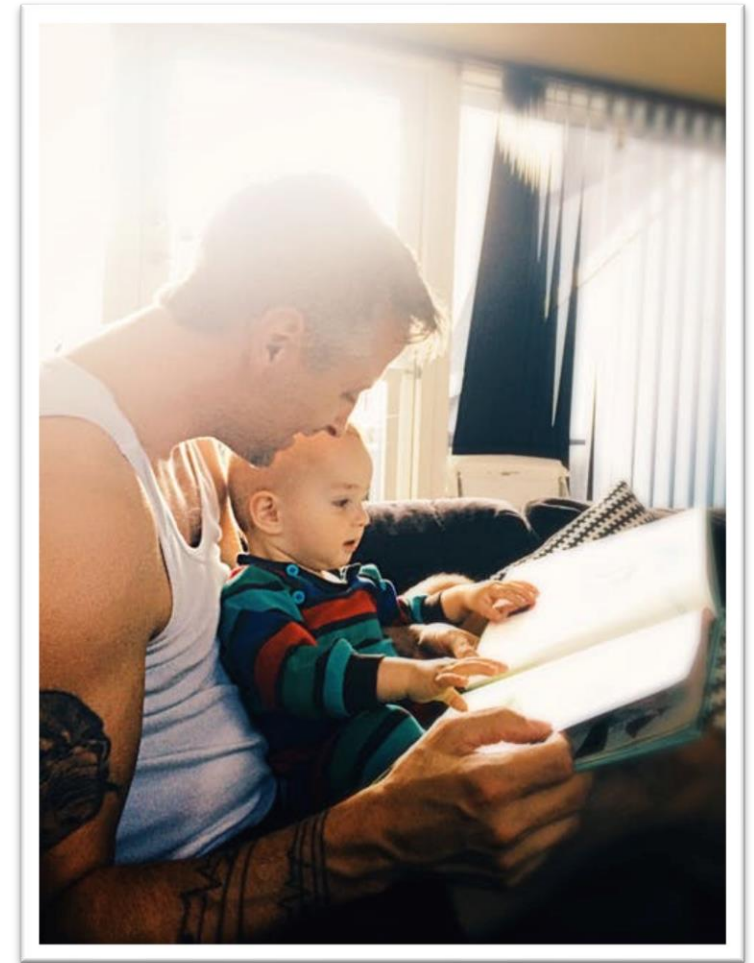
# BIRTH & BEYOND FEATURES

- Strong Evaluation Outcomes
- Family Resource Centers
- Diverse Funding - Flexibility
- AmeriCorps
- Collective Impact Model
- Evidence Based Practices: NPP, HFA, FRCs, CWC Prevention Framework

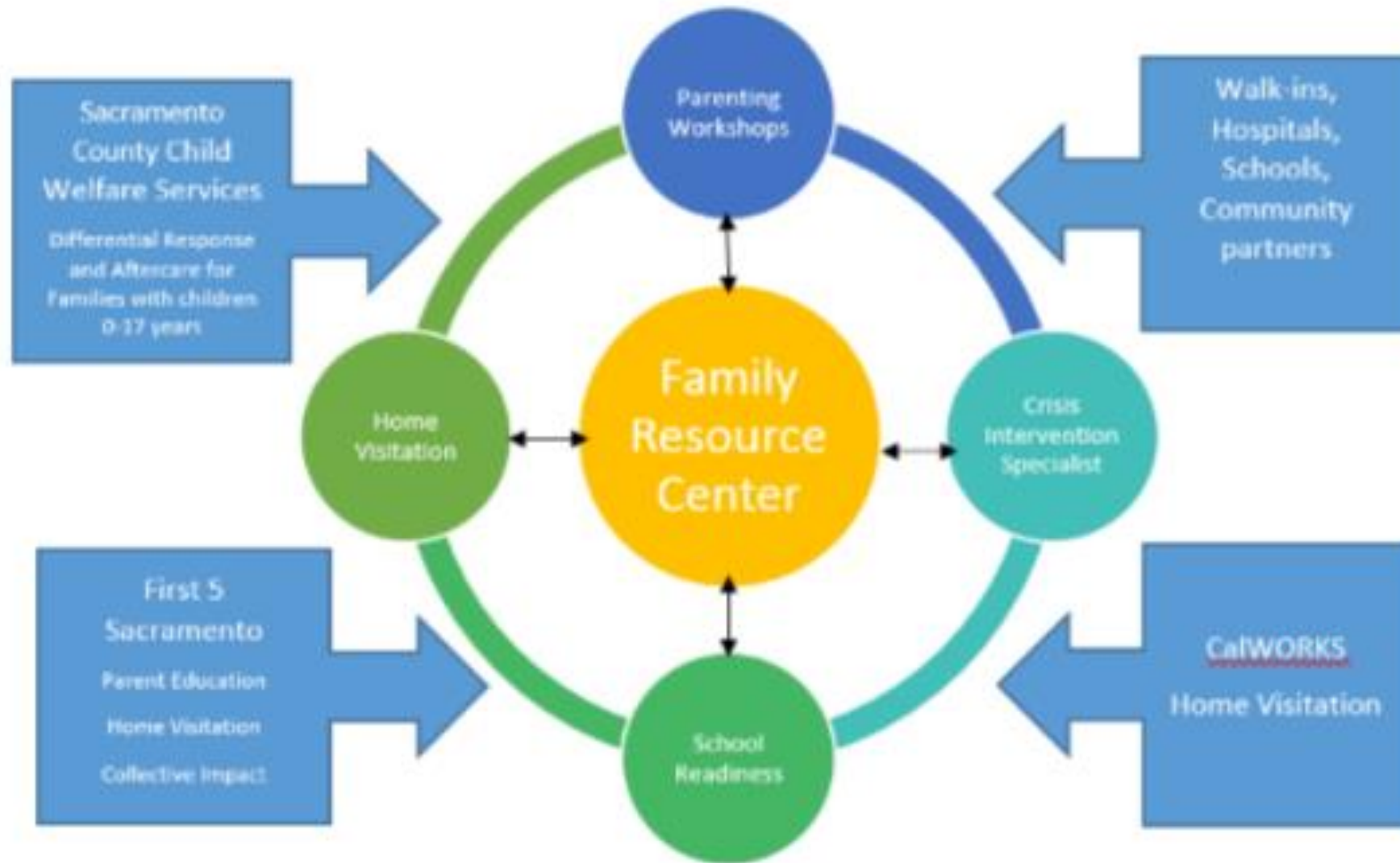


# MODEL

- 9 Sites
- Home Visitation
- Family Resource Centers
- Parent Education
- Crisis Intervention
- School Readiness
- Multi-Disciplinary Team
- Prevention, Early Intervention, After care
- Resource Services (core needs, health care/insurance, access to public assistance, immigration support, transportation, social, nutrition, mental health, domestic violence, etc)



# Birth & Beyond



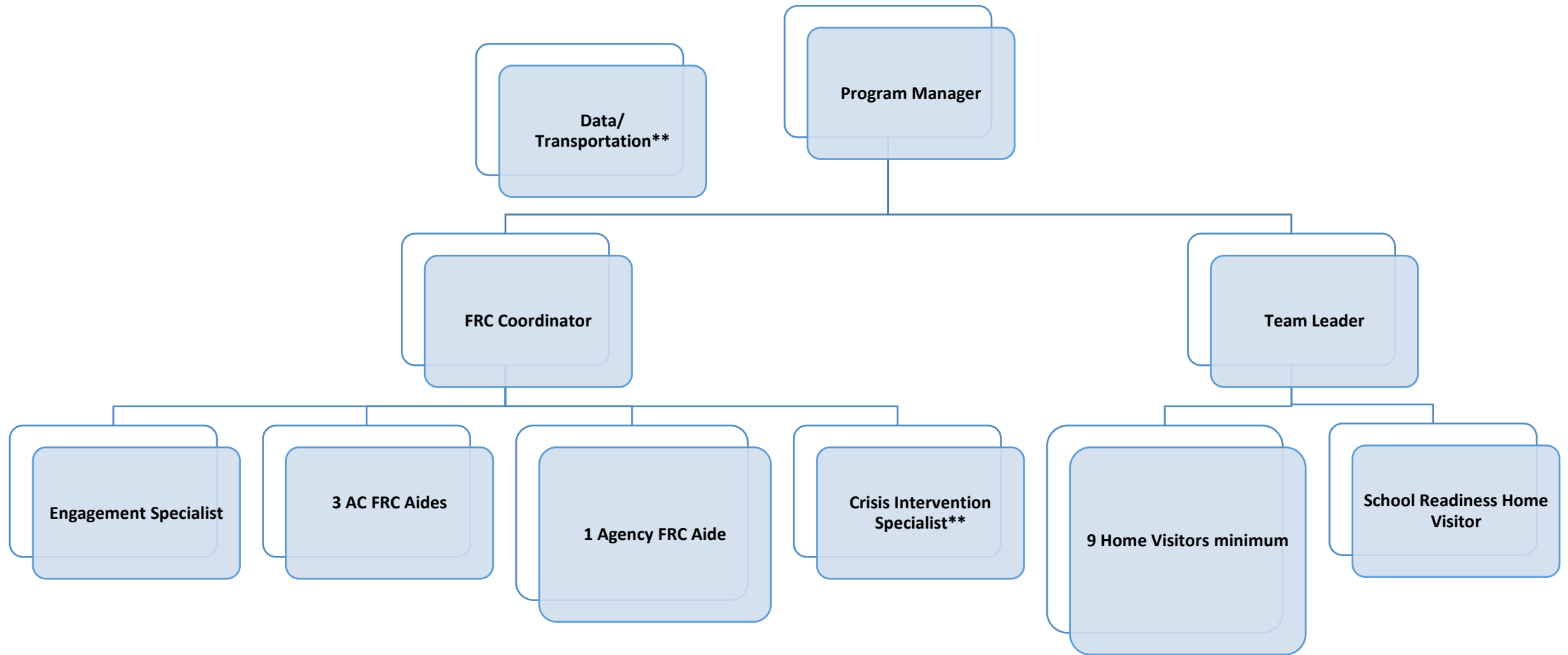


A group of diverse children and a man are gathered in a room with colorful, cartoon-themed wall decorations. The children are of various ages and ethnicities, some pointing towards the camera. The man is standing behind them, partially visible. The overall atmosphere is bright and cheerful.

# FRC Services

- Safe Sleep Baby Education
- Shaken Baby Prevention
- Mental Health Services
- Car Seat Classes
- Women's Health Clinics
- Employment Centers
- Mommy and Me
- Dad's Groups
- Women's Groups
- Grandparents Support
- After School Programming
- Cribs
- Services to Youth
- Legal Aid
- Nutrition
- Playcare
- Access to Health Care
- Parent Leadership
- Access to public assistance
- Transportation
- Parent Support Line
- Substance Use Referrals
- Community Events
- Farmer's Markets
- Homework Help
- Bullying Prevention
- Domestic Violence Prevention & Services
- Immigration Services
- Exercise classes
- Social events

# SITE ORGANIZATION



# Quasi-experimental Evaluation

- **Compares HV parents** (n=496) with previous CPS history to non-HV parents (n=985) with similar CPS history
- **Controls for bias** that some individuals are more willing/likely to participate in HV program
- **Accounts for rolling program entries and exits**
- **Holds all demographic factors constant** to compare CPS recidivism over time
- Quasi-experimental study includes all HV parents, with CPS history, who were served by AC member over 3 years
- Impact evaluation allows for the direct attribution of positive changes to HV program (i.e., provides 'higher-level of evidence' of program effectiveness)

# Quasi-experimental Evaluation

- All parents participating in HV were **29% less likely to have a substantiated referral** over a four-year period than non-HV parents.
- Parents with 25-34 hours of HV were **63% less likely to have a substantiated referral** over a four-year period than non-HV parents.
- Parents with at least 8 hours of HV showed an **average decrease in risk/increase in parenting skills** as measured by the AAPI (statistically significant at  $p < 0.01$ )



# Bottom Line

Families served by Birth & Beyond  
Home Visitors are 173% less likely  
to enter child welfare than the  
comparison group.

# GENERAL FINDINGS

- Reduced risk of child abuse and neglect
- Increased immunizations
- Breastfeeding initiation and duration
- Improved health access and screenings
- Enhanced child development
- Improved school readiness
- Improved parenting knowledge and skills
- Environmental home safety
- Employment readiness
- Prenatal care received
- **Outcomes are best for parents with both home visitation and FRC support**

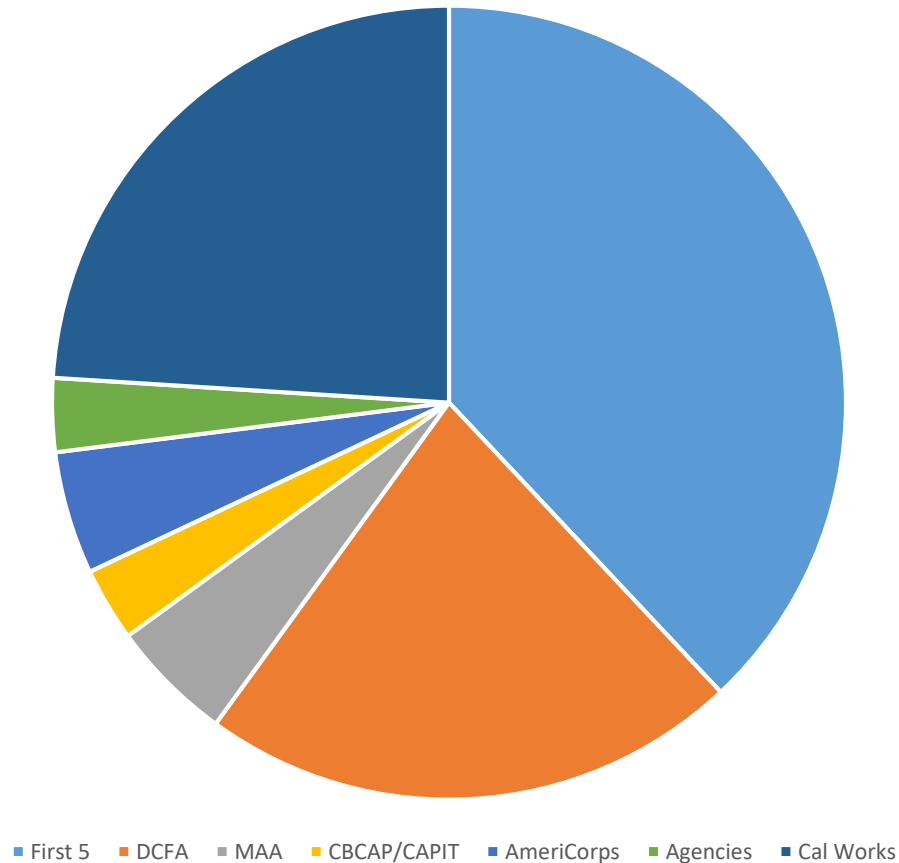


# WHY LOCATE HOME VISITORS IN FAMILY RESOURCE CENTERS

- TRUST IN THE COMMUNITY
- CONTINUATION OF SERVICES AFTER HOME VISITATION ENDS
- KNOWN RESOURCE IF FUTURE NEEDS/CRISES OCCUR
- GREATER ARRAY/LINKS TO SERVICES
- DECREASED ISOLATION-INCREASED CONNECTIONS
- LONGER DURATION OF SUCCESSFUL OUTCOMES



# DIVERSE FUNDING- CONTINUUM OF CARE



- CalWORKS: First time CalWORKS eligible moms with child under 24 months
- First 5: Families with at least one child under 5 years, may be multiple children
- DCFA: Families with child 6 years and older

First 5	38%
DCFA	22%
MAA	5%
CBCAP/CAPIT	3%
AmeriCorps	5%
Agencies	3%
Cal Works	24%

# WHY AMERICORPS?

- Funding
- Desire to serve the community – not just a job
- Utilize neighborhood residents
- Reflect the cultural/linguistic makeup of the community
- Remain community assets
- Remain in the field
- Continuing education/professionalism
- Recruitment of home visitors – benefits





# COLLECTIVE IMPACT MODEL

- 20 Year Public-Private Collaborative
- Backbone Agency – CAP Center
- One evaluation – transparent data for all partners/funders
- Consistent training
- Consistent policies and procedures
- Beneficiary voice at all levels
- Committee structure
- Collective fund development – non-competitive among partners
- Engagement Specialists shared across sites



# COMMITTEE STRUCTURE

**B&B Management Committee**

**Program Manager Operations Committee (PMOC)**

**Team Leader Meeting**

**FRC Coordination Meeting**

**Cultural Responsiveness  
Subcommittee**

**School Readiness Home Visitor  
Meeting**

**Policy and Procedure Meeting**

**Data Workgroup**

**Intervention Specialists Meeting**

**Parent Cabinet**

**Engagement Specialist  
Workgroup**

# QUESTIONS AND CONTACTS



Sheila Boxley - President & CEO  
The Child Abuse Prevention Center  
[sboxley@thecapcenter.org](mailto:sboxley@thecapcenter.org)



Michelle Callejas, Director  
Sacramento County Department of  
Children, Family, and Adult Services  
[callem@sacounty.net](mailto:callem@sacounty.net)